

Product datasheet for **TA501944BM**

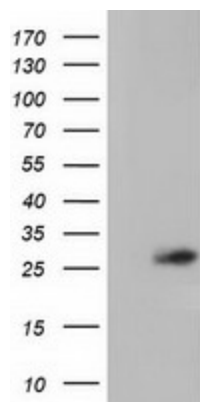
OTUB2 Mouse Monoclonal Antibody (HRP conjugated) [Clone ID: OTI2F6]

Product data:

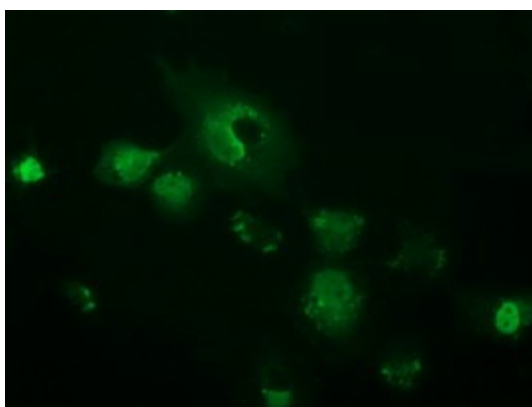
Product Type:	Primary Antibodies
Clone Name:	OTI2F6
Applications:	IF, WB
Recommended Dilution:	WB 1:500~2000, IF 1:100
Reactivity:	Human, Mouse, Rat
Host:	Mouse
Isotype:	IgG1
Clonality:	Monoclonal
Immunogen:	Full length human recombinant protein of human OTUB2 (NP_075601) produced in HEK293T cell.
Formulation:	PBS (pH 7.3) containing 1% BSA, 50% glycerol.
Concentration:	0.5 mg/ml
Purification:	Purified from mouse ascites fluids or tissue culture supernatant by affinity chromatography (protein A/G)
Conjugation:	HRP
Storage:	Store at -20°C as received.
Stability:	Stable for 12 months from date of receipt.
Predicted Protein Size:	27.0 kDa
Gene Name:	OTU deubiquitinase, ubiquitin aldehyde binding 2
Database Link:	NP_075601 Entrez Gene 68149 Mouse Entrez Gene 314405 Rat Entrez Gene 78990 Human Q96DC9
Background:	Otubains are deubiquitylating cysteine proteases (DUBs; see MIM 602519) that belong to the ovarian tumor (OTU) protein superfamily. Like other DUBs, otubains cleave proteins precisely at the ubiquitin (UB; see MIM 191339)-protein bond. [supplied by OMIM]
Synonyms:	C14orf137; OTB2; OTU2
Protein Families:	Protease



[View online »](#)

Product images:

HEK293T cells were transfected with the pCMV6-ENTRY control (Left lane) or pCMV6-ENTRY OTUB2 ([RC209650], Right lane) cDNA for 48 hrs and lysed. Equivalent amounts of cell lysates (5 ug per lane) were separated by SDS-PAGE and immunoblotted with anti-OTUB2. Positive lysates [LY402958] (100ug) and [LC402958] (20ug) can be purchased separately from OriGene.



Anti-OTUB2 mouse monoclonal antibody ([TA501944]) immunofluorescent staining of COS7 cells transiently transfected by pCMV6-ENTRY OTUB2 ([RC209650]).