

Product datasheet for **TA501938S**

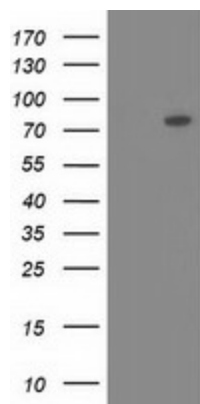
OSBPL11 Mouse Monoclonal Antibody [Clone ID: OTI2F6]

Product data:

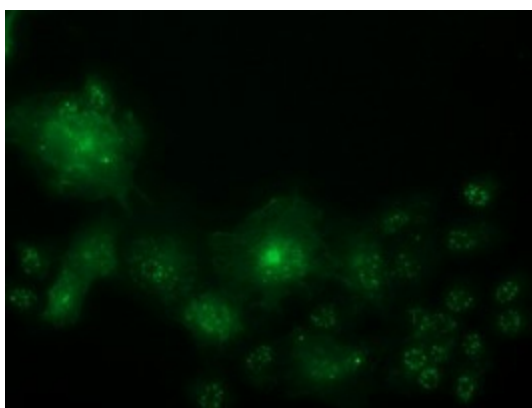
| | |
|-------------------------|--|
| Product Type: | Primary Antibodies |
| Clone Name: | OTI2F6 |
| Applications: | IF, WB |
| Recommended Dilution: | WB 1:2000, IF 1:100 |
| Reactivity: | Human, Mouse, Rat |
| Host: | Mouse |
| Isotype: | IgG1 |
| Clonality: | Monoclonal |
| Immunogen: | Full length human recombinant protein of human OSBPL11 (NP_073613) produced in HEK293T cell. |
| Formulation: | PBS (pH 7.3) containing 1% BSA, 50% glycerol and 0.02% sodium azide. |
| Concentration: | 0.61 mg/ml |
| Purification: | Purified from mouse ascites fluids or tissue culture supernatant by affinity chromatography (protein A/G) |
| Conjugation: | Unconjugated |
| Storage: | Store at -20°C as received. |
| Stability: | Stable for 12 months from date of receipt. |
| Predicted Protein Size: | 83.5 kDa |
| Gene Name: | oxysterol binding protein like 11 |
| Database Link: | NP_073613 Entrez Gene 106326 Mouse Entrez Gene 303888 Rat Entrez Gene 114885 Human Q9BXB4 |
| Background: | This gene encodes a member of the oxysterol-binding protein (OSBP) family, a group of intracellular lipid receptors. Like most members, the encoded protein contains an N-terminal pleckstrin homology domain and a highly conserved C-terminal OSBP-like sterol-binding domain. [provided by RefSeq]. COMPLETENESS: complete on the 3' end. |
| Synonyms: | ORP-11; ORP11; OSBP12; TCCCIA00292 |



[View online »](#)

Product images:

HEK293T cells were transfected with the pCMV6-ENTRY control (Left lane) or pCMV6-ENTRY OSBPL11 ([RC209418], Right lane) cDNA for 48 hrs and lysed. Equivalent amounts of cell lysates (5 ug per lane) were separated by SDS-PAGE and immunoblotted with anti-OSBPL11. Positive lysates [LY411565] (100ug) and [LC411565] (20ug) can be purchased separately from OriGene.



Anti-OSBPL11 mouse monoclonal antibody ([TA501938]) immunofluorescent staining of COS7 cells transiently transfected by pCMV6-ENTRY OSBPL11 ([RC209418]).