

## Product datasheet for **TA501931BM**

### **EPM2AIP1 Mouse Monoclonal Antibody (HRP conjugated) [Clone ID: OTI1F3]**

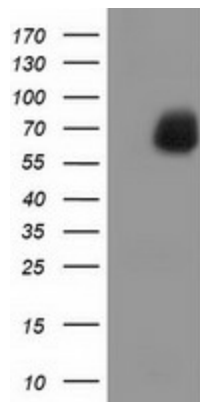
#### **Product data:**

<b>Product Type:</b>	Primary Antibodies
<b>Clone Name:</b>	OTI1F3
<b>Applications:</b>	FC, IF, WB
<b>Recommended Dilution:</b>	WB 1:1000, IF 1:100, FLOW 1:100
<b>Reactivity:</b>	Human, Mouse, Rat
<b>Host:</b>	Mouse
<b>Isotype:</b>	IgG1
<b>Clonality:</b>	Monoclonal
<b>Immunogen:</b>	Full length human recombinant protein of human EPM2AIP1 (NP_055620) produced in HEK293T cell.
<b>Formulation:</b>	PBS (pH 7.3) containing 1% BSA, 50% glycerol.
<b>Concentration:</b>	0.5 mg/ml
<b>Purification:</b>	Purified from mouse ascites fluids or tissue culture supernatant by affinity chromatography (protein A/G)
<b>Conjugation:</b>	HRP
<b>Storage:</b>	Store at -20°C as received.
<b>Stability:</b>	Stable for 12 months from date of receipt.
<b>Predicted Protein Size:</b>	70.2 kDa
<b>Gene Name:</b>	EPM2A interacting protein 1
<b>Database Link:</b>	<a href="#">NP_055620</a> <a href="#">Entrez Gene 77781 Mouse</a> <a href="#">Entrez Gene 316021 Rat</a> <a href="#">Entrez Gene 9852 Human</a> <a href="#">Q7L775</a>
<b>Background:</b>	The EPM2A gene, which encodes laforin, is mutated in an autosomal recessive form of adolescent progressive myoclonus epilepsy. The protein encoded by this gene binds to laforin, but its function is not known. This gene is intronless. [provided by RefSeq]. COMPLETENESS: complete on the 3' end.
<b>Synonyms:</b>	FLJ11207; KIAA0766

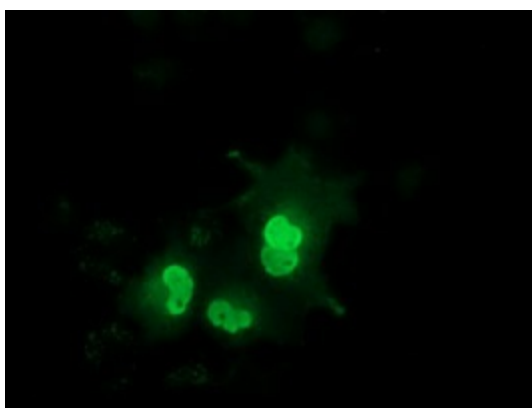


[View online »](#)

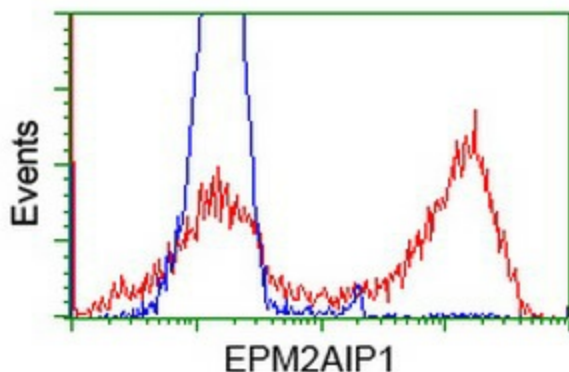
## Product images:



HEK293T cells were transfected with the pCMV6-ENTRY control (Left lane) or pCMV6-ENTRY EPM2AIP1 ([RC209239], Right lane) cDNA for 48 hrs and lysed. Equivalent amounts of cell lysates (5 ug per lane) were separated by SDS-PAGE and immunoblotted with anti-EPM2AIP1. Positive lysates [LY415014] (100ug) and [LC415014] (20ug) can be purchased separately from OriGene.



Anti-EPM2AIP1 mouse monoclonal antibody ([TA501931]) immunofluorescent staining of COS7 cells transiently transfected by pCMV6-ENTRY EPM2AIP1 ([RC209239]).



HEK293T cells transfected with either [RC209239] overexpress plasmid (Red) or empty vector control plasmid (Blue) were immunostained by anti-EPM2AIP1 antibody ([TA501931]), and then analyzed by flow cytometry.