

Product datasheet for **TA501900S**

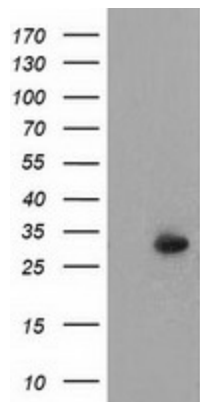
PYCR2 Mouse Monoclonal Antibody [Clone ID: OTI2A12]

Product data:

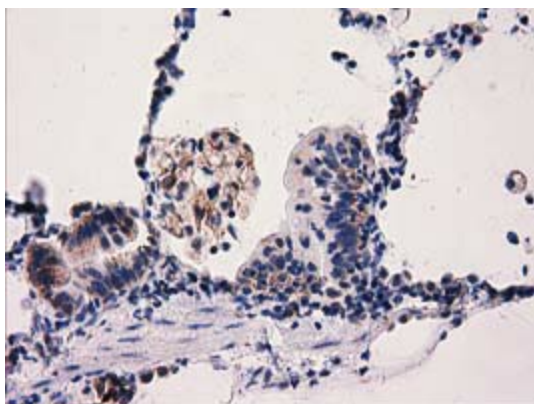
Product Type:	Primary Antibodies
Clone Name:	OTI2A12
Applications:	IF, IHC, WB
Recommended Dilution:	WB 1:2000, IHC 1:150, IF 1:100
Reactivity:	Human, Mouse, Rat
Host:	Mouse
Isotype:	IgG1
Clonality:	Monoclonal
Immunogen:	Full length human recombinant protein of human PYCR2 (NP_037460) produced in HEK293T cell.
Formulation:	PBS (pH 7.3) containing 1% BSA, 50% glycerol and 0.02% sodium azide.
Concentration:	0.86 mg/ml
Purification:	Purified from mouse ascites fluids or tissue culture supernatant by affinity chromatography (protein A/G)
Conjugation:	Unconjugated
Storage:	Store at -20°C as received.
Stability:	Stable for 12 months from date of receipt.
Predicted Protein Size:	33.5 kDa
Gene Name:	pyrroline-5-carboxylate reductase 2
Database Link:	NP_037460 Entrez Gene 69051 Mouse Entrez Gene 364064 Rat Entrez Gene 29920 Human Q96C36
Synonyms:	HLD10; P5CR2
Protein Pathways:	Arginine and proline metabolism, Metabolic pathways



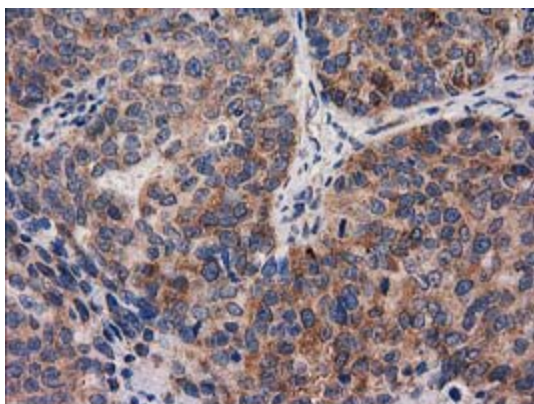
[View online »](#)

Product images:

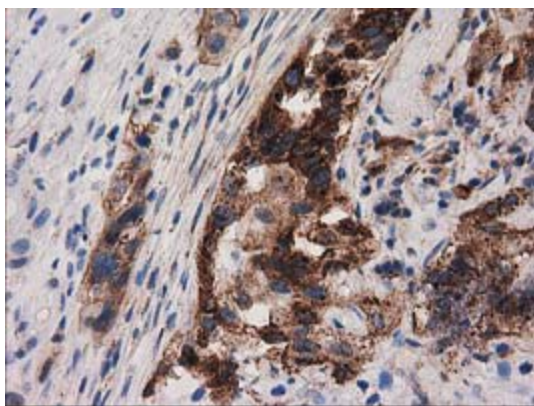
HEK293T cells were transfected with the pCMV6-ENTRY control (Left lane) or pCMV6-ENTRY PYCR2 ([RC204525], Right lane) cDNA for 48 hrs and lysed. Equivalent amounts of cell lysates (5 ug per lane) were separated by SDS-PAGE and immunoblotted with anti-PYCR2. Positive lysates [LY402246] (100ug) and [LC402246] (20ug) can be purchased separately from OriGene.



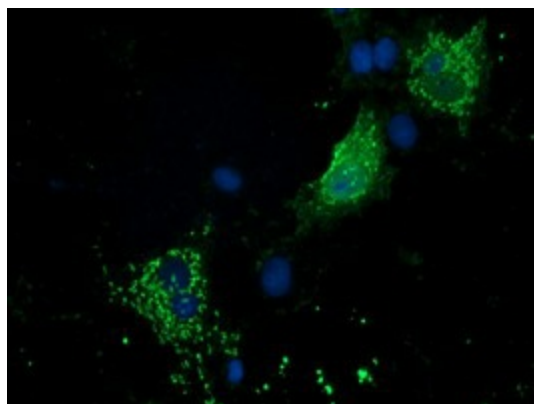
Immunohistochemical staining of paraffin-embedded Carcinoma of Human lung tissue using anti-PYCR2 mouse monoclonal antibody. (Heat-induced epitope retrieval by 10mM citric buffer, pH6.0, 100°C for 10min, [TA501900])



Immunohistochemical staining of paraffin-embedded Adenocarcinoma of Human ovary tissue using anti-PYCR2 mouse monoclonal antibody. (Heat-induced epitope retrieval by 10mM citric buffer, pH6.0, 100°C for 10min, [TA501900])



Immunohistochemical staining of paraffin-embedded Carcinoma of Human bladder tissue using anti-PYCR2 mouse monoclonal antibody. (Heat-induced epitope retrieval by 10mM citric buffer, pH6.0, 100°C for 10min, [TA501900])



Anti-PYCR2 mouse monoclonal antibody ([TA501900]) immunofluorescent staining of COS7 cells transiently transfected by pCMV6-ENTRY PYCR2 ([RC204525]).