

Product datasheet for **TA501891AM**

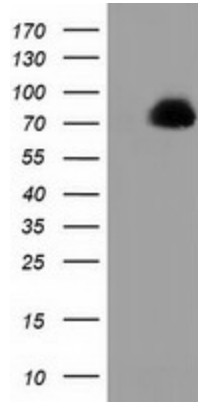
PPWD1 Mouse Monoclonal Antibody (Biotin conjugated) [Clone ID: OTI1B2]

Product data:

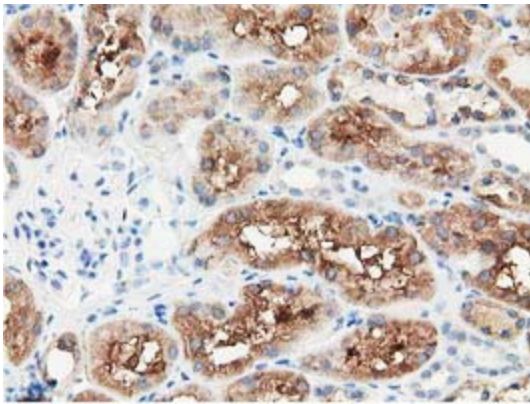
Product Type:	Primary Antibodies
Clone Name:	OTI1B2
Applications:	IF, IHC, WB
Recommended Dilution:	WB 1:2000, IF 1:100, IHC: 1:150
Reactivity:	Human, Mouse, Rat
Host:	Mouse
Isotype:	IgG1
Clonality:	Monoclonal
Immunogen:	Full length human recombinant protein of human PPWD1 (NP_056157) produced in HEK293T cell.
Formulation:	PBS (pH 7.3) containing 1% BSA, 50% glycerol and 0.02% sodium azide.
Concentration:	0.5 mg/ml
Purification:	Purified from mouse ascites fluids or tissue culture supernatant by affinity chromatography (protein A/G)
Conjugation:	Biotin
Storage:	Store at -20°C as received.
Stability:	Stable for 12 months from date of receipt.
Predicted Protein Size:	73.4 kDa
Gene Name:	peptidylprolyl isomerase domain and WD repeat containing 1
Database Link:	NP_056157 Entrez Gene 238831 Mouse Entrez Gene 294711 Rat Entrez Gene 23398 Human Q96BP3
Synonyms:	KIAA0073



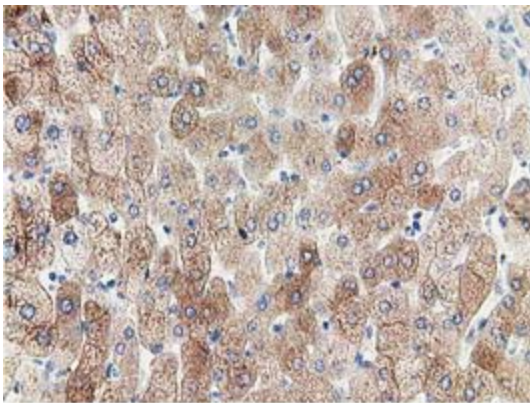
[View online »](#)

Product images:

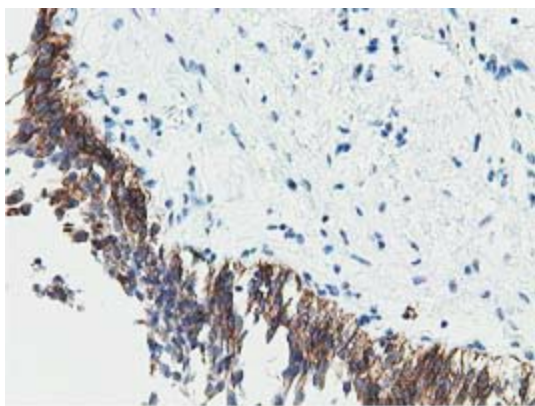
HEK293T cells were transfected with the pCMV6-ENTRY control (Cat# [PS100001], Left lane) or pCMV6-ENTRY PPWD1 (Cat# [RC204570], Right lane) cDNA for 48 hrs and lysed. Equivalent amounts of cell lysates (5 ug per lane) were separated by SDS-PAGE and immunoblotted with anti-PPWD1 (Cat# [TA501891]). Positive lysates [LY414604] (100ug) and [LC414604] (20ug) can be purchased separately from OriGene.



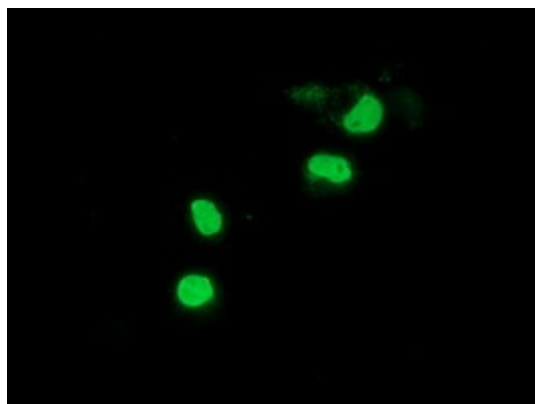
Immunohistochemical staining of paraffin-embedded Human Kidney tissue within the normal limits using anti-PPWD1 mouse monoclonal antibody. ([TA501891])



Immunohistochemical staining of paraffin-embedded Human liver tissue within the normal limits using anti-PPWD1 mouse monoclonal antibody. ([TA501891])



Immunohistochemical staining of paraffin-embedded Human bladder tissue within the normal limits using anti-PPWD1 mouse monoclonal antibody. ([TA501891])



Anti-PPWD1 mouse monoclonal antibody ([TA501891]) immunofluorescent staining of COS7 cells transiently transfected by pCMV6-ENTRY PPWD1 ([RC204570]).