

Product datasheet for **TA501890**

GRHPR Mouse Monoclonal Antibody [Clone ID: OTI4B6]

Product data:

Product Type:	Primary Antibodies
Clone Name:	OTI4B6
Applications:	FC, IHC, WB
Recommended Dilution:	WB: 1:2000, FLOW: 1:100, IHC: 1:50-1:150
Reactivity:	Human, Mouse, Rat
Host:	Mouse
Isotype:	IgG2a
Clonality:	Monoclonal
Immunogen:	Full length human recombinant protein of human GRHPR (NP_036335) produced in HEK293T cell.
Formulation:	PBS (pH 7.3) containing 1% BSA, 50% glycerol and 0.02% sodium azide.
Concentration:	0.84 mg/ml
Purification:	Purified from mouse ascites fluids or tissue culture supernatant by affinity chromatography (protein A/G)
Conjugation:	Unconjugated
Storage:	Store at -20°C as received.
Stability:	Stable for 12 months from date of receipt.
Predicted Protein Size:	35.5 kDa
Gene Name:	glyoxylate and hydroxypyruvate reductase
Database Link:	NP_036335 Entrez Gene 680021 Rat Entrez Gene 9380 Human Q9UBQ7
Background:	This gene encodes an enzyme with hydroxypyruvate reductase, glyoxylate reductase, and D-glycerate dehydrogenase enzymatic activities. The enzyme has widespread tissue expression and has a role in metabolism. Type II hyperoxaluria is caused by mutations in this gene. [provided by RefSeq]
Synonyms:	GLXR; GLYD; PH2

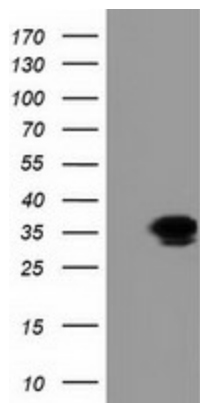


[View online »](#)

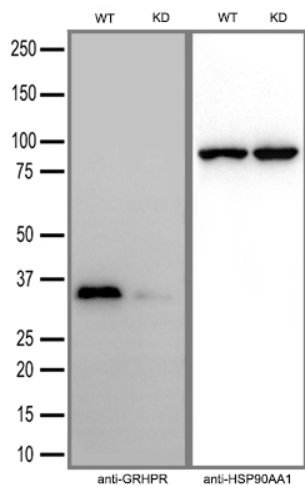
Protein Families: Druggable Genome

Protein Pathways: Glyoxylate and dicarboxylate metabolism, Metabolic pathways, Pyruvate metabolism

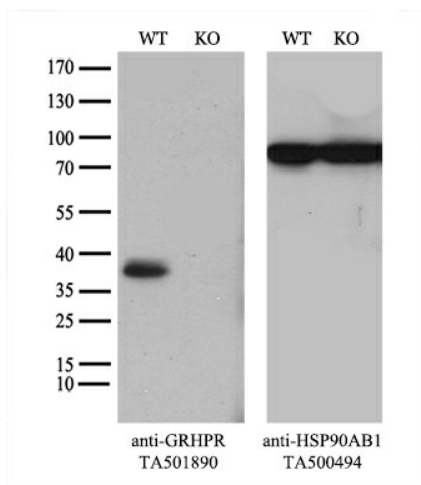
Product images:



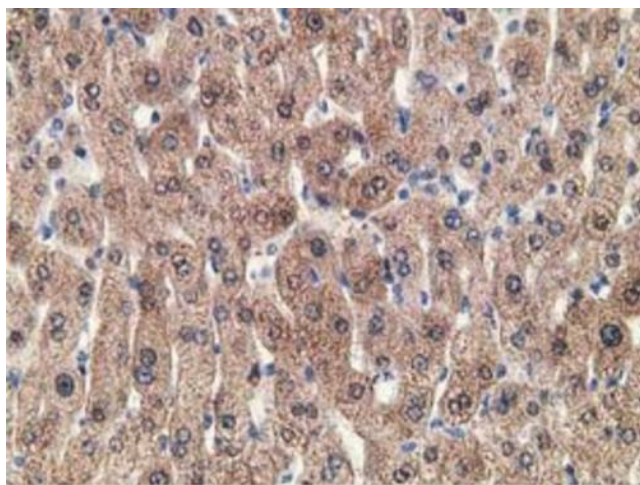
HEK293T cells were transfected with the pCMV6-ENTRY control (Left lane) or pCMV6-ENTRY GRHPR ([RC200963], Right lane) cDNA for 48 hrs and lysed. Equivalent amounts of cell lysates (5 ug per lane) were separated by SDS-PAGE and immunoblotted with anti-GRHPR. Positive lysates [LY415912] (100ug) and [LC415912] (20ug) can be purchased separately from OriGene.



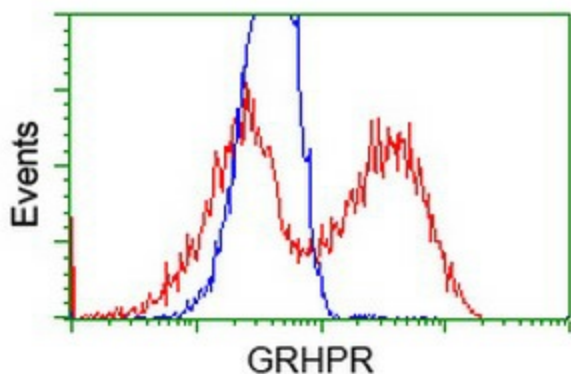
Equivalent amounts of cell lysates (30 ug per lane) of wild-type HeLa cells (WT) and GRHPR-Knockdown HeLa cells (KD) were separated by SDS-PAGE and immunoblotted with anti-GRHPR monoclonal antibody TA501890 (1:5000). Then the blotted membrane was stripped and reprobed with anti-HSP90AA1 antibody as a loading control.



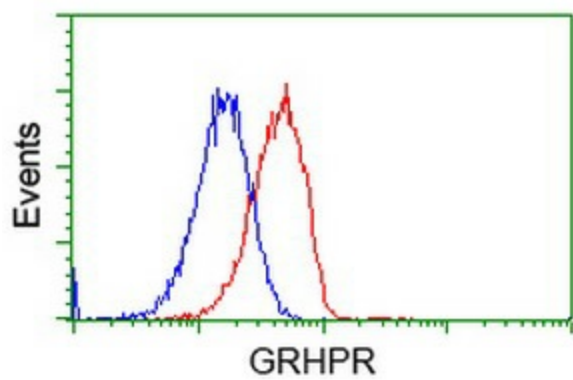
Equivalent amounts of cell lysates (10 ug per lane) of wild-type 293T cells (WT, Cat# LC810293T) and GRHPR-Knockout 293T cells (KO, Cat# [LC841943]) were separated by SDS-PAGE and immunoblotted with anti-GRHPR monoclonal antibody TA501890 (1:200^{*}). Then the blotted membrane was stripped and reprobed with anti-HSP90 antibody as a loading control.



Immunohistochemical staining of paraffin-embedded Human liver tissue within the normal limits using anti-GRHPR mouse monoclonal antibody at 1:150 (TA501890). Heat-induced epitope retrieval by EDTA solution buffer pH 8.0 at 120°C for 3 min.



HEK293T cells transfected with either [RC200963] overexpress plasmid (Red) or empty vector control plasmid (Blue) were immunostained by anti-GRHPR antibody (TA501890), and then analyzed by flow cytometry.



Flow cytometric Analysis of HeLa cells, using anti-GRHPR antibody (TA501890), (Red), compared to a nonspecific negative control antibody (TA50011), (Blue).