

## Product datasheet for **TA501887M**

### SOD2 Mouse Monoclonal Antibody [Clone ID: OTI1H6]

#### Product data:

Product Type:	Primary Antibodies
Clone Name:	OTI1H6
Applications:	WB
Recommended Dilution:	WB 1:500~2000
Reactivity:	Human, Dog
Host:	Mouse
Isotype:	IgG1
Clonality:	Monoclonal
Immunogen:	Full length human recombinant protein of human SOD2 (NP_000627) produced in HEK293T cell.
Formulation:	PBS (pH 7.3) containing 1% BSA, 50% glycerol and 0.02% sodium azide.
Concentration:	0.65 mg/ml
Purification:	Purified from mouse ascites fluids or tissue culture supernatant by affinity chromatography (protein A/G)
Conjugation:	Unconjugated
Storage:	Store at -20°C as received.
Stability:	Stable for 12 months from date of receipt.
Predicted Protein Size:	22.2 kDa
Gene Name:	superoxide dismutase 2
Database Link:	<a href="#">NP_000627</a> <a href="#">Entrez Gene 476258 Dog</a> <a href="#">Entrez Gene 6648 Human</a> <a href="#">P04179</a>



[View online »](#)

**Background:**

This gene is a member of the iron/manganese superoxide dismutase family. It encodes a mitochondrial protein that forms a homotetramer and binds one manganese ion per subunit. This protein binds to the superoxide byproducts of oxidative phosphorylation and converts them to hydrogen peroxide and diatomic oxygen. Mutations in this gene have been associated with idiopathic cardiomyopathy (IDC), premature aging, sporadic motor neuron disease, and cancer. Alternate transcriptional splice variants, encoding different isoforms, have been characterized. [provided by RefSeq]

**Synonyms:**

IPOB; MNSOD; MVCD6

**Protein Families:**

Druggable Genome, Transcription Factors

**Protein Pathways:**

Huntington's disease

**Product images:**

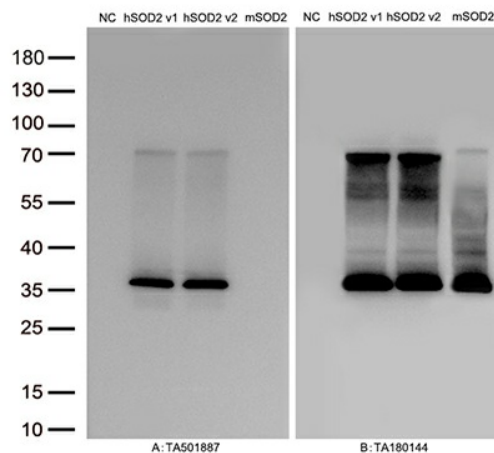
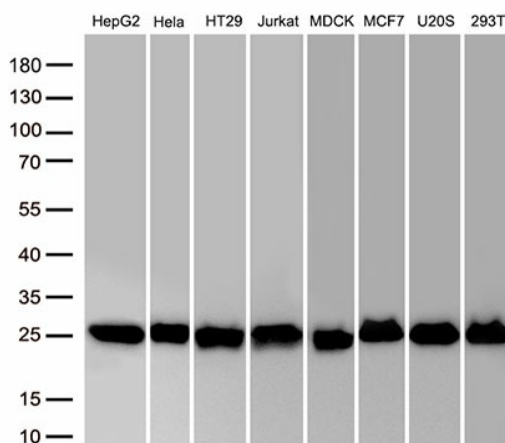
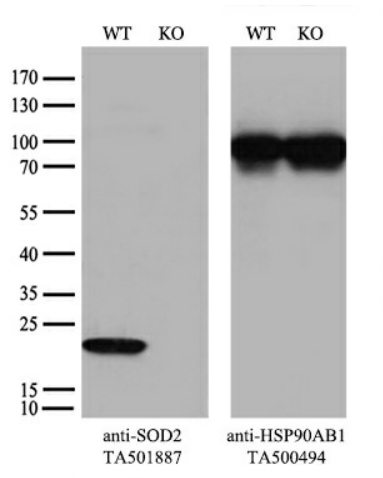


Figure A, Western blot analysis of overexpressed lysates (25ug per lane) from HEK293T cells transfected with empty plasmid ([PS100001], NC), human SOD2 plasmid ([RC202330], hSOD2 v1), human SOD2 plasmid ([RC212924], hSOD2 v2), mouse SOD2 plasmid ([MR202568], mSOD2) using anti-SOD2 antibody [TA501887] (1:5000). Figure B, Western blot analysis of the same samples as figure A with anti-DDK antibody ([TA180144], 1:5000)



Western blot analysis of extracts (50ug per lane) from 8 cell lines lysates by using anti-SOD2 antibody. ([TA501887], 1:500).



Equivalent amounts of cell lysates (10 ug per lane) of wild-type HEK293T cells (WT, Cat# LC810293T) and SOD2-Knockout HEK293T cells (KO, Cat# [LC840161]) were separated by SDS-PAGE and immunoblotted with anti-SOD2 monoclonal antibody [TA501887] (1:500). Then the blotted membrane was stripped and reprobed with anti-HSP90 antibody as a loading control.