

Product datasheet for **TA501886**

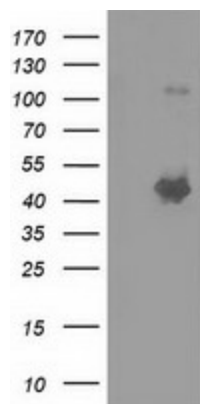
SLFNL1 Mouse Monoclonal Antibody [Clone ID: OTI4B11]

Product data:

Product Type:	Primary Antibodies
Clone Name:	OTI4B11
Applications:	WB
Recommended Dilution:	WB 1:2000
Reactivity:	Human
Host:	Mouse
Isotype:	IgG1
Clonality:	Monoclonal
Immunogen:	Full length human recombinant protein of human SLFNL1 (NP_659427) produced in HEK293T cell.
Formulation:	PBS (pH 7.3) containing 1% BSA, 50% glycerol and 0.02% sodium azide.
Concentration:	0.84 mg/ml
Purification:	Purified from mouse ascites fluids or tissue culture supernatant by affinity chromatography (protein A/G)
Conjugation:	Unconjugated
Storage:	Store at -20°C as received.
Stability:	Stable for 12 months from date of receipt.
Predicted Protein Size:	45.4 kDa
Gene Name:	schlafen like 1
Database Link:	NP_659427 Entrez Gene 200172 Human Q499Z3
Synonyms:	FLJ23878; MGC43873



[View online »](#)

Product images:

HEK293T cells were transfected with the pCMV6-ENTRY control (Left lane) or pCMV6-ENTRY SLFNL1 ([RC205566], Right lane) cDNA for 48 hrs and lysed. Equivalent amounts of cell lysates (5 ug per lane) were separated by SDS-PAGE and immunoblotted with anti-SLFNL1. Positive lysates [LY408129] (100ug) and [LC408129] (20ug) can be purchased separately from OriGene.