

## Product datasheet for **TA501880M**

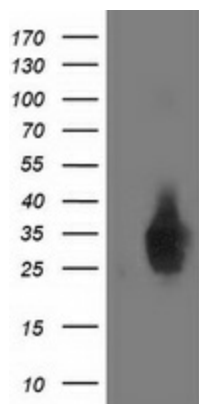
### **DUSP27 (DUPD1) Mouse Monoclonal Antibody [Clone ID: OTI6C6]**

#### **Product data:**

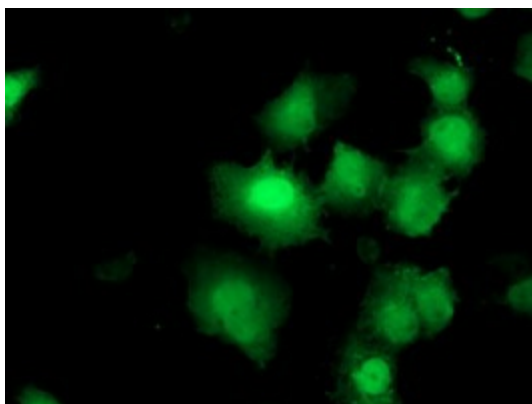
|                         |   |
|-------------------------|---|
| Product Type:           | Primary Antibodies  |
| Clone Name:             | OTI6C6  |
| Applications:           | FC, IF, WB  |
| Recommended Dilution:   | WB 1:2000, IF 1:100, FLOW 1:100   |
| Reactivity:             | Human, Mouse  |
| Host:                   | Mouse   |
| Isotype:                | IgG2b   |
| Clonality:              | Monoclonal  |
| Immunogen:              | Full length human recombinant protein of human DUPD1(NP_001003892) produced in HEK293T cell.              |
| Formulation:            | PBS (pH 7.3) containing 1% BSA, 50% glycerol and 0.02% sodium azide.                                      |
| Concentration:          | 1 mg/ml   |
| Purification:           | Purified from mouse ascites fluids or tissue culture supernatant by affinity chromatography (protein A/G) |
| Conjugation:            | Unconjugated  |
| Storage:                | Store at -20°C as received.   |
| Stability:              | Stable for 12 months from date of receipt.  |
| Predicted Protein Size: | 25.2 kDa  |
| Gene Name:              | dual specificity phosphatase 29   |
| Database Link:          | <a href="#">NP_001003892</a><br><a href="#">Entrez Gene 338599 Human</a><br><a href="#">Q68J44</a>        |
| Synonyms:               | DUSP27; FMDSP   |
| Protein Families:       | Phosphatase   |

[View online »](#)

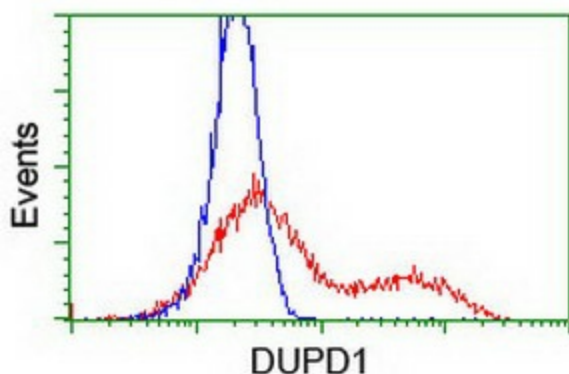
## Product images:



HEK293T cells were transfected with the pCMV6-ENTRY control (Left lane) or pCMV6-ENTRY DUPD1 ([RC214361], Right lane) cDNA for 48 hrs and lysed. Equivalent amounts of cell lysates (5 ug per lane) were separated by SDS-PAGE and immunoblotted with anti-DUPD1. Positive lysates [LY424030] (100ug) and [LC424030] (20ug) can be purchased separately from OriGene.



Anti-DUPD1 mouse monoclonal antibody ([TA501880]) immunofluorescent staining of COS7 cells transiently transfected by pCMV6-ENTRY DUPD1 ([RC214361]).



HEK293T cells transfected with either [RC214361] overexpress plasmid (Red) or empty vector control plasmid (Blue) were immunostained by anti-DUPD1 antibody ([TA501880]), and then analyzed by flow cytometry.