

## Product datasheet for **TA501877M**

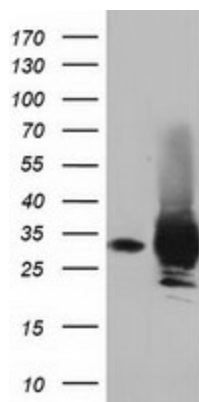
### **PYCR2 Mouse Monoclonal Antibody [Clone ID: OTI4A10]**

#### **Product data:**

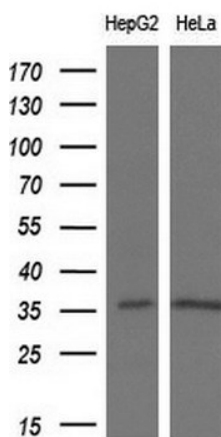
Product Type:	Primary Antibodies
Clone Name:	OTI4A10
Applications:	FC, IF, WB
Recommended Dilution:	WB 1:2000, IF 1:100, FLOW 1:100
Reactivity:	Human, Mouse, Rat
Host:	Mouse
Isotype:	IgG2a
Clonality:	Monoclonal
Immunogen:	Full length human recombinant protein of human PYCR2 (NP_037460) produced in HEK293T cell.
Formulation:	PBS (pH 7.3) containing 1% BSA, 50% glycerol and 0.02% sodium azide.
Concentration:	0.67 mg/ml
Purification:	Purified from mouse ascites fluids or tissue culture supernatant by affinity chromatography (protein A/G)
Conjugation:	Unconjugated
Storage:	Store at -20°C as received.
Stability:	Stable for 12 months from date of receipt.
Predicted Protein Size:	33.5 kDa
Gene Name:	pyrroline-5-carboxylate reductase 2
Database Link:	<a href="#">NP_037460</a> <a href="#">Entrez Gene 69051 Mouse</a> <a href="#">Entrez Gene 364064 Rat</a> <a href="#">Entrez Gene 29920 Human</a> <a href="#">Q96C36</a>
Synonyms:	HLD10; P5CR2
Protein Pathways:	Arginine and proline metabolism, Metabolic pathways


[View online »](#)

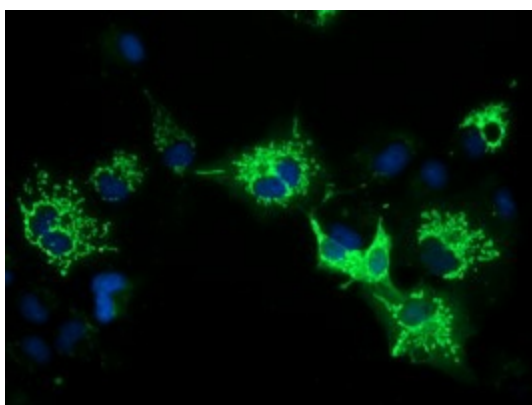
## Product images:



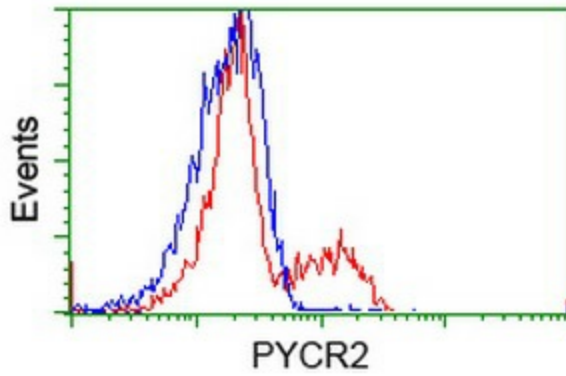
HEK293T cells were transfected with the pCMV6-ENTRY control (Cat# [PS100001], Left lane) or pCMV6-ENTRY PYCR2 (Cat# [RC204525], Right lane) cDNA for 48 hrs and lysed. Equivalent amounts of cell lysates (5 ug per lane) were separated by SDS-PAGE and immunoblotted with anti-PYCR2 (Cat# [TA501877]). Positive lysates [LY402246] (100ug) and [LC402246] (20ug) can be purchased separately from OriGene.



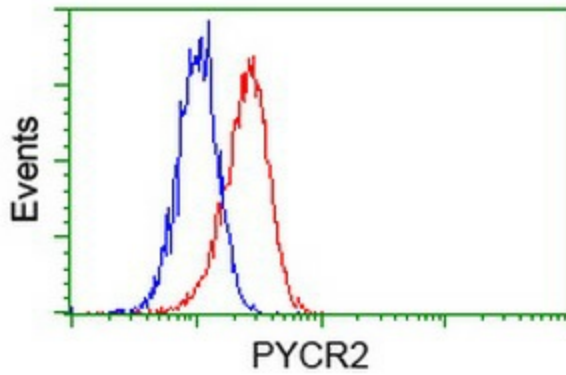
Western blot analysis of extracts (10ug) from 2 different cell lines by using anti-PYCR2 monoclonal antibody at 1:200 dilution.



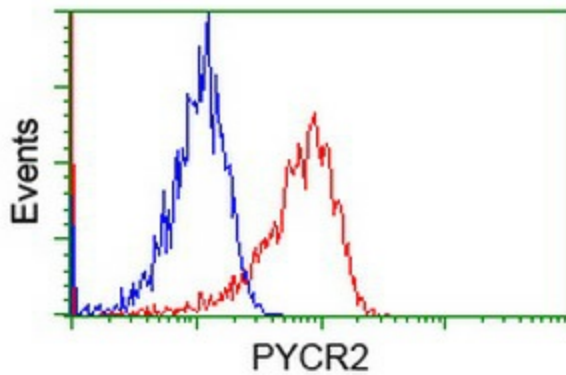
Anti-PYCR2 mouse monoclonal antibody ([TA501877]) immunofluorescent staining of COS7 cells transiently transfected by pCMV6-ENTRY PYCR2 ([RC204525]).



HEK293T cells transfected with either [RC204525] overexpress plasmid (Red) or empty vector control plasmid (Blue) were immunostained by anti-PYCR2 antibody ([TA501877]), and then analyzed by flow cytometry.



Flow cytometric Analysis of HeLa cells, using anti-PYCR2 antibody ([TA501877]), (Red), compared to a nonspecific negative control antibody (TA50011), (Blue).



Flow cytometric Analysis of Jurkat cells, using anti-PYCR2 antibody ([TA501877]), (Red), compared to a nonspecific negative control antibody (TA50011), (Blue).