

## Product datasheet for **TA501877BM**

### **PYCR2 Mouse Monoclonal Antibody (HRP conjugated) [Clone ID: OTI4A10]**

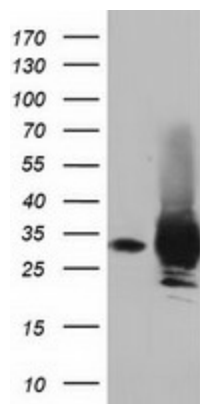
#### **Product data:**

|                         |   |
|-------------------------|---|
| Product Type:           | Primary Antibodies  |
| Clone Name:             | OTI4A10   |
| Applications:           | FC, IF, WB  |
| Recommended Dilution:   | WB 1:2000, IF 1:100, FLOW 1:100   |
| Reactivity:             | Human, Mouse, Rat   |
| Host:                   | Mouse   |
| Isotype:                | IgG2a   |
| Clonality:              | Monoclonal  |
| Immunogen:              | Full length human recombinant protein of human PYCR2 (NP_037460) produced in HEK293T cell.  |
| Formulation:            | PBS (pH 7.3) containing 1% BSA, 50% glycerol.   |
| Concentration:          | 0.5 mg/ml   |
| Purification:           | Purified from mouse ascites fluids or tissue culture supernatant by affinity chromatography (protein A/G)   |
| Conjugation:            | HRP   |
| Storage:                | Store at -20°C as received.   |
| Stability:              | Stable for 12 months from date of receipt.  |
| Predicted Protein Size: | 33.5 kDa  |
| Gene Name:              | pyrroline-5-carboxylate reductase 2   |
| Database Link:          | <a href="#">NP_037460</a><br><a href="#">Entrez Gene 69051 Mouse</a> <a href="#">Entrez Gene 364064 Rat</a> <a href="#">Entrez Gene 29920 Human</a><br><a href="#">Q96C36</a> |
| Synonyms:               | HLD10; P5CR2  |
| Protein Pathways:       | Arginine and proline metabolism, Metabolic pathways   |

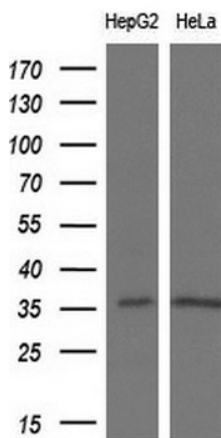


[View online »](#)

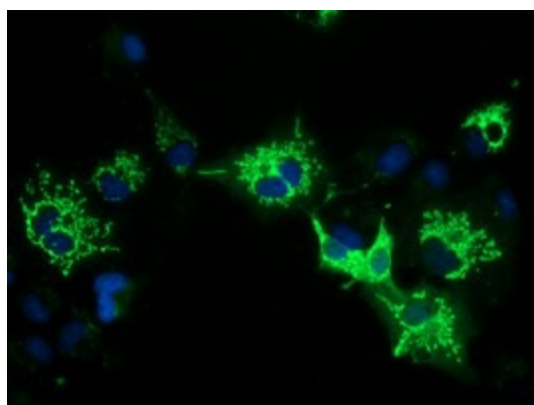
**Product images:**



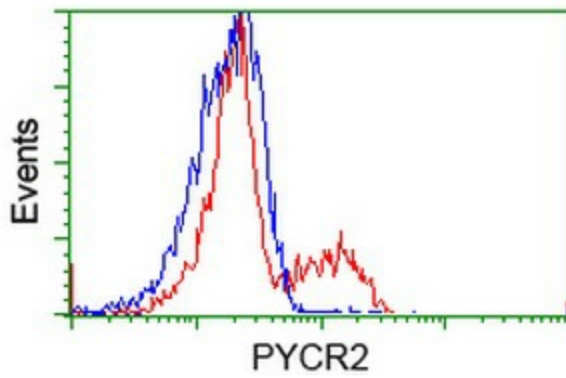
HEK293T cells were transfected with the pCMV6-ENTRY control (Cat# [PS100001], Left lane) or pCMV6-ENTRY PYCR2 (Cat# [RC204525], Right lane) cDNA for 48 hrs and lysed. Equivalent amounts of cell lysates (5 ug per lane) were separated by SDS-PAGE and immunoblotted with anti-PYCR2(Cat# [TA501877]). Positive lysates [LY402246] (100ug) and [LC402246] (20ug) can be purchased separately from OriGene.



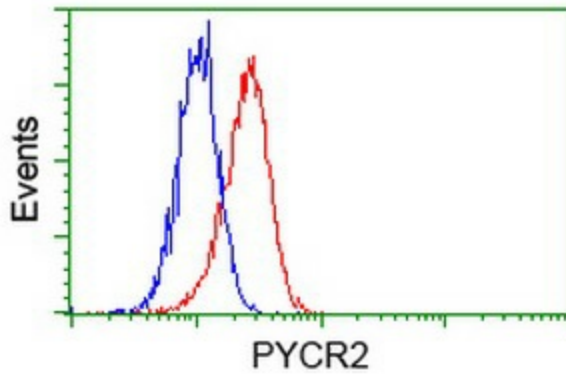
Western blot analysis of extracts (10ug) from 2 different cell lines by using anti-PYCR2 monoclonal antibody at 1:200 dilution.



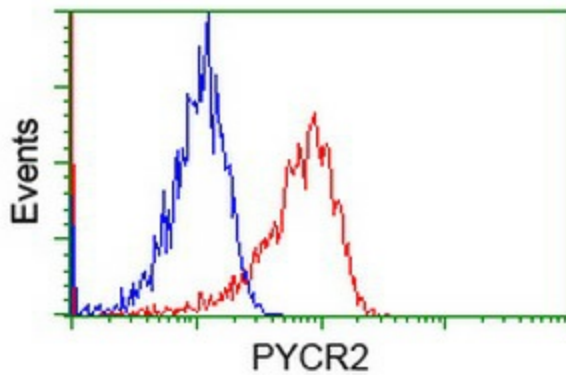
Anti-PYCR2 mouse monoclonal antibody ([TA501877]) immunofluorescent staining of COS7 cells transiently transfected by pCMV6-ENTRY PYCR2 ([RC204525]).



HEK293T cells transfected with either [RC204525] overexpress plasmid (Red) or empty vector control plasmid (Blue) were immunostained by anti-PYCR2 antibody ([TA501877]), and then analyzed by flow cytometry.



Flow cytometric Analysis of HeLa cells, using anti-PYCR2 antibody ([TA501877]), (Red), compared to a nonspecific negative control antibody (TA50011), (Blue).



Flow cytometric Analysis of Jurkat cells, using anti-PYCR2 antibody ([TA501877]), (Red), compared to a nonspecific negative control antibody (TA50011), (Blue).