

Product datasheet for **TA501875BM**

Ribonuclease Inhibitor (RNH1) Mouse Monoclonal Antibody (HRP conjugated) [Clone ID: OTI3F11]

Product data:

Product Type:	Primary Antibodies
Clone Name:	OTI3F11
Applications:	FC, IHC, WB
Recommended Dilution:	WB 1:500~2000, FLOW 1:100, IHC: 1:150
Reactivity:	Human, Dog, Rat, Monkey
Host:	Mouse
Isotype:	IgG1
Clonality:	Monoclonal
Immunogen:	Full length human recombinant protein of human RNH1 (NP_002930) produced in HEK293T cell.
Formulation:	PBS (pH 7.3) containing 1% BSA, 50% glycerol.
Concentration:	0.5 mg/ml
Purification:	Purified from mouse ascites fluids or tissue culture supernatant by affinity chromatography (protein A/G)
Conjugation:	HRP
Storage:	Store at -20°C as received.
Stability:	Stable for 12 months from date of receipt.
Predicted Protein Size:	49.8 kDa
Gene Name:	ribonuclease/angiogenin inhibitor 1
Database Link:	NP_002930 Entrez Gene 100360501 RatEntrez Gene 483402 DogEntrez Gene 720791 MonkeyEntrez Gene 6050 Human P13489



[View online »](#)

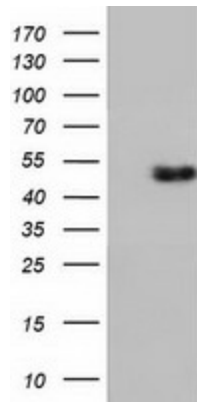
Background:

Placental ribonuclease inhibitor (PRI) is a member of a family of proteinaceous cytoplasmic RNase inhibitors that occur in many tissues and bind to both intracellular and extracellular RNases (summarized by Lee et al., 1988 [PubMed 3219362]). In addition to control of intracellular RNases, the inhibitor may have a role in the regulation of angiogenin (MIM 105850). Ribonuclease inhibitor, of 50,000 Da, binds to ribonucleases and holds them in a latent form. Since neutral and alkaline ribonucleases probably play a critical role in the turnover of RNA in eukaryotic cells, RNH may be essential for control of mRNA turnover; the interaction of eukaryotic cells with ribonuclease may be reversible in vivo. [supplied by OMIM]

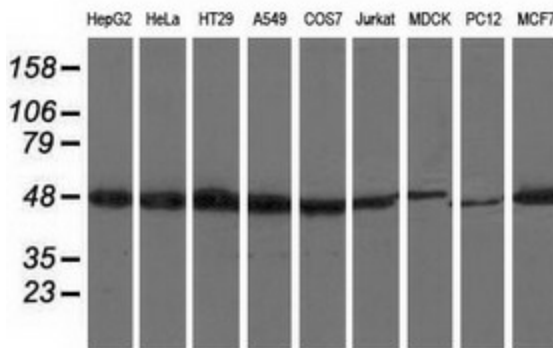
Synonyms:

RAI; RNH

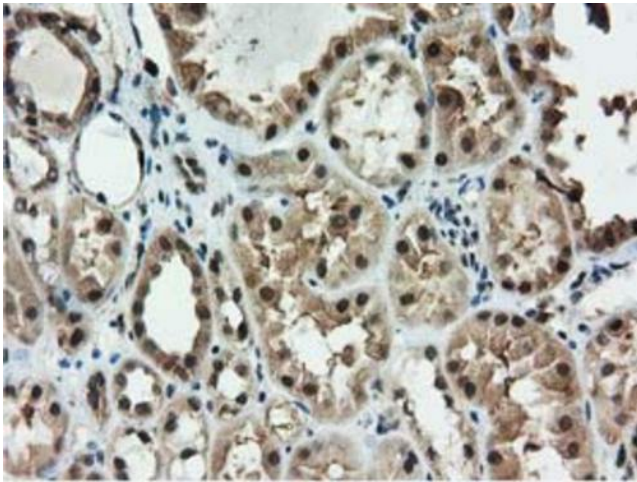
Product images:



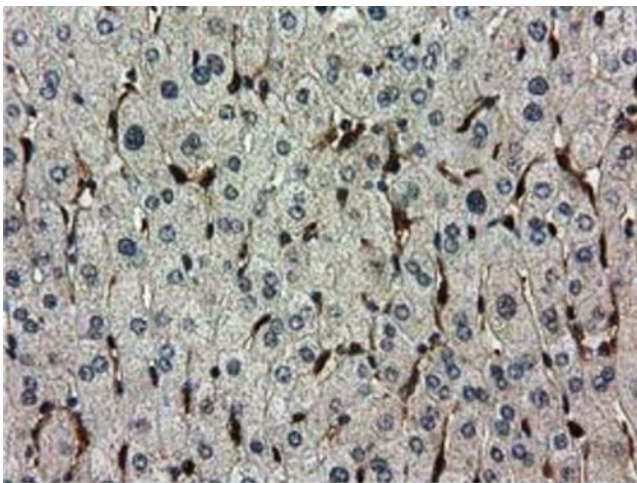
HEK293T cells were transfected with the pCMV6-ENTRY control (Cat# [PS100001], Left lane) or pCMV6-ENTRY RNH1 (Cat# [RC208360], Right lane) cDNA for 48 hrs and lysed. Equivalent amounts of cell lysates (5 ug per lane) were separated by SDS-PAGE and immunoblotted with anti-RNH1(Cat# [TA501875]). Positive lysates [LY401028] (100ug) and [LC401028] (20ug) can be purchased separately from OriGene.



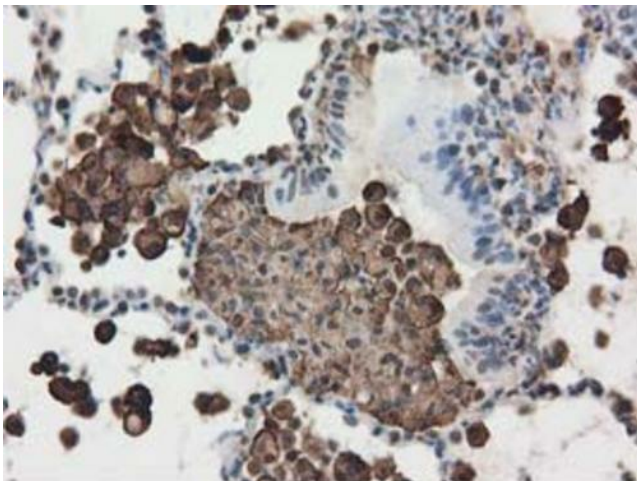
Western blot analysis of extracts (35ug) from 9 different cell lines by using anti-RNH1 monoclonal antibody.



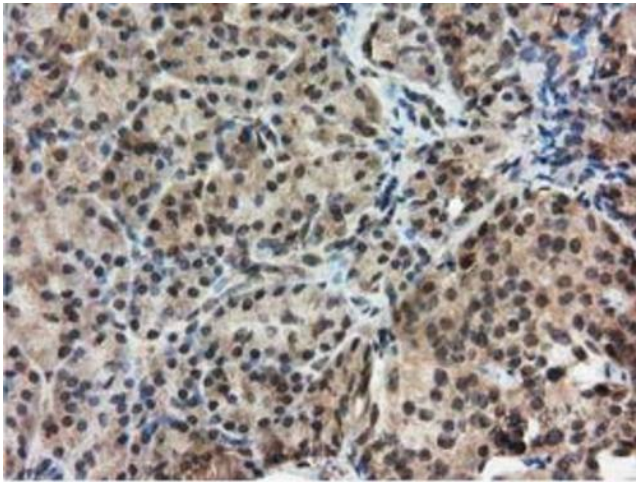
Immunohistochemical staining of paraffin-embedded Human Kidney tissue within the normal limits using anti-RNH1 mouse monoclonal antibody. ([TA501875])



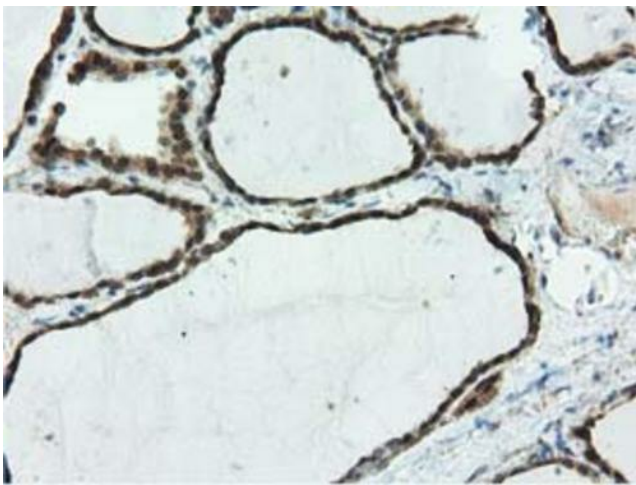
Immunohistochemical staining of paraffin-embedded Human liver tissue within the normal limits using anti-RNH1 mouse monoclonal antibody. ([TA501875])



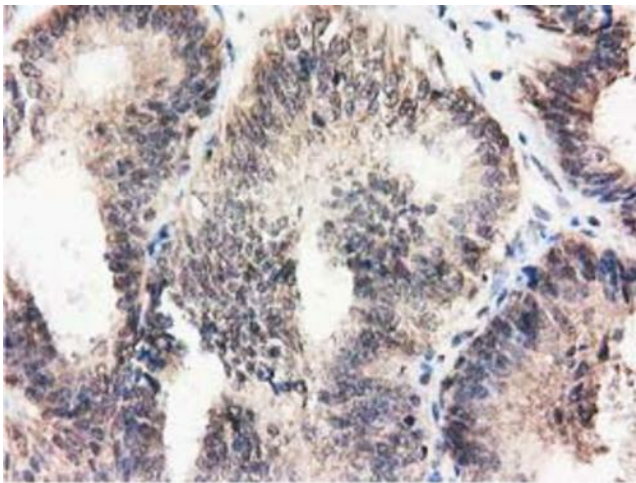
Immunohistochemical staining of paraffin-embedded Carcinoma of Human lung tissue using anti-RNH1 mouse monoclonal antibody. ([TA501875])



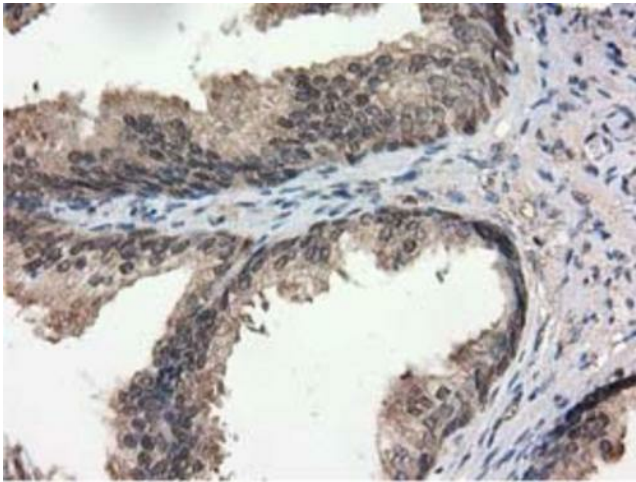
Immunohistochemical staining of paraffin-embedded Human pancreas tissue within the normal limits using anti-RNH1 mouse monoclonal antibody. ([TA501875])



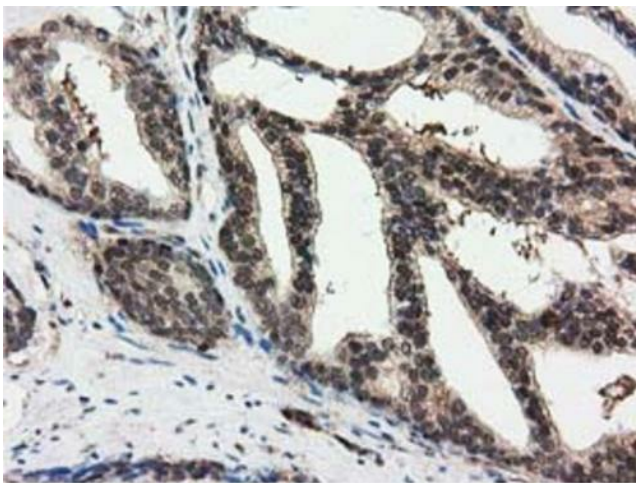
Immunohistochemical staining of paraffin-embedded Human thyroid tissue within the normal limits using anti-RNH1 mouse monoclonal antibody. ([TA501875])



Immunohistochemical staining of paraffin-embedded Adenocarcinoma of Human endometrium tissue using anti-RNH1 mouse monoclonal antibody. ([TA501875])



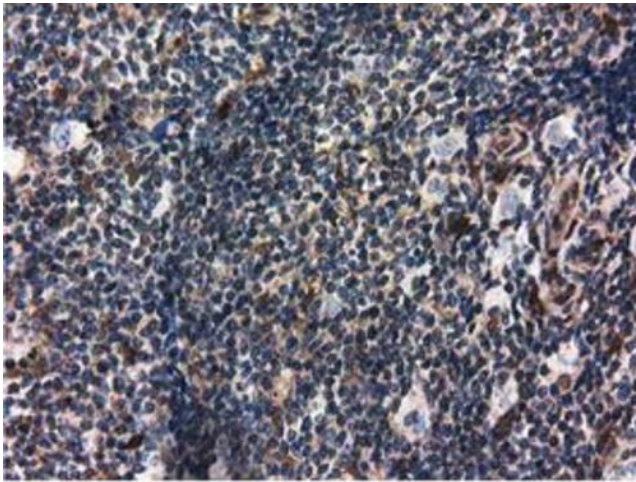
Immunohistochemical staining of paraffin-embedded Human prostate tissue within the normal limits using anti-RNH1 mouse monoclonal antibody. ([TA501875])



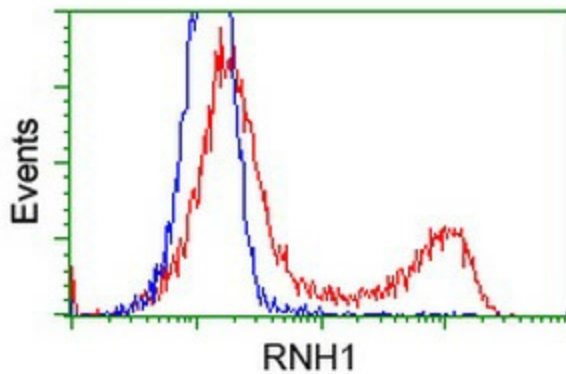
Immunohistochemical staining of paraffin-embedded Carcinoma of Human prostate tissue using anti-RNH1 mouse monoclonal antibody. ([TA501875])



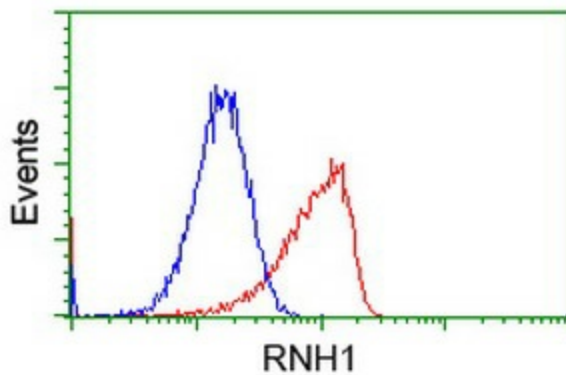
Immunohistochemical staining of paraffin-embedded Human lymph node tissue within the normal limits using anti-RNH1 mouse monoclonal antibody. ([TA501875])



Immunohistochemical staining of paraffin-embedded Human Lymphoma tissue using anti-RNH1 mouse monoclonal antibody. ([TA501875])



HEK293T cells transfected with either [RC208360] overexpress plasmid (Red) or empty vector control plasmid (Blue) were immunostained by anti-RNH1 antibody ([TA501875]), and then analyzed by flow cytometry.



Flow cytometric Analysis of HeLa cells, using anti-RNH1 antibody ([TA501875]), (Red), compared to a nonspecific negative control antibody (TA50011), (Blue).