

Product datasheet for **TA501874**

Ribonuclease Inhibitor (RNH1) Mouse Monoclonal Antibody [Clone ID: OTI4G4]

Product data:

Product Type:	Primary Antibodies
Clone Name:	OTI4G4
Applications:	FC, IF, IHC, WB
Recommended Dilution:	WB 1:2000, IF 1:100, FLOW 1:100, IHC: 1:150
Reactivity:	Human
Host:	Mouse
Isotype:	IgG1
Clonality:	Monoclonal
Immunogen:	Full length human recombinant protein of human RNH1 (NP_002930) produced in HEK293T cell.
Formulation:	PBS (pH 7.3) containing 1% BSA, 50% glycerol and 0.02% sodium azide.
Concentration:	1 mg/ml
Purification:	Purified from mouse ascites fluids or tissue culture supernatant by affinity chromatography (protein A/G)
Conjugation:	Unconjugated
Storage:	Store at -20°C as received.
Stability:	Stable for 12 months from date of receipt.
Predicted Protein Size:	49.8 kDa
Gene Name:	ribonuclease/angiogenin inhibitor 1
Database Link:	NP_002930 Entrez Gene 6050 Human P13489



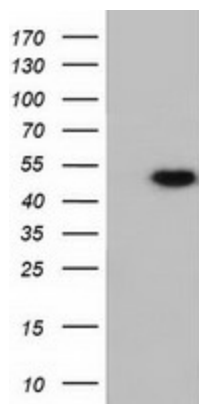
[View online »](#)

Background:

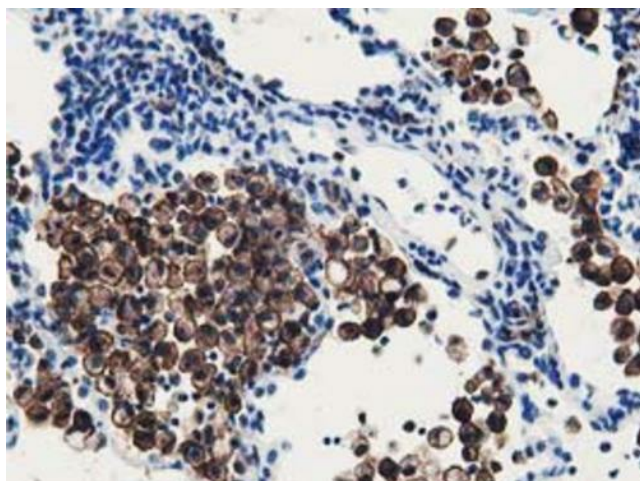
Placental ribonuclease inhibitor (PRI) is a member of a family of proteinaceous cytoplasmic RNase inhibitors that occur in many tissues and bind to both intracellular and extracellular RNases (summarized by Lee et al., 1988 [PubMed 3219362]). In addition to control of intracellular RNases, the inhibitor may have a role in the regulation of angiogenin (MIM 105850). Ribonuclease inhibitor, of 50,000 Da, binds to ribonucleases and holds them in a latent form. Since neutral and alkaline ribonucleases probably play a critical role in the turnover of RNA in eukaryotic cells, RNH may be essential for control of mRNA turnover; the interaction of eukaryotic cells with ribonuclease may be reversible in vivo. [supplied by OMIM]

Synonyms:

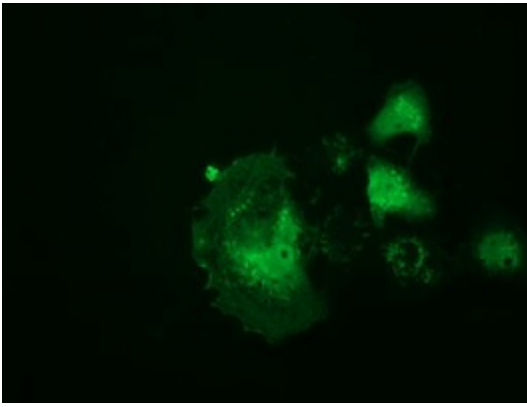
RAI; RNH

Product images:


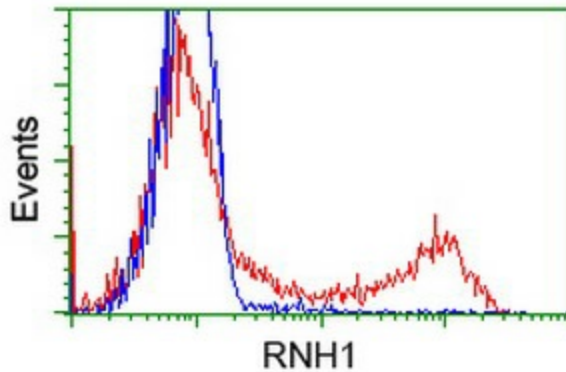
HEK293T cells were transfected with the pCMV6-ENTRY control (Left lane) or pCMV6-ENTRY RNH1 ([RC208360], Right lane) cDNA for 48 hrs and lysed. Equivalent amounts of cell lysates (5 ug per lane) were separated by SDS-PAGE and immunoblotted with anti-RNH1. Positive lysates [LY401028] (100ug) and [LC401028] (20ug) can be purchased separately from OriGene.



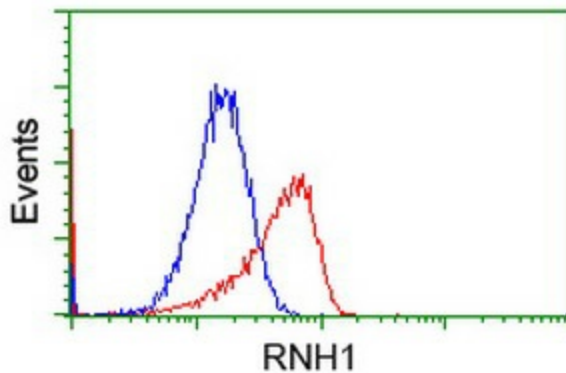
Immunohistochemical staining of paraffin-embedded Carcinoma of Human lung tissue using anti-RNH1 mouse monoclonal antibody. (TA501874). Heat-induced epitope retrieval by EDTA solution buffer pH 8.0 at 120°C for 3 min.



Anti-RNH1 mouse monoclonal antibody (TA501874) immunofluorescent staining of COS7 cells transiently transfected by pCMV6-ENTRY RNH1 ([RC208360]).



HEK293T cells transfected with either [RC208360] overexpress plasmid (Red) or empty vector control plasmid (Blue) were immunostained by anti-RNH1 antibody (TA501874), and then analyzed by flow cytometry.



Flow cytometric Analysis of HeLa cells, using anti-RNH1 antibody (TA501874), (Red), compared to a nonspecific negative control antibody (TA50011), (Blue).