

Product datasheet for **TA501869BM**

ALDH1L1 Mouse Monoclonal Antibody (HRP conjugated) [Clone ID: OTI2A6]

Product data:

Product Type:	Primary Antibodies
Clone Name:	OTI2A6
Applications:	FC, WB
Recommended Dilution:	WB 1:500~2000, FLOW 1:100
Reactivity:	Human, Dog, Rat, Monkey, Mouse
Host:	Mouse
Isotype:	IgG1
Clonality:	Monoclonal
Immunogen:	Full length human recombinant protein of human ALDH1L1 (NP_036322) produced in HEK293T cell.
Formulation:	PBS (pH 7.3) containing 1% BSA, 50% glycerol.
Concentration:	0.5 mg/ml
Purification:	Purified from mouse ascites fluids or tissue culture supernatant by affinity chromatography (protein A/G)
Conjugation:	HRP
Storage:	Store at -20°C as received.
Stability:	Stable for 12 months from date of receipt.
Predicted Protein Size:	98.6 kDa
Gene Name:	aldehyde dehydrogenase 1 family member L1
Database Link:	NP_036322 Entrez Gene 64392 Rat Entrez Gene 100855730 Dog Entrez Gene 716977 Monkey Entrez Gene 10840 Human O75891
Background:	The protein encoded by this gene catalyzes the conversion of 10-formyltetrahydrofolate, NADP, and water to tetrahydrofolate, NADPH, and carbon dioxide. The encoded protein belongs to the aldehyde dehydrogenase family and is responsible for formate oxidation in vivo. Deficiencies in this gene can result in an accumulation of formate and subsequent methanol poisoning. [provided by RefSeq]



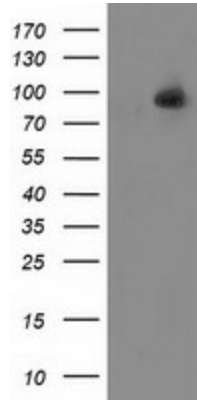
[View online »](#)

Synonyms: 10-fTHF; 10-FTHFDH; FDH; FTHFD

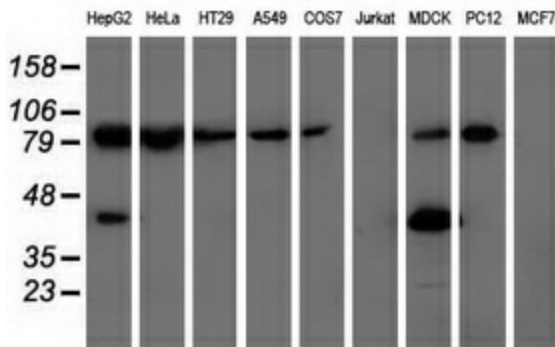
Protein Families: Druggable Genome

Protein Pathways: One carbon pool by folate

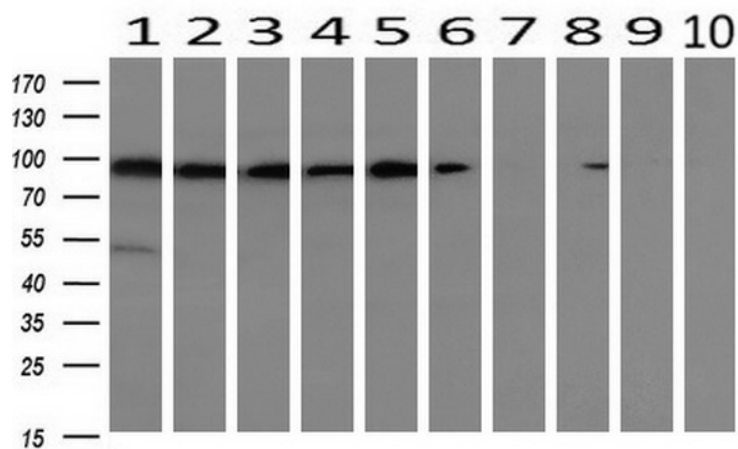
Product images:



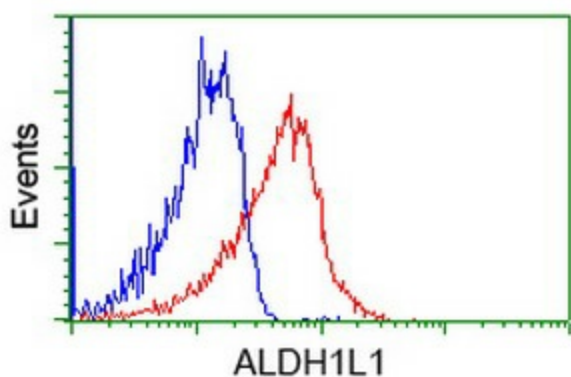
HEK293T cells were transfected with the pCMV6-ENTRY control (Left lane) or pCMV6-ENTRY ALDH1L1 ([RC213720], Right lane) cDNA for 48 hrs and lysed. Equivalent amounts of cell lysates (5 ug per lane) were separated by SDS-PAGE and immunoblotted with anti-ALDH1L1 ([TA501869]). Positive lysates [LY415919] (100ug) and [LC415919] (20ug) can be purchased separately from OriGene.



Western blot analysis of extracts (35ug) from 9 different cell lines by using anti-ALDH1L1 monoclonal antibody.



Western blot analysis of extracts (10ug) from 10 Human tissue by using anti-ALDH1L1 monoclonal antibody at 1:200 (1: Testis; 2: Omentum; 3: Uterus; 4: Breast; 5: Brain; 6: Liver; 7: Ovary; 8: Thyroid gland; 9: colon;10: spleen).



Flow cytometric Analysis of Jurkat cells, using anti-ALDH1L1 antibody ([TA501869]), (Red), compared to a nonspecific negative control antibody (TA50011), (Blue).