

Product datasheet for **TA501844**

MICAL1 Mouse Monoclonal Antibody [Clone ID: OTI6G2]

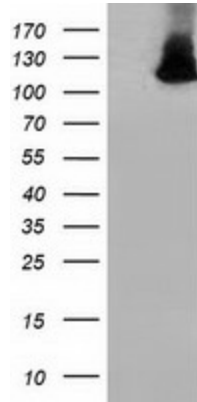
Product data:

Product Type:	Primary Antibodies
Clone Name:	OTI6G2
Applications:	FC, IF, WB
Recommended Dilution:	WB 1:500, IF 1:100, FLOW 1:100
Reactivity:	Human
Host:	Mouse
Isotype:	IgG1
Clonality:	Monoclonal
Immunogen:	Full length human recombinant protein of human MICAL1 (NP_073602) produced in HEK293T cell.
Formulation:	PBS (pH 7.3) containing 1% BSA, 50% glycerol and 0.02% sodium azide.
Concentration:	1 mg/ml
Purification:	Purified from mouse ascites fluids or tissue culture supernatant by affinity chromatography (protein A/G)
Conjugation:	Unconjugated
Storage:	Store at -20°C as received.
Stability:	Stable for 12 months from date of receipt.
Predicted Protein Size:	117.7 kDa
Gene Name:	microtubule associated monooxygenase, calponin and LIM domain containing 1
Database Link:	NP_073602 Entrez Gene 64780 Human Q8TDZ2
Background:	May be a cytoskeletal regulator that connects NEDD9 to intermediate filaments
Synonyms:	MICAL; MICAL-1; NICAL

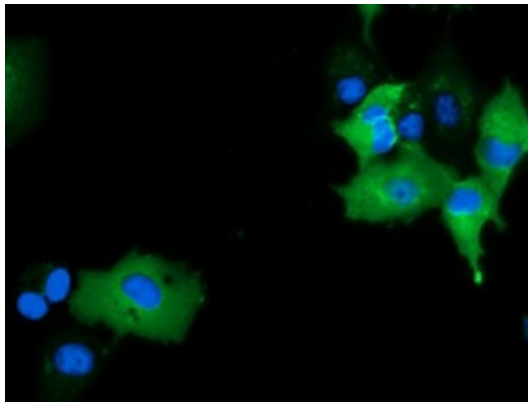


[View online »](#)

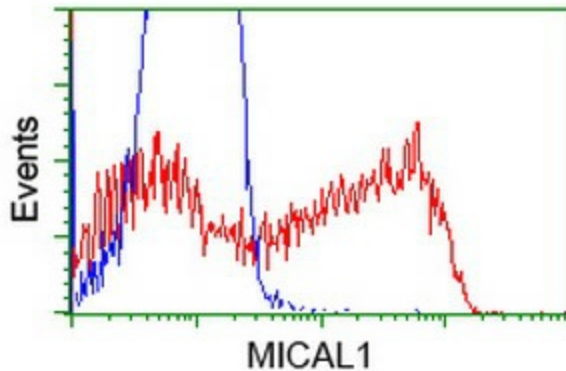
Product images:



HEK293T cells were transfected with the pCMV6-ENTRY control (Left lane) or pCMV6-ENTRY MICAL1 ([RC208308], Right lane) cDNA for 48 hrs and lysed. Equivalent amounts of cell lysates (5 ug per lane) were separated by SDS-PAGE and immunoblotted with anti-MICAL1. Positive lysates [LY402940] (100ug) and [LC402940] (20ug) can be purchased separately from OriGene.



Anti-MICAL1 mouse monoclonal antibody (TA501844) immunofluorescent staining of COS7 cells transiently transfected by pCMV6-ENTRY MICAL1 ([RC208308]).



HEK293T cells transfected with either [RC208308] overexpress plasmid (Red) or empty vector control plasmid (Blue) were immunostained by anti-MICAL1 antibody (TA501844), and then analyzed by flow cytometry.