

## Product datasheet for **TA501841S**

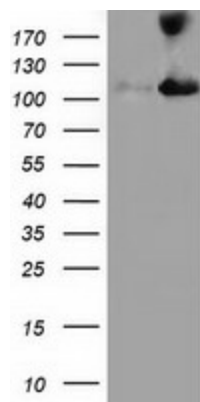
### MICAL1 Mouse Monoclonal Antibody [Clone ID: OTI1C2]

#### Product data:

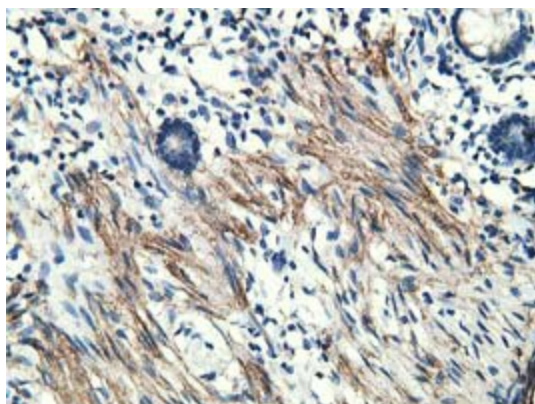
Product Type:	Primary Antibodies
Clone Name:	OTI1C2
Applications:	FC, IHC, WB
Recommended Dilution:	WB 1:2000, FLOW 1:100, IHC 1:150
Reactivity:	Human
Host:	Mouse
Isotype:	IgG1
Clonality:	Monoclonal
Immunogen:	Full length human recombinant protein of human MICAL1 (NP_073602) produced in HEK293T cell.
Formulation:	PBS (pH 7.3) containing 1% BSA, 50% glycerol and 0.02% sodium azide.
Concentration:	0.63 mg/ml
Purification:	Purified from mouse ascites fluids or tissue culture supernatant by affinity chromatography (protein A/G)
Conjugation:	Unconjugated
Storage:	Store at -20°C as received.
Stability:	Stable for 12 months from date of receipt.
Predicted Protein Size:	117.7 kDa
Gene Name:	microtubule associated monooxygenase, calponin and LIM domain containing 1
Database Link:	<a href="#">NP_073602</a> <a href="#">Entrez Gene 64780 Human</a> <a href="#">Q8TDZ2</a>
Synonyms:	MICAL; MICAL-1; NICAL



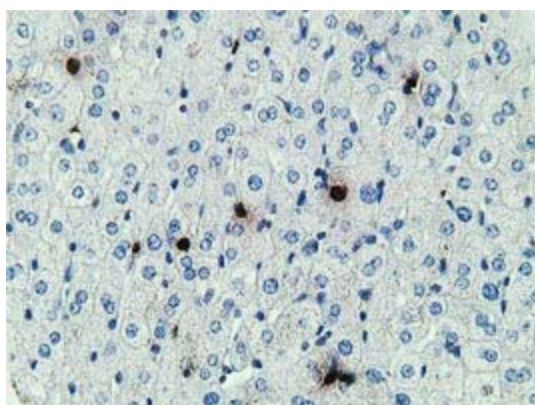
[View online »](#)

**Product images:**

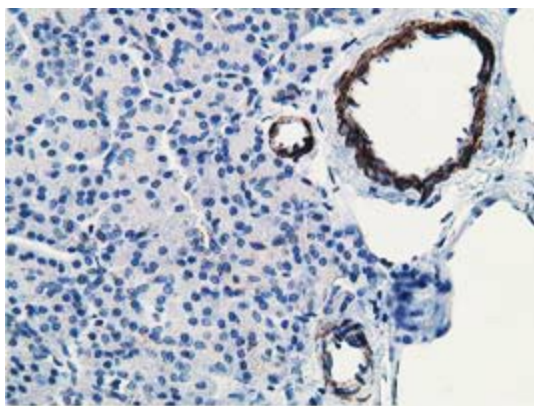
HEK293T cells were transfected with the pCMV6-ENTRY control (Left lane) or pCMV6-ENTRY MICAL1 ([RC208308], Right lane) cDNA for 48 hrs and lysed. Equivalent amounts of cell lysates (5 ug per lane) were separated by SDS-PAGE and immunoblotted with anti-MICAL1. Positive lysates [LY402940] (100ug) and [LC402940] (20ug) can be purchased separately from OriGene.



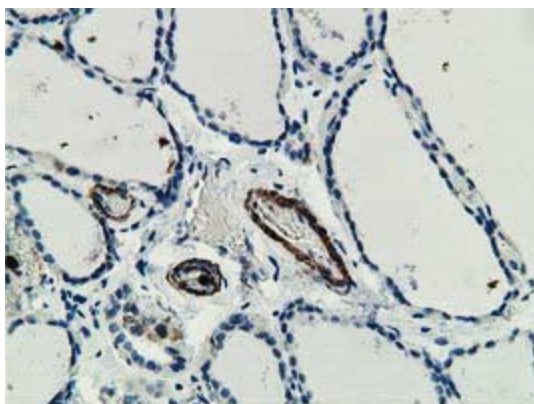
Immunohistochemical staining of paraffin-embedded Human colon tissue within the normal limits using anti-MICAL1 mouse monoclonal antibody ([TA501841]) at 1:150 dilution.



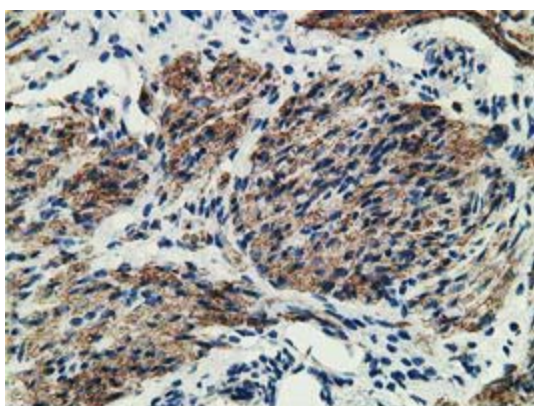
Immunohistochemical staining of paraffin-embedded Human liver tissue within the normal limits using anti-MICAL1 mouse monoclonal antibody ([TA501841]) at 1:150 dilution.



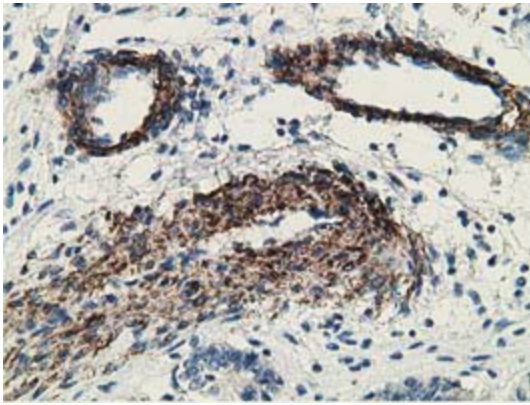
Immunohistochemical staining of paraffin-embedded Human pancreas tissue within the normal limits using anti-MICAL1 mouse monoclonal antibody ([TA501841]) at 1:150 dilution.



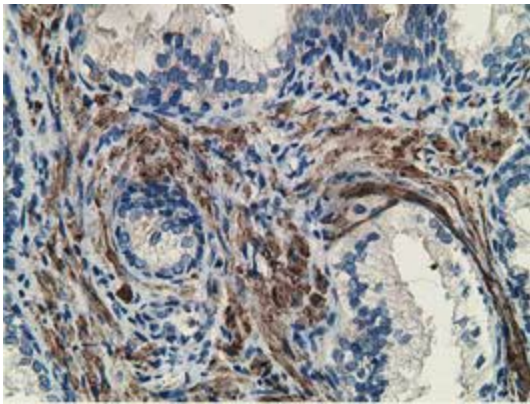
Immunohistochemical staining of paraffin-embedded Human thyroid tissue within the normal limits using anti-MICAL1 mouse monoclonal antibody ([TA501841]) at 1:150 dilution.



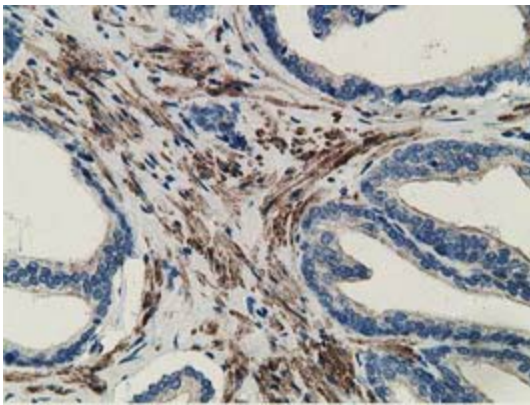
Immunohistochemical staining of paraffin-embedded Human endometrium tissue within the normal limits using anti-MICAL1 mouse monoclonal antibody ([TA501841]) at 1:150 dilution.



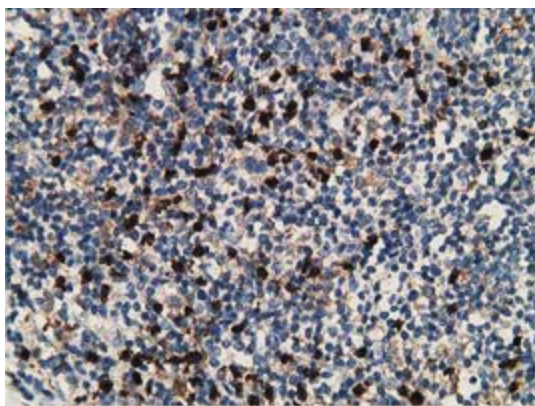
Immunohistochemical staining of paraffin-embedded Adenocarcinoma of Human endometrium tissue using anti-MICAL1 mouse monoclonal antibody (TA501841) at 1:150 dilution.



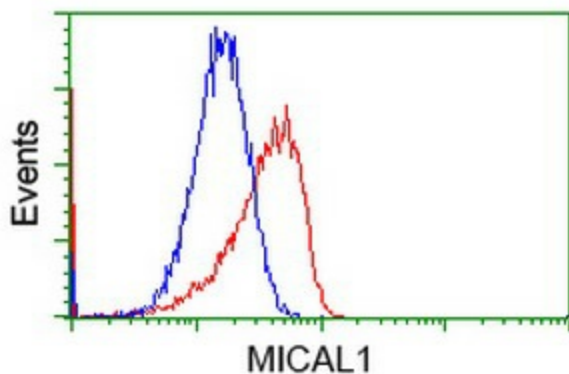
Immunohistochemical staining of paraffin-embedded Human prostate tissue within the normal limits using anti-MICAL1 mouse monoclonal antibody (TA501841) at 1:150 dilution.



Immunohistochemical staining of paraffin-embedded Carcinoma of Human prostate tissue using anti-MICAL1 mouse monoclonal antibody (TA501841) at 1:150 dilution.



Immunohistochemical staining of paraffin-embedded Human lymphoma tissue using anti-MICAL1 mouse monoclonal antibody ([TA501841]) at 1:150 dilution.



Flow cytometric Analysis of HeLa cells, using anti-MICAL1 antibody ([TA501841]), (Red), compared to a nonspecific negative control antibody (TA50011), (Blue).