

Product datasheet for **TA501839**

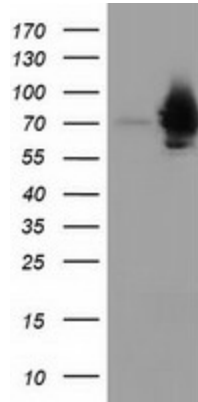
HSPA6 Mouse Monoclonal Antibody [Clone ID: OTI2C2]

Product data:

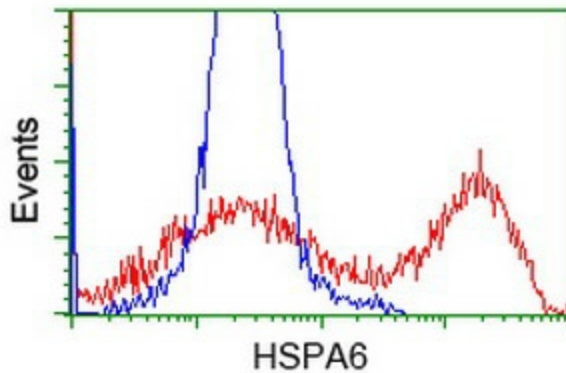
Product Type:	Primary Antibodies
Clone Name:	OTI2C2
Applications:	FC, WB
Recommended Dilution:	WB 1:2000, FLOW 1:100
Reactivity:	Human
Host:	Mouse
Isotype:	IgG2b
Clonality:	Monoclonal
Immunogen:	Full length human recombinant protein of human HSPA6 (NP_002146) produced in HEK293T cell.
Formulation:	PBS (pH 7.3) containing 1% BSA, 50% glycerol and 0.02% sodium azide.
Concentration:	0.88 mg/ml
Purification:	Purified from mouse ascites fluids or tissue culture supernatant by affinity chromatography (protein A/G)
Conjugation:	Unconjugated
Storage:	Store at -20°C as received.
Stability:	Stable for 12 months from date of receipt.
Predicted Protein Size:	70.8 kDa
Gene Name:	heat shock protein family A (Hsp70) member 6
Database Link:	NP_002146 Entrez Gene 3310 Human P17066
Synonyms:	heat shock 70kDa protein 6 (HSP70B'); heat shock 70kD protein 6 (HSP70B')
Protein Pathways:	Antigen processing and presentation, Endocytosis, MAPK signaling pathway, Spliceosome



[View online »](#)

Product images:

HEK293T cells were transfected with the pCMV6-ENTRY control (Left lane) or pCMV6-ENTRY HSPA6 ([RC207795], Right lane) cDNA for 48 hrs and lysed. Equivalent amounts of cell lysates (5 ug per lane) were separated by SDS-PAGE and immunoblotted with anti-HSPA6. Positive lysates [LY419498] (100ug) and [LC419498] (20ug) can be purchased separately from OriGene.



Flow cytometric analysis of HEK293T cells transfected with either [RC207795] plasmid (Red) or empty vector control plasmid (Blue) using anti-HSPA6 antibody (TA501839) at 1:100 dilution.