

## Product datasheet for **TA501825AM**

### Growth Arrest Specific Protein 7 (GAS7) Mouse Monoclonal Antibody (Biotin conjugated) [Clone ID: OTI6G5]

#### Product data:

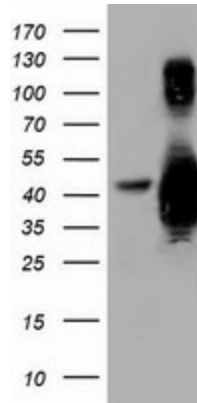
|                         |  |
|-------------------------|--|
| Product Type:           | Primary Antibodies   |
| Clone Name:             | OTI6G5   |
| Applications:           | FC, IF, IHC, WB  |
| Recommended Dilution:   | WB 1:2000, IHC 1:150, IF 1:100, FLOW 1:100   |
| Reactivity:             | Human, Mouse, Rat  |
| Host:                   | Mouse  |
| Isotype:                | IgG2a  |
| Clonality:              | Monoclonal   |
| Immunogen:              | Full length human recombinant protein of human GAS7 (NP_003635) produced in HEK293T cell.  |
| Formulation:            | PBS (pH 7.3) containing 1% BSA, 50% glycerol and 0.02% sodium azide.   |
| Concentration:          | 0.5 mg/ml  |
| Purification:           | Purified from mouse ascites fluids or tissue culture supernatant by affinity chromatography (protein A/G)  |
| Conjugation:            | Biotin   |
| Storage:                | Store at -20°C as received.  |
| Stability:              | Stable for 12 months from date of receipt.   |
| Predicted Protein Size: | 39.0 kDa   |
| Gene Name:              | growth arrest specific 7   |
| Database Link:          | <a href="#">NP_003635</a><br><a href="#">Entrez Gene 14457 Mouse</a> <a href="#">Entrez Gene 85246 Rat</a> <a href="#">Entrez Gene 8522 Human</a><br><a href="#">O60861</a>  |
| Background:             | Growth arrest-specific 7 is expressed primarily in terminally differentiated brain cells and predominantly in mature cerebellar Purkinje neurons. GAS7 plays a putative role in neuronal development. Several transcript variants encoding proteins which vary in the N-terminus have been described. [provided by RefSeq] |



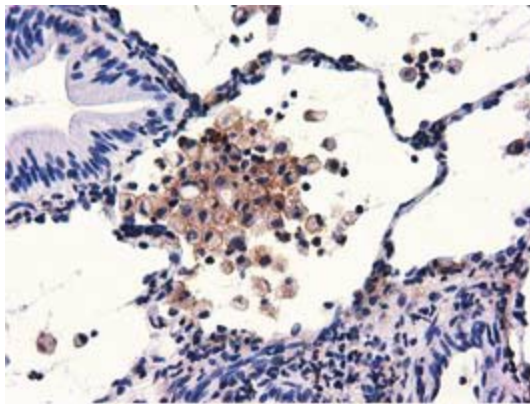
[View online »](#)

Synonyms: GAS7; MLL  
 Protein Families: Transcription Factors

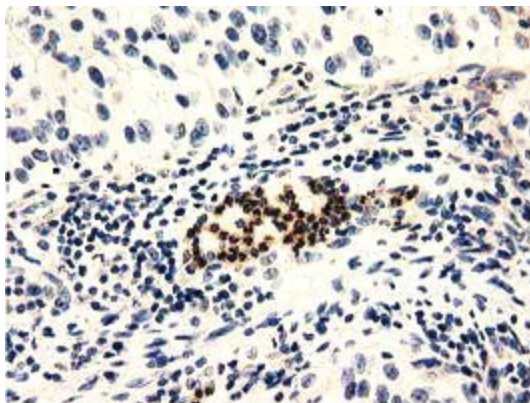
**Product images:**



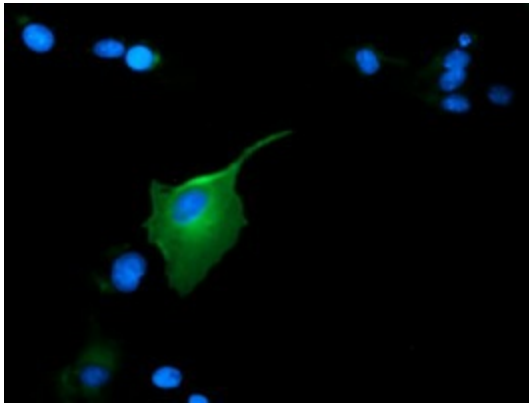
HEK293T cells were transfected with the pCMV6-ENTRY control (Left lane) or pCMV6-ENTRY GAS7 ([RC215256], Right lane) cDNA for 48 hrs and lysed. Equivalent amounts of cell lysates (5 ug per lane) were separated by SDS-PAGE and immunoblotted with anti-GAS7. Positive lysates [LY418527] (100ug) and [LC418527] (20ug) can be purchased separately from OriGene.



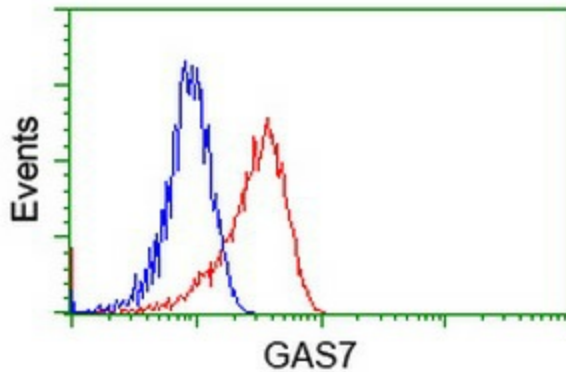
Immunohistochemical staining of paraffin-embedded Carcinoma of Human lung tissue using anti-GAS7 mouse monoclonal antibody. (Heat-induced epitope retrieval by 10mM citric buffer, pH6.0, 100°C for 10min, [TA501825])



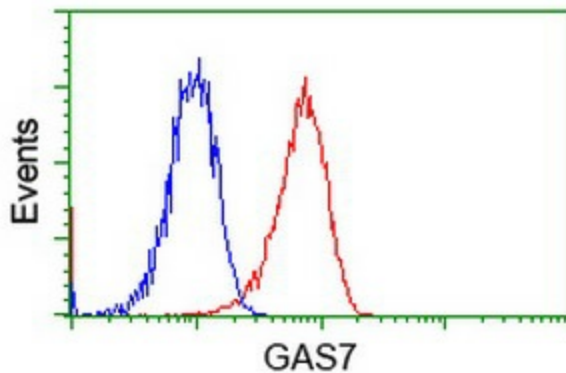
Immunohistochemical staining of paraffin-embedded Carcinoma of Human bladder tissue using anti-GAS7 mouse monoclonal antibody. (Heat-induced epitope retrieval by 10mM citric buffer, pH6.0, 100°C for 10min, [TA501825])



Anti-GAS7 mouse monoclonal antibody ([TA501825]) immunofluorescent staining of COS7 cells transiently transfected by pCMV6-ENTRY GAS7 ([RC215256]).



Flow cytometric Analysis of HeLa cells, using anti-GAS7 antibody ([TA501825]), (Red), compared to a nonspecific negative control antibody (TA50011), (Blue).



Flow cytometric Analysis of Jurkat cells, using anti-GAS7 antibody ([TA501825]), (Red), compared to a nonspecific negative control antibody (TA50011), (Blue).