

## Product datasheet for **TA501820**

### **SULT1A1 Mouse Monoclonal Antibody [Clone ID: OTI8B8]**

#### **Product data:**

<b>Product Type:</b>	Primary Antibodies
<b>Clone Name:</b>	OTI8B8
<b>Applications:</b>	FC, IHC, WB
<b>Recommended Dilution:</b>	WB 1:500~2000, IHC 1:150, FLOW 1:100
<b>Reactivity:</b>	Human, Monkey
<b>Host:</b>	Mouse
<b>Isotype:</b>	IgG2b
<b>Clonality:</b>	Monoclonal
<b>Immunogen:</b>	Full length human recombinant protein of human SULT1A1 (NP_001046) produced in HEK293T cell.
<b>Formulation:</b>	PBS (pH 7.3) containing 1% BSA, 50% glycerol and 0.02% sodium azide.
<b>Concentration:</b>	0.71 mg/ml
<b>Purification:</b>	Purified from mouse ascites fluids or tissue culture supernatant by affinity chromatography (protein A/G)
<b>Conjugation:</b>	Unconjugated
<b>Storage:</b>	Store at -20°C as received.
<b>Stability:</b>	Stable for 12 months from date of receipt.
<b>Predicted Protein Size:</b>	34.0 kDa
<b>Gene Name:</b>	sulfotransferase family 1A member 1
<b>Database Link:</b>	<a href="#">NP_001046</a> <a href="#">Entrez Gene 709491 Monkey</a> <a href="#">Entrez Gene 6817 Human</a> <a href="#">P50225</a>
<b>Background:</b>	Sulfotransferase enzymes catalyze the sulfate conjugation of many hormones, neurotransmitters, drugs, and xenobiotic compounds. These cytosolic enzymes are different in their tissue distributions and substrate specificities. The gene structure (number and length of exons) is similar among family members. This gene encodes one of two phenol sulfotransferases with thermostable enzyme activity. Multiple alternatively spliced variants that encode two isoforms have been identified for this gene. [provided by RefSeq]

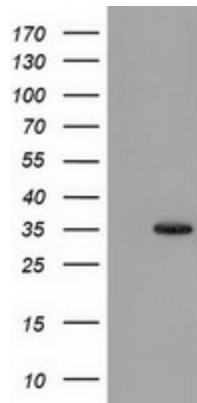


[View online »](#)

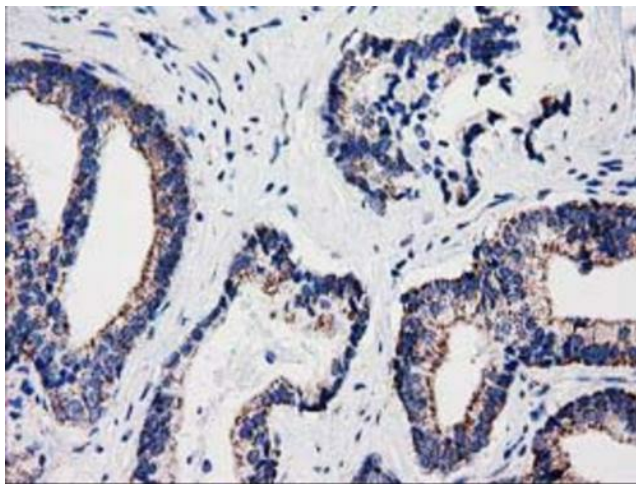
**Synonyms:** HAST1/HAST2; P-PST; P-PST 1; PST; ST1A1; ST1A3; STP; STP1; ts-PST; TSPST1

**Protein Pathways:** Sulfur metabolism

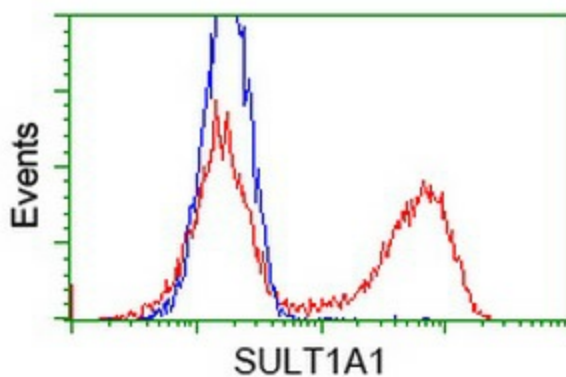
**Product images:**



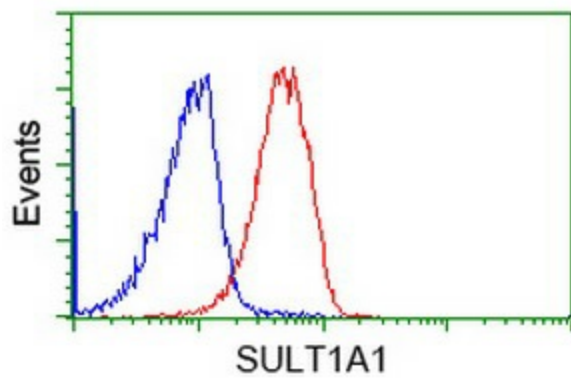
HEK293T cells were transfected with the pCMV6-ENTRY control (Left lane) or pCMV6-ENTRY SULT1A1 ([RC201601], Right lane) cDNA for 48 hrs and lysed. Equivalent amounts of cell lysates (5 ug per lane) were separated by SDS-PAGE and immunoblotted with anti-SULT1A1. Positive lysates [LY420735] (100ug) and [LC420735] (20ug) can be purchased separately from OriGene.



Immunohistochemical staining of paraffin-embedded Carcinoma of Human prostate tissue using anti-SULT1A1 mouse monoclonal antibody. Heat-induced epitope retrieval by EDTA solution buffer pH 8.0 at 120°C for 3 min.



HEK293T cells transfected with either [RC201601] overexpress plasmid (Red) or empty vector control plasmid (Blue) were immunostained by anti-SULT1A1 antibody (TA501820), and then analyzed by flow cytometry.



Flow cytometric Analysis of Jurkat cells, using anti-SULT1A1 antibody (TA501820), (Red), compared to a nonspecific negative control antibody (TA50011), (Blue).