

Product datasheet for **TA501813AM**

Haptoglobin (HP) Mouse Monoclonal Antibody (Biotin conjugated) [Clone ID: OTI4C2]

Product data:

Product Type:	Primary Antibodies
Clone Name:	OTI4C2
Applications:	FC, IF, WB
Recommended Dilution:	WB 1:1000, IF 1:100, FLOW 1:100
Reactivity:	Human
Host:	Mouse
Isotype:	IgG2b
Clonality:	Monoclonal
Immunogen:	Full length human recombinant protein of human HP (NP_005134) produced in HEK293T cell.
Formulation:	PBS (pH 7.3) containing 1% BSA, 50% glycerol and 0.02% sodium azide.
Concentration:	0.5 mg/ml
Purification:	Purified from mouse ascites fluids or tissue culture supernatant by affinity chromatography (protein A/G)
Conjugation:	Biotin
Storage:	Store at -20°C as received.
Stability:	Stable for 12 months from date of receipt.
Predicted Protein Size:	43.3 kDa
Gene Name:	haptoglobin
Database Link:	NP_005134 Entrez Gene 3240 Human P00738



[View online »](#)

Background:

This gene encodes a preproprotein, which is processed to yield both alpha and beta chains, which subsequently combine as a tetramer to produce haptoglobin. Haptoglobin functions to bind free plasma hemoglobin, which allows degradative enzymes to gain access to the hemoglobin, while at the same time preventing loss of iron through the kidneys and protecting the kidneys from damage by hemoglobin. Mutations in this gene and/or its regulatory regions cause ahaptoglobinemia or hypohaptoglobinemia. This gene has also been linked to diabetic nephropathy, the incidence of coronary artery disease in type 1 diabetes, Crohn's disease, inflammatory disease behavior, primary sclerosing cholangitis, susceptibility to idiopathic Parkinson's disease, and a reduced incidence of Plasmodium falciparum malaria. A similar duplicated gene is located next to this gene on chromosome 16. Multiple transcript variants encoding different isoforms have been found for this gene. [provided by RefSeq]

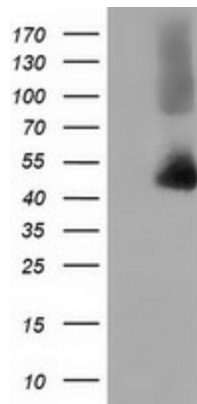
Synonyms:

BP; HP2ALPHA2; HPA1S

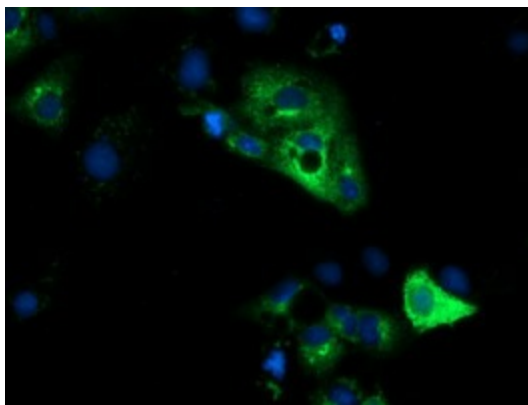
Protein Families:

Druggable Genome, Protease, Secreted Protein, Transmembrane

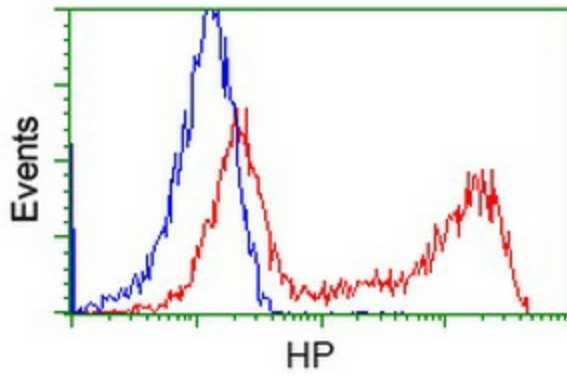
Product images:



HEK293T cells were transfected with the pCMV6-ENTRY control (Left lane) or pCMV6-ENTRY HP ([RC223612], Right lane) cDNA for 48 hrs and lysed. Equivalent amounts of cell lysates (5 ug per lane) were separated by SDS-PAGE and immunoblotted with anti-HP. Positive lysates [LY401576] (100ug) and [LC401576] (20ug) can be purchased separately from OriGene.



Anti-HP mouse monoclonal antibody ([TA501813]) immunofluorescent staining of COS7 cells transiently transfected by pCMV6-ENTRY HP ([RC223612]).



HEK293T cells transfected with either [RC223612] overexpress plasmid (Red) or empty vector control plasmid (Blue) were immunostained by anti-HP antibody ([TA501813]), and then analyzed by flow cytometry.