

Product datasheet for **TA501793S**

EPM2AIP1 Mouse Monoclonal Antibody [Clone ID: OTI5G8]

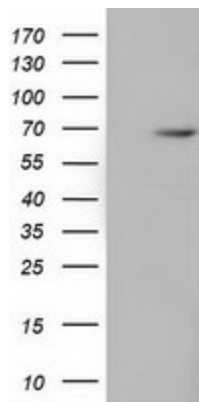
Product data:

Product Type:	Primary Antibodies
Clone Name:	OTI5G8
Applications:	FC, IF, WB
Recommended Dilution:	WB 1:500~2000, IF 1:100, FLOW 1:100
Reactivity:	Human, Rat, Mouse
Host:	Mouse
Isotype:	IgG2a
Clonality:	Monoclonal
Immunogen:	Full length human recombinant protein of human EPM2AIP1 (NP_055620) produced in HEK293T cell.
Formulation:	PBS (pH 7.3) containing 1% BSA, 50% glycerol and 0.02% sodium azide.
Concentration:	0.74 mg/ml
Purification:	Purified from mouse ascites fluids or tissue culture supernatant by affinity chromatography (protein A/G)
Conjugation:	Unconjugated
Storage:	Store at -20°C as received.
Stability:	Stable for 12 months from date of receipt.
Predicted Protein Size:	70.2 kDa
Gene Name:	EPM2A interacting protein 1
Database Link:	NP_055620 Entrez Gene 77781 Mouse Entrez Gene 316021 Rat Entrez Gene 9852 Human Q7L775
Background:	The EPM2A gene, which encodes laforin, is mutated in an autosomal recessive form of adolescent progressive myoclonus epilepsy. The protein encoded by this gene binds to laforin, but its function is not known. This gene is intronless. [provided by RefSeq]. COMPLETENESS: complete on the 3' end.
Synonyms:	FLJ11207; KIAA0766

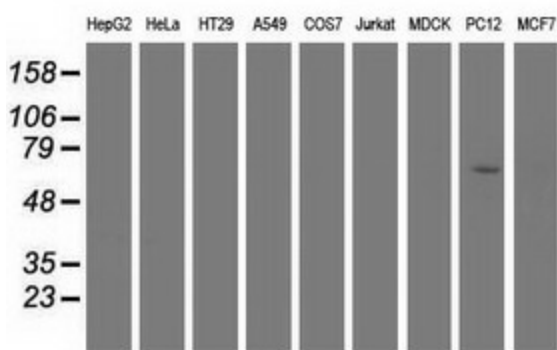


[View online »](#)

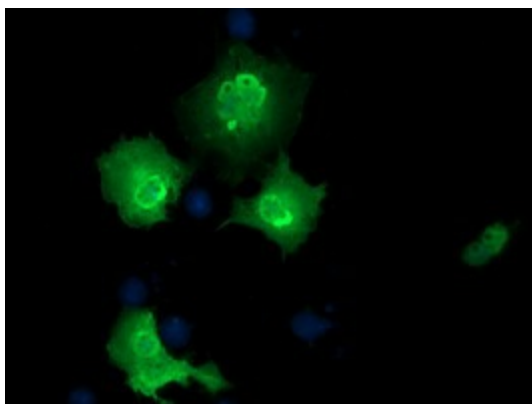
Product images:



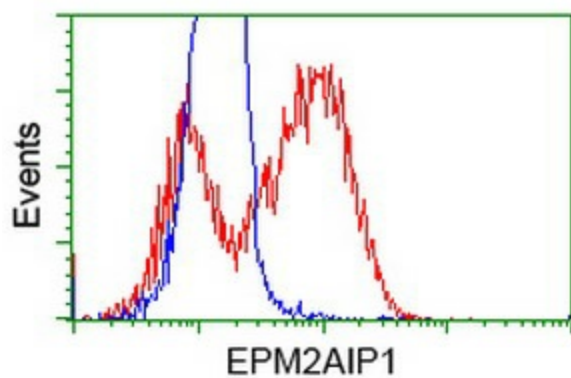
HEK293T cells were transfected with the pCMV6-ENTRY control (Left lane) or pCMV6-ENTRY EPM2AIP1 ([RC209239], Right lane) cDNA for 48 hrs and lysed. Equivalent amounts of cell lysates (5 ug per lane) were separated by SDS-PAGE and immunoblotted with anti-EPM2AIP1. Positive lysates [LY415014] (100ug) and [LC415014] (20ug) can be purchased separately from OriGene.



Western blot analysis of extracts (35ug) from 9 different cell lines by using anti-EPM2AIP1 monoclonal antibody.



Anti-EPM2AIP1 mouse monoclonal antibody ([TA501793]) immunofluorescent staining of COS7 cells transiently transfected by pCMV6-ENTRY EPM2AIP1 ([RC209239]).



HEK293T cells transfected with either [RC209239] overexpress plasmid (Red) or empty vector control plasmid (Blue) were immunostained by anti-EPM2AIP1 antibody ([TA501793]), and then analyzed by flow cytometry.