

Product datasheet for **TA501785AM**

alpha 1 Fetoprotein (AFP) Mouse Monoclonal Antibody (Biotin conjugated) [Clone ID: OTI1D1]

Product data:

Product Type:	Primary Antibodies
Clone Name:	OTI1D1
Applications:	FC, IHC, WB
Recommended Dilution:	WB 1:200~500, FLOW 1:100
Reactivity:	Human
Host:	Mouse
Isotype:	IgG1
Clonality:	Monoclonal
Immunogen:	Full length human recombinant protein of human AFP (NP_001125) produced in HEK293T cell.
Formulation:	PBS (pH 7.3) containing 1% BSA, 50% glycerol and 0.02% sodium azide.
Concentration:	0.5 mg/ml
Purification:	Purified from mouse ascites fluids or tissue culture supernatant by affinity chromatography (protein A/G)
Conjugation:	Biotin
Storage:	Store at -20°C as received.
Stability:	Stable for 12 months from date of receipt.
Predicted Protein Size:	66.3 kDa
Gene Name:	alpha fetoprotein
Database Link:	NP_001125 Entrez Gene 174 Human P02771



[View online »](#)

Background:

This gene encodes alpha-fetoprotein, a major plasma protein produced by the yolk sac and the liver during fetal life. Alpha-fetoprotein expression in adults is often associated with hepatoma or teratoma. However, hereditary persistence of alpha-fetoprotein may also be found in individuals with no obvious pathology. The protein is thought to be the fetal counterpart of serum albumin, and the alpha-fetoprotein and albumin genes are present in tandem in the same transcriptional orientation on chromosome 4. Alpha-fetoprotein is found in monomeric as well as dimeric and trimeric forms, and binds copper, nickel, fatty acids and bilirubin. The level of alpha-fetoprotein in amniotic fluid is used to measure renal loss of protein to screen for spina bifida and anencephaly. [provided by RefSeq]

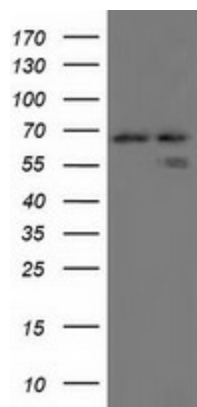
Synonyms:

AFPD; FETA; HPAFP

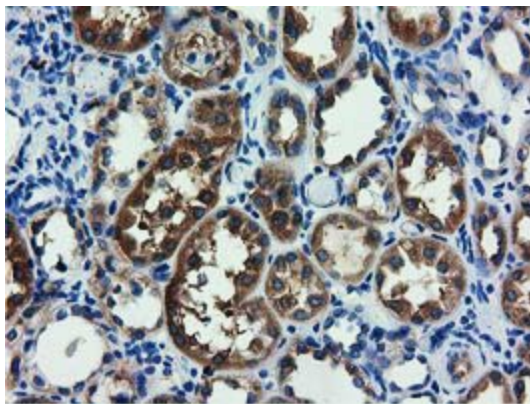
Protein Families:

Druggable Genome, Secreted Protein

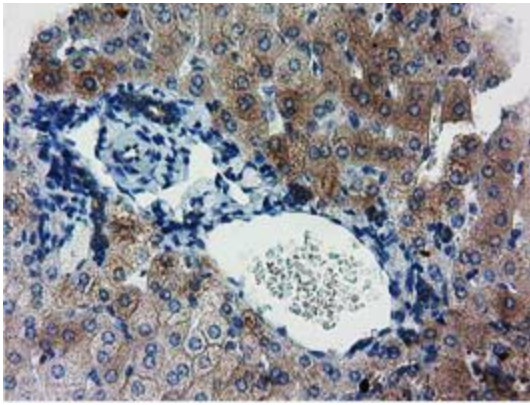
Product images:



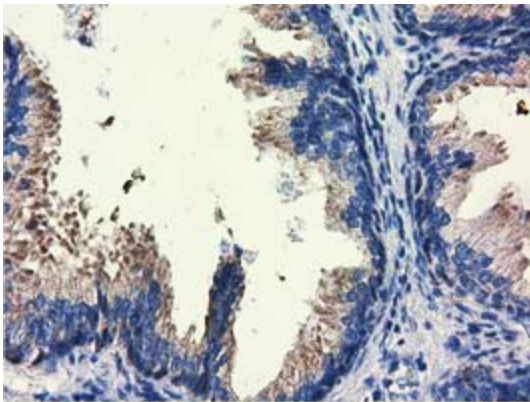
HEK293T cells were transfected with the pCMV6-ENTRY control (Left lane) or pCMV6-ENTRY AFP ([RC206622], Right lane) cDNA for 48 hrs and lysed. Equivalent amounts of cell lysates (5 ug per lane) were separated by SDS-PAGE and immunoblotted with anti-AFP. Positive lysates [LY400455] (100ug) and [LC400455] (20ug) can be purchased separately from OriGene.



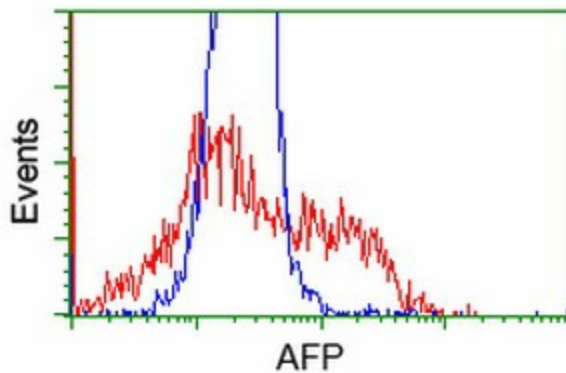
Immunohistochemical staining of paraffin-embedded Human Kidney tissue within the normal limits using anti-AFP mouse monoclonal antibody. ([TA501785])



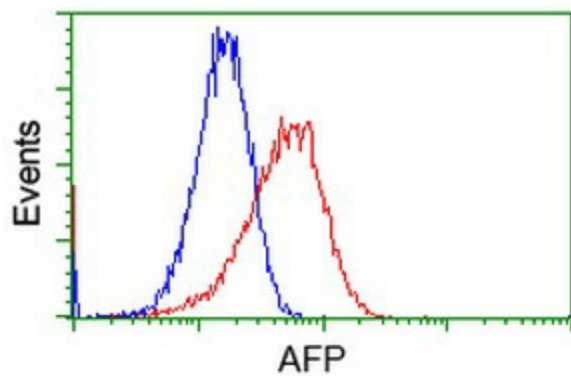
Immunohistochemical staining of paraffin-embedded Human liver tissue within the normal limits using anti-AFP mouse monoclonal antibody. ([TA501785])



Immunohistochemical staining of paraffin-embedded Human prostate tissue within the normal limits using anti-AFP mouse monoclonal antibody. ([TA501785])



HEK293T cells transfected with either [RC206622] overexpress plasmid (Red) or empty vector control plasmid (Blue) were immunostained by anti-AFP antibody ([TA501785]), and then analyzed by flow cytometry.



Flow cytometric Analysis of HeLa cells, using anti-AFP antibody ([TA501785]), (Red), compared to a nonspecific negative control antibody (TA50011), (Blue).