

Product datasheet for **TA501773AM**

HSPA6 Mouse Monoclonal Antibody (Biotin conjugated) [Clone ID: OTI1H3]

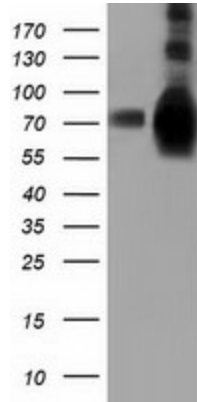
Product data:

Product Type:	Primary Antibodies
Clone Name:	OTI1H3
Applications:	FC, IF, WB
Recommended Dilution:	WB 1:500~2000, IF 1:100, FLOW 1:100
Reactivity:	Human
Host:	Mouse
Isotype:	IgG2b
Clonality:	Monoclonal
Immunogen:	Full length human recombinant protein of human HSPA6 (NP_002146) produced in HEK293T cell.
Formulation:	PBS (pH 7.3) containing 1% BSA, 50% glycerol and 0.02% sodium azide.
Concentration:	0.5 mg/ml
Purification:	Purified from mouse ascites fluids or tissue culture supernatant by affinity chromatography (protein A/G)
Conjugation:	Biotin
Storage:	Store at -20°C as received.
Stability:	Stable for 12 months from date of receipt.
Predicted Protein Size:	70.8 kDa
Gene Name:	heat shock protein family A (Hsp70) member 6
Database Link:	NP_002146 Entrez Gene 3310 Human P17066
Synonyms:	heat shock 70kDa protein 6 (HSP70B'); heat shock 70kD protein 6 (HSP70B')
Protein Pathways:	Antigen processing and presentation, Endocytosis, MAPK signaling pathway, Spliceosome

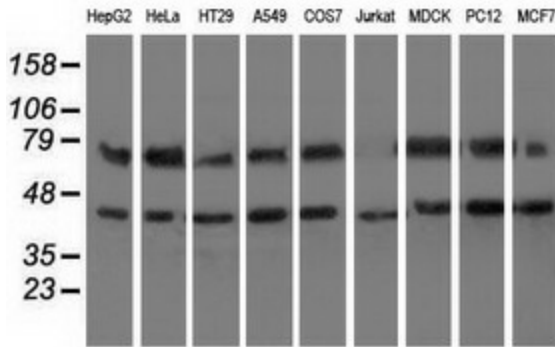


[View online »](#)

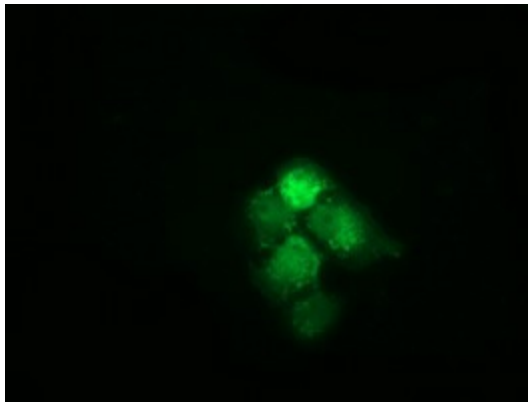
Product images:



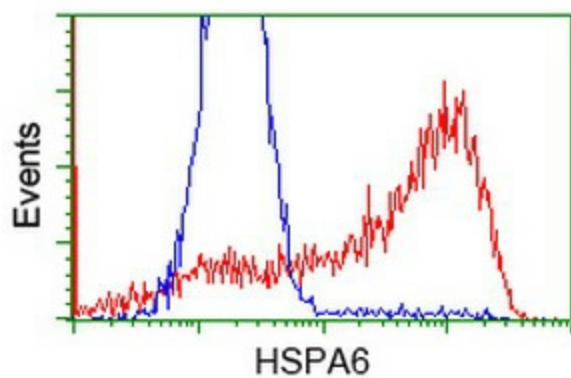
HEK293T cells were transfected with the pCMV6-ENTRY control (Left lane) or pCMV6-ENTRY HSPA6 ([RC207795], Right lane) cDNA for 48 hrs and lysed. Equivalent amounts of cell lysates (5 ug per lane) were separated by SDS-PAGE and immunoblotted with anti-HSPA6. Positive lysates [LY419498] (100ug) and [LC419498] (20ug) can be purchased separately from OriGene.



Western blot analysis of extracts (35ug) from 9 different cell lines by using anti-HSPA6 monoclonal antibody.



Anti-HSPA6 mouse monoclonal antibody ([TA501773]) immunofluorescent staining of COS7 cells transiently transfected by pCMV6-ENTRY HSPA6 ([RC207795]).



HEK293T cells transfected with either [RC207795] overexpress plasmid (Red) or empty vector control plasmid (Blue) were immunostained by anti-HSPA6 antibody ([TA501773]), and then analyzed by flow cytometry.