

## Product datasheet for **TA501769S**

### **RND1 Mouse Monoclonal Antibody [Clone ID: OTI4F12]**

#### **Product data:**

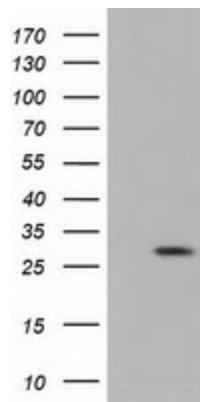
|                                |   |
|--------------------------------|---|
| <b>Product Type:</b>           | Primary Antibodies  |
| <b>Clone Name:</b>             | OTI4F12   |
| <b>Applications:</b>           | FC, IF, WB  |
| <b>Recommended Dilution:</b>   | WB 1:2000, IF 1:100, FLOW 1:100   |
| <b>Reactivity:</b>             | Human, Mouse, Rat   |
| <b>Host:</b>                   | Mouse   |
| <b>Isotype:</b>                | IgG1  |
| <b>Clonality:</b>              | Monoclonal  |
| <b>Immunogen:</b>              | Full length human recombinant protein of human RND1 (NP_055285) produced in HEK293T cell.   |
| <b>Formulation:</b>            | PBS (pH 7.3) containing 1% BSA, 50% glycerol and 0.02% sodium azide.  |
| <b>Concentration:</b>          | 1 mg/ml   |
| <b>Purification:</b>           | Purified from mouse ascites fluids or tissue culture supernatant by affinity chromatography (protein A/G)   |
| <b>Conjugation:</b>            | Unconjugated  |
| <b>Storage:</b>                | Store at -20°C as received.   |
| <b>Stability:</b>              | Stable for 12 months from date of receipt.  |
| <b>Predicted Protein Size:</b> | 25.9 kDa  |
| <b>Gene Name:</b>              | Rho family GTPase 1   |
| <b>Database Link:</b>          | <a href="#">NP_055285</a><br><a href="#">Entrez Gene 27289 Human</a><br><a href="#">Q92730</a>  |
| <b>Background:</b>             | Members of the Rho GTPase family, such as RND1, regulate the organization of the actin cytoskeleton in response to extracellular growth factors (Nobes et al., 1998 [PubMed 9531558]). [supplied by OMIM] |
| <b>Synonyms:</b>               | ARHS; RHO6; RHOS  |
| <b>Protein Families:</b>       | Stem cell - Pluripotency  |



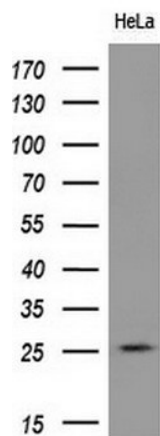
[View online »](#)

Protein Pathways: Axon guidance

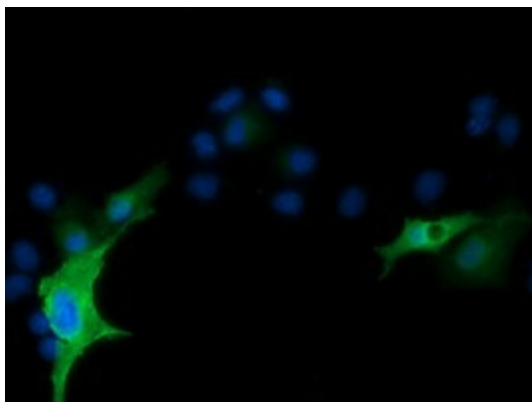
### Product images:



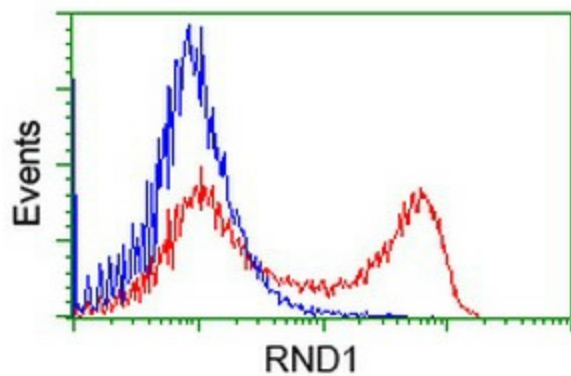
HEK293T cells were transfected with the pCMV6-ENTRY control (Left lane) or pCMV6-ENTRY RND1 ([RC205535], Right lane) cDNA for 48 hrs and lysed. Equivalent amounts of cell lysates (5 ug per lane) were separated by SDS-PAGE and immunoblotted with anti-RND1. Positive lysates [LY415252] (100ug) and [LC415252] (20ug) can be purchased separately from OriGene.



Western blot analysis of extracts (10ug) from 1 cell line by using anti-RND1 monoclonal antibody (1:200).



Western blot analysis of extracts (10ug) from HeLa cell line by using anti-RND1 monoclonal antibody (1:200).



HEK293T cells transfected with either [RC205535] overexpress plasmid (Red) or empty vector control plasmid (Blue) were immunostained by anti-RND1 antibody ([TA501769]), and then analyzed by flow cytometry.