

Product datasheet for **TA501768BM**

Bestrophin 3 (BEST3) Mouse Monoclonal Antibody (HRP conjugated) [Clone ID: OTI3B11]

Product data:

Product Type:	Primary Antibodies
Clone Name:	OTI3B11
Applications:	FC, IF, WB
Recommended Dilution:	WB 1:2000, IF 1:100, FLOW 1:100
Reactivity:	Human, Mouse, Rat
Host:	Mouse
Isotype:	IgG2a
Clonality:	Monoclonal
Immunogen:	Full length human recombinant protein of human BEST3 (NP_689652) produced in HEK293T cell.
Formulation:	PBS (pH 7.3) containing 1% BSA, 50% glycerol.
Concentration:	0.5 mg/ml
Purification:	Purified from mouse ascites fluids or tissue culture supernatant by affinity chromatography (protein A/G)
Conjugation:	HRP
Storage:	Store at -20°C as received.
Stability:	Stable for 12 months from date of receipt.
Predicted Protein Size:	50.8 kDa
Gene Name:	bestrophin 3
Database Link:	NP_689652 Entrez Gene 144453 Human Q8N1M1



[View online »](#)

Background:

BEST3 belongs to the bestrophin family of anion channels, which includes BEST1 (MIM 607854), the gene mutant in vitelliform macular dystrophy (VMD; MIM 153700), and 2 other BEST1-like genes, BEST2 (MIM 607335) and BEST4 (MIM 607336). Bestrophins are transmembrane (TM) proteins that share a homology region containing a high content of aromatic residues, including an invariant arg-phe-pro (RFP) motif. The bestrophin genes share a conserved gene structure, with almost identical sizes of the 8 RFP-TM domain-encoding exons and highly conserved exon-intron boundaries. Each of the 4 bestrophin genes has a unique 3-prime end of variable length (Stohr et al., 2002 [PubMed 12032738]; Tsunenari et al., 2003 [PubMed 12907679]). [supplied by OMIM]

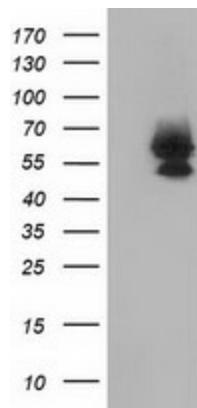
Synonyms:

VMD2L3

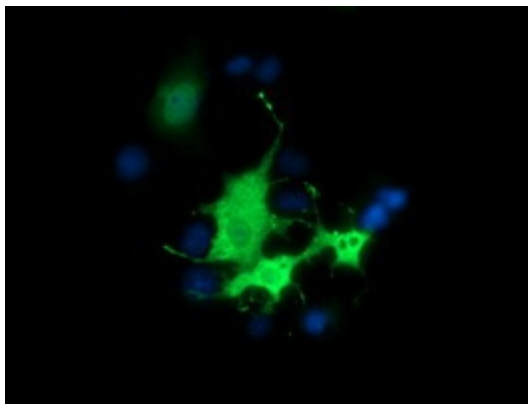
Protein Families:

Ion Channels: Other, Transmembrane

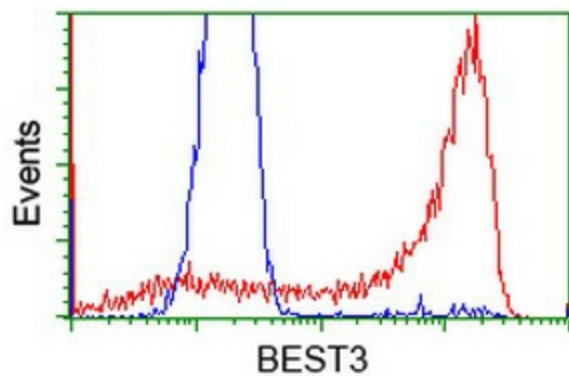
Product images:



HEK293T cells were transfected with the pCMV6-ENTRY control (Left lane) or pCMV6-ENTRY BEST3 ([RC218436], Right lane) cDNA for 48 hrs and lysed. Equivalent amounts of cell lysates (5 ug per lane) were separated by SDS-PAGE and immunoblotted with anti-BEST3. Positive lysates [LY407540] (100ug) and [LC407540] (20ug) can be purchased separately from OriGene.



Anti-BEST3 mouse monoclonal antibody ([TA501768]) immunofluorescent staining of COS7 cells transiently transfected by pCMV6-ENTRY BEST3 ([RC218436]).



HEK293T cells transfected with either [RC218436] overexpress plasmid (Red) or empty vector control plasmid (Blue) were immunostained by anti-BEST3 antibody ([TA501768]), and then analyzed by flow cytometry.