

Product datasheet for **TA501765BM**

NEK11 Mouse Monoclonal Antibody (HRP conjugated) [Clone ID: OTI5D9]

Product data:

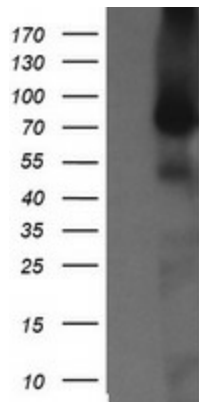
| | |
|-------------------------|--|
| Product Type: | Primary Antibodies |
| Clone Name: | OTI5D9 |
| Applications: | IF, IHC, WB |
| Recommended Dilution: | WB 1:2000, IHC 1:150, IF 1:100 |
| Reactivity: | Human |
| Host: | Mouse |
| Isotype: | IgG1 |
| Clonality: | Monoclonal |
| Immunogen: | Full length human recombinant protein of human NEK11(NP_079076) produced in HEK293T cell. |
| Formulation: | PBS (pH 7.3) containing 1% BSA, 50% glycerol. |
| Concentration: | 0.5 mg/ml |
| Purification: | Purified from mouse ascites fluids or tissue culture supernatant by affinity chromatography (protein A/G) |
| Conjugation: | HRP |
| Storage: | Store at -20°C as received. |
| Stability: | Stable for 12 months from date of receipt. |
| Predicted Protein Size: | 74 kDa |
| Gene Name: | NIMA related kinase 11 |
| Database Link: | NP_079076 Entrez Gene 79858 Human Q8NG66 |
| Background: | This gene encodes a member of the never in mitosis gene A family of kinases. The encoded protein localizes to the nucleoli, and may function with NEK2A in the S-phase checkpoint. The encoded protein appears to play roles in DNA replication and response to genotoxic stress. Alternatively spliced transcript variants have been described. |
| Synonyms: | FLJ23495 |



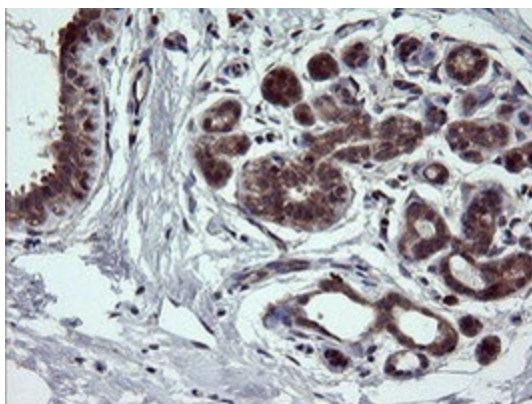
[View online »](#)

Protein Families: Druggable Genome, Protein Kinase

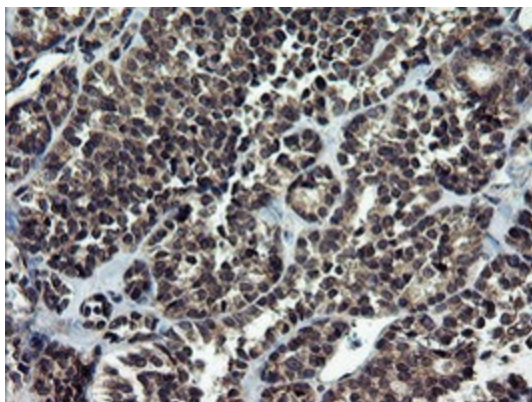
Product images:



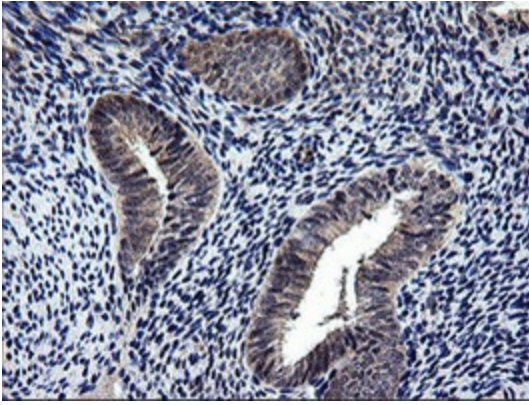
HEK293T cells were transfected with the pCMV6-ENTRY control (Cat# [PS100001], Left lane) or pCMV6-ENTRY NEK11 (Cat# [RC221953], Right lane) cDNA for 48 hrs and lysed. Equivalent amounts of cell lysates (5 ug per lane) were separated by SDS-PAGE and immunoblotted with anti-NEK11(Cat# [TA501765]). Positive lysates [LY411057] (100ug) and [LC411057] (20ug) can be purchased separately from OriGene.



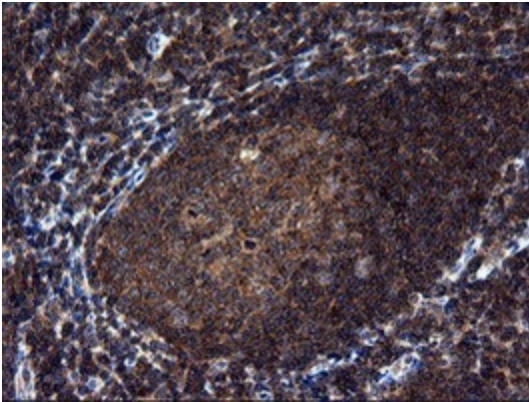
Immunohistochemical staining of paraffin-embedded Human breast tissue within the normal limits using anti-NEK11 mouse monoclonal antibody. (Heat-induced epitope retrieval by 10mM citric buffer, pH6.0, 100°C for 10min, [TA501765])



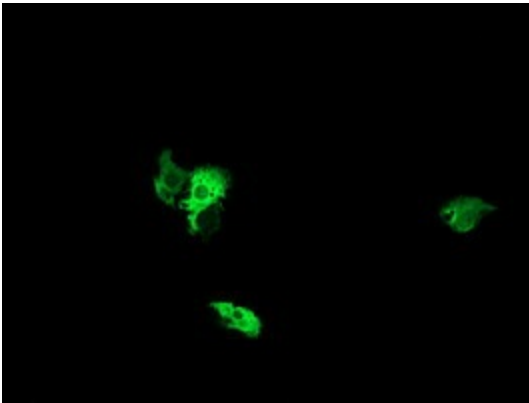
Immunohistochemical staining of paraffin-embedded Carcinoma of Human thyroid tissue using anti-NEK11 mouse monoclonal antibody. (Heat-induced epitope retrieval by 10mM citric buffer, pH6.0, 100°C for 10min, [TA501765])



Immunohistochemical staining of paraffin-embedded Human endometrium tissue within the normal limits using anti-NEK11 mouse monoclonal antibody. (Heat-induced epitope retrieval by 10mM citric buffer, pH6.0, 100°C for 10min, [TA501765])



Immunohistochemical staining of paraffin-embedded Human tonsil within the normal limits using anti-NEK11 mouse monoclonal antibody. (Heat-induced epitope retrieval by 10mM citric buffer, pH6.0, 100°C for 10min, [TA501765])



Anti-NEK11 mouse monoclonal antibody ([TA501765]) immunofluorescent staining of COS7 cells transiently transfected by pCMV6-ENTRY NEK11 ([RC221953]).