

## Product datasheet for **TA501765AM**

### NEK11 Mouse Monoclonal Antibody (Biotin conjugated) [Clone ID: OTI5D9]

#### Product data:

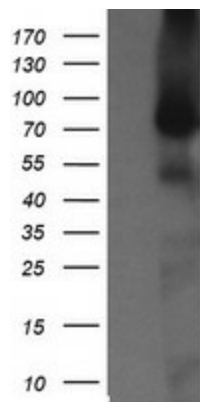
Product Type:	Primary Antibodies
Clone Name:	OTI5D9
Applications:	IF, IHC, WB
Recommended Dilution:	WB 1:2000, IHC 1:150, IF 1:100
Reactivity:	Human
Host:	Mouse
Isotype:	IgG1
Clonality:	Monoclonal
Immunogen:	Full length human recombinant protein of human NEK11(NP_079076) produced in HEK293T cell.
Formulation:	PBS (pH 7.3) containing 1% BSA, 50% glycerol and 0.02% sodium azide.
Concentration:	0.5 mg/ml
Purification:	Purified from mouse ascites fluids or tissue culture supernatant by affinity chromatography (protein A/G)
Conjugation:	Biotin
Storage:	Store at -20°C as received.
Stability:	Stable for 12 months from date of receipt.
Predicted Protein Size:	74 kDa
Gene Name:	NIMA related kinase 11
Database Link:	<a href="#">NP_079076</a> <a href="#">Entrez Gene 79858 Human</a> <a href="#">Q8NG66</a>
Background:	This gene encodes a member of the never in mitosis gene A family of kinases. The encoded protein localizes to the nucleoli, and may function with NEK2A in the S-phase checkpoint. The encoded protein appears to play roles in DNA replication and response to genotoxic stress. Alternatively spliced transcript variants have been described.
Synonyms:	FLJ23495



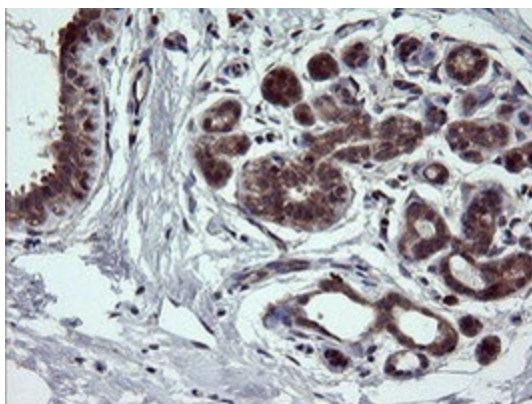
[View online »](#)

Protein Families: Druggable Genome, Protein Kinase

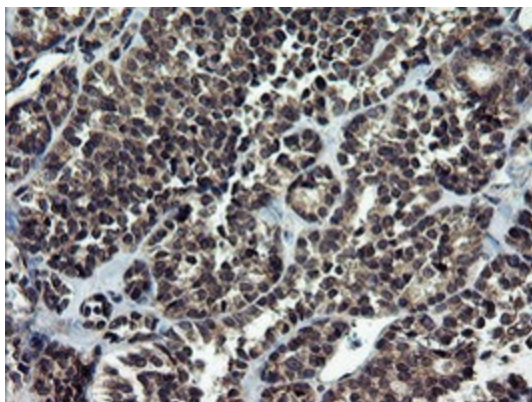
**Product images:**



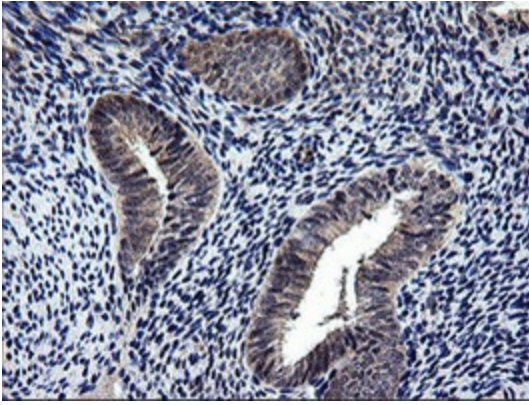
HEK293T cells were transfected with the pCMV6-ENTRY control (Cat# [PS100001], Left lane) or pCMV6-ENTRY NEK11 (Cat# [RC221953], Right lane) cDNA for 48 hrs and lysed. Equivalent amounts of cell lysates (5 ug per lane) were separated by SDS-PAGE and immunoblotted with anti-NEK11(Cat# [TA501765]). Positive lysates [LY411057] (100ug) and [LC411057] (20ug) can be purchased separately from OriGene.



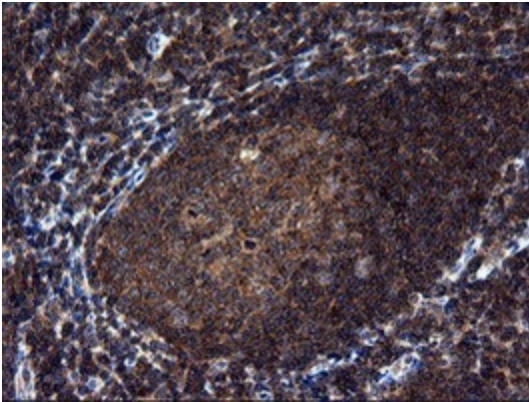
Immunohistochemical staining of paraffin-embedded Human breast tissue within the normal limits using anti-NEK11 mouse monoclonal antibody. (Heat-induced epitope retrieval by 10mM citric buffer, pH6.0, 100°C for 10min, [TA501765])



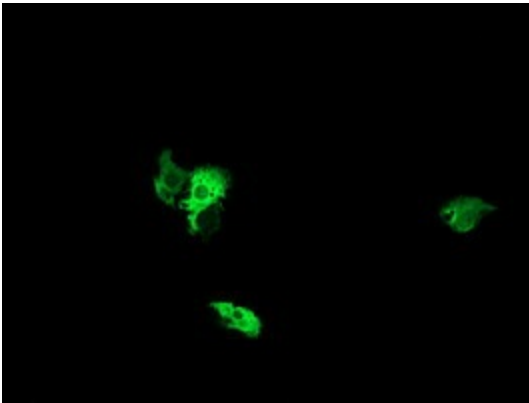
Immunohistochemical staining of paraffin-embedded Carcinoma of Human thyroid tissue using anti-NEK11 mouse monoclonal antibody. (Heat-induced epitope retrieval by 10mM citric buffer, pH6.0, 100°C for 10min, [TA501765])



Immunohistochemical staining of paraffin-embedded Human endometrium tissue within the normal limits using anti-NEK11 mouse monoclonal antibody. (Heat-induced epitope retrieval by 10mM citric buffer, pH6.0, 100°C for 10min, [TA501765])



Immunohistochemical staining of paraffin-embedded Human tonsil within the normal limits using anti-NEK11 mouse monoclonal antibody. (Heat-induced epitope retrieval by 10mM citric buffer, pH6.0, 100°C for 10min, [TA501765])



Anti-NEK11 mouse monoclonal antibody ([TA501765]) immunofluorescent staining of COS7 cells transiently transfected by pCMV6-ENTRY NEK11 ([RC221953]).