

## Product datasheet for **TA501760M**

### PIK3AP1 Mouse Monoclonal Antibody [Clone ID: OTI7B12]

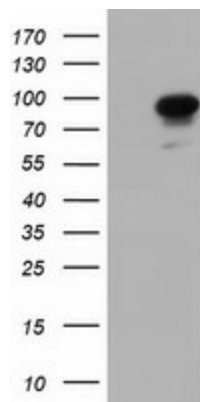
#### Product data:

Product Type:	Primary Antibodies
Clone Name:	OTI7B12
Applications:	FC, IF, IHC, WB
Recommended Dilution:	WB 1:2000, IHC 1:150, IF 1:100, FLOW 1:100
Reactivity:	Human, Mouse, Rat
Host:	Mouse
Isotype:	IgG1
Clonality:	Monoclonal
Immunogen:	Full length human recombinant protein of human PIK3AP1 (NP_689552) produced in HEK293T cell.
Formulation:	PBS (pH 7.3) containing 1% BSA, 50% glycerol and 0.02% sodium azide.
Concentration:	0.4 mg/ml
Purification:	Purified from mouse ascites fluids or tissue culture supernatant by affinity chromatography (protein A/G)
Conjugation:	Unconjugated
Storage:	Store at -20°C as received.
Stability:	Stable for 12 months from date of receipt.
Predicted Protein Size:	90.2 kDa
Gene Name:	phosphoinositide-3-kinase adaptor protein 1
Database Link:	<a href="#">NP_689522</a> <a href="#">Entrez Gene 294048 Rat</a> <a href="#">Entrez Gene 118788 Human</a> <a href="#">Q6ZUJ8</a>
Background:	Involved in the activation of phosphoinositide 3-kinase (PI3K) in B-cells and in natural killer (NK) cells. Couples B-cell antigen receptor (BCR) to PI3K activation by providing a docking site for the PI3K subunit PIK3R1, which contributes to B-cell development. Seems to have a complementary role with CD19 in PI3K activation (By similarity). May be involved in the survival of mature B cells via activation of REL (By similarity).

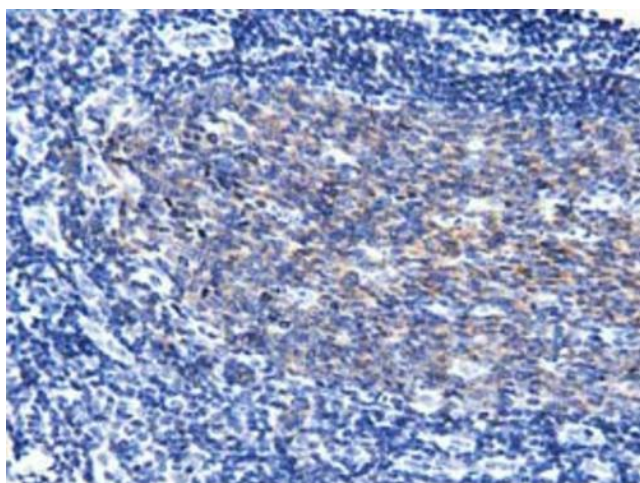

[View online »](#)

**Synonyms:** BCAP  
**Protein Families:** Druggable Genome  
**Protein Pathways:** B cell receptor signaling pathway

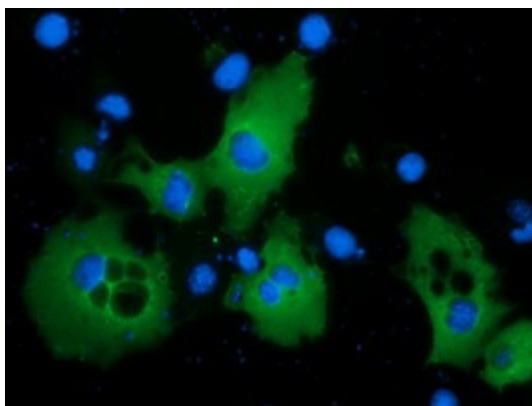
### Product images:



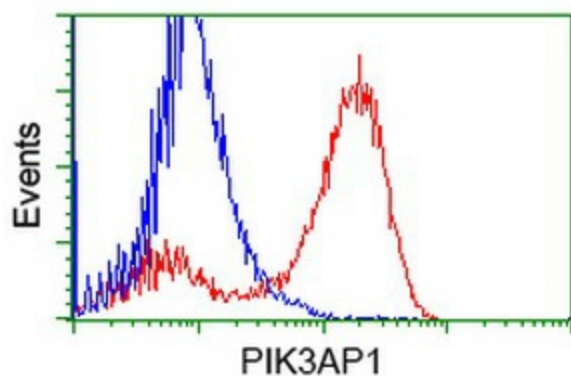
HEK293T cells were transfected with the pCMV6-ENTRY control (Left lane) or pCMV6-ENTRY PIK3AP1 ([RC214125], Right lane) cDNA for 48 hrs and lysed. Equivalent amounts of cell lysates (5 ug per lane) were separated by SDS-PAGE and immunoblotted with anti-PIK3AP1. Positive lysates [LY403461] (100ug) and [LC403461] (20ug) can be purchased separately from OriGene.



Immunohistochemical staining of paraffin-embedded Human lymph node tissue within the normal limits using anti-PIK3AP1 mouse monoclonal antibody. Heat-induced epitope retrieval by EDTA solution buffer pH 8.0 at 120°C for 3 min.



Anti-PIK3AP1 mouse monoclonal antibody ([TA501760]) immunofluorescent staining of COS7 cells transiently transfected by pCMV6-ENTRY PIK3AP1 ([RC214125]).



HEK293T cells transfected with either [RC214125] overexpress plasmid (Red) or empty vector control plasmid (Blue) were immunostained by anti-PIK3AP1 antibody ([TA501760]), and then analyzed by flow cytometry.