

Product datasheet for **TA501757**

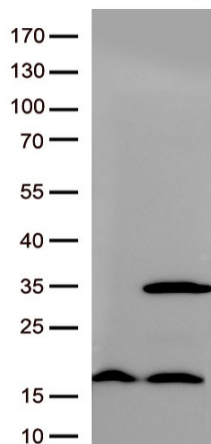
RIT2 Mouse Monoclonal Antibody [Clone ID: OTI3F4]

Product data:

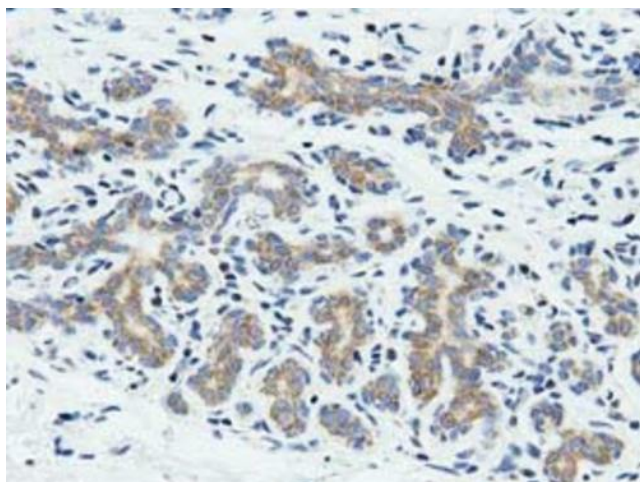
| | |
|-------------------------|---|
| Product Type: | Primary Antibodies |
| Clone Name: | OTI3F4 |
| Applications: | FC, IHC, WB |
| Recommended Dilution: | WB 1:500, IHC 1:150, FLOW 1:100 |
| Reactivity: | Human, Dog, Rat, Monkey, Mouse |
| Host: | Mouse |
| Isotype: | IgG2a |
| Clonality: | Monoclonal |
| Immunogen: | Full length human recombinant protein of human RIT2 (NP_002921) produced in HEK293T cell. |
| Formulation: | PBS (pH 7.3) containing 1% BSA, 50% glycerol and 0.02% sodium azide. |
| Concentration: | 0.69 mg/ml |
| Purification: | Purified from mouse ascites fluids or tissue culture supernatant by affinity chromatography (protein A/G) |
| Conjugation: | Unconjugated |
| Storage: | Store at -20°C as received. |
| Stability: | Stable for 12 months from date of receipt. |
| Predicted Protein Size: | 24.5 kDa |
| Gene Name: | Ras like without CAAX 2 |
| Database Link: | NP_002921 Entrez Gene 19762 Mouse Entrez Gene 291713 Rat Entrez Gene 490475 Dog Entrez Gene 694050 Monkey Entrez Gene 6014 Human Q99578 |
| Background: | RIN belongs to the RAS (HRAS; MIM 190020) superfamily of small GTPases (Shao et al., 1999 [PubMed 10545207]). [supplied by OMIM] |
| Synonyms: | RIBA; RIN; ROC2 |



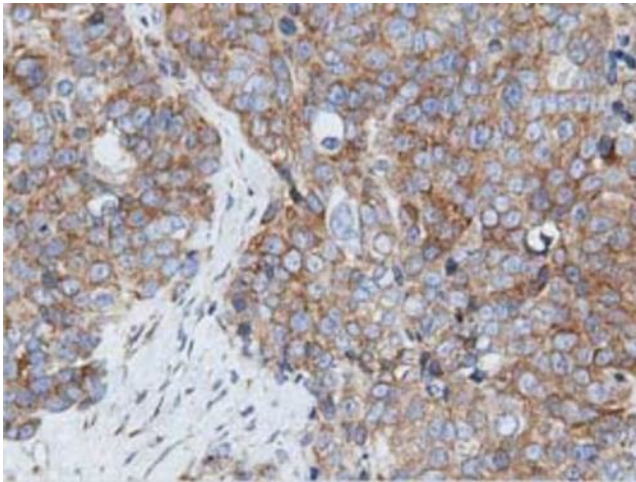
[View online »](#)

Product images:

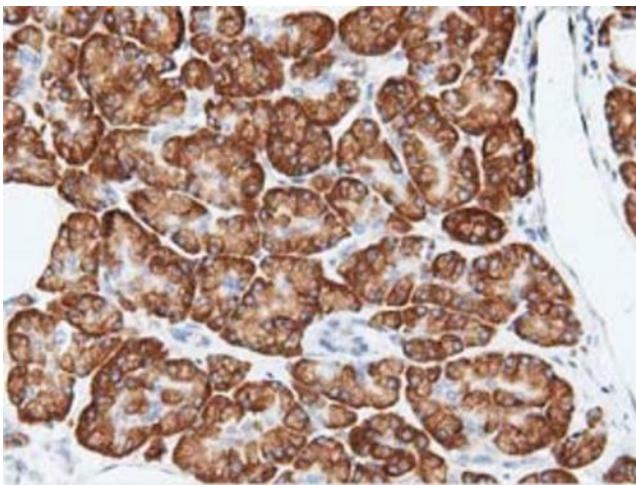
HEK293T cells were transfected with the pCMV6-ENTRY control (Left lane) or pCMV6-ENTRY RIT2 ([RC205367], Right lane) cDNA for 48 hrs and lysed. Equivalent amounts of cell lysates (5 ug per lane) were separated by SDS-PAGE and immunoblotted with anti-RIT2.(1:500) This antibody recognizes a nonspecific band around 20KD



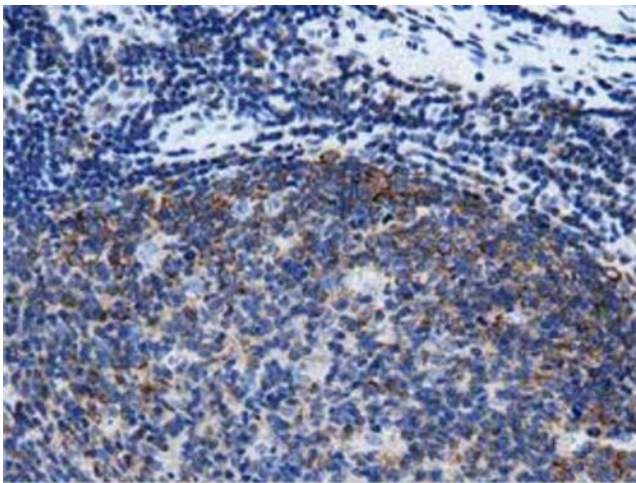
Immunohistochemical staining of paraffin-embedded Human breast tissue within the normal limits using anti-RIT2 mouse monoclonal antibody. Heat-induced epitope retrieval by EDTA solution buffer pH 8.0 at 120°C for 3 min.



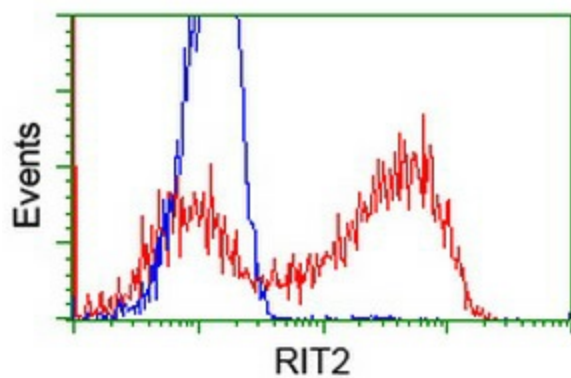
Immunohistochemical staining of paraffin-embedded Adenocarcinoma of Human ovary tissue using anti-RIT2 mouse monoclonal antibody. Heat-induced epitope retrieval by EDTA solution buffer pH 8.0 at 120°C for 3 min.



Immunohistochemical staining of paraffin-embedded Human pancreas tissue within the normal limits using anti-RIT2 mouse monoclonal antibody. Heat-induced epitope retrieval by EDTA solution buffer pH 8.0 at 120°C for 3 min.



Immunohistochemical staining of paraffin-embedded Human lymph node tissue within the normal limits using anti-RIT2 mouse monoclonal antibody. Heat-induced epitope retrieval by EDTA solution buffer pH 8.0 at 120°C for 3 min.



HEK293T cells transfected with either [RC205367] overexpress plasmid (Red) or empty vector control plasmid (Blue) were immunostained by anti-RIT2 antibody (TA501757), and then analyzed by flow cytometry.