

Product datasheet for **TA501755S**

ADI1 Mouse Monoclonal Antibody [Clone ID: OTI3H6]

Product data:

Product Type:	Primary Antibodies
Clone Name:	OTI3H6
Applications:	FC, IF, WB
Recommended Dilution:	WB 1:500, IF 1:100, FLOW 1:100
Reactivity:	Human
Host:	Mouse
Isotype:	IgG1
Clonality:	Monoclonal
Immunogen:	Full length human recombinant protein of human ADI1 (NP_060739) produced in HEK293T cell.
Formulation:	PBS (pH 7.3) containing 1% BSA, 50% glycerol and 0.02% sodium azide.
Concentration:	0.47 mg/ml
Purification:	Purified from mouse ascites fluids or tissue culture supernatant by affinity chromatography (protein A/G)
Conjugation:	Unconjugated
Storage:	Store at -20°C as received.
Stability:	Stable for 12 months from date of receipt.
Predicted Protein Size:	21.3 kDa
Gene Name:	acireductone dioxygenase 1
Database Link:	NP_060739 Entrez Gene 55256 Human Q9BV57
Background:	This gene encodes an enzyme that belongs to the aci-reductone dioxygenase family of metal-binding enzymes, which are involved in methionine salvage. This enzyme may regulate mRNA processing in the nucleus, and may carry out different functions depending on its localization. Related pseudogenes have been defined on chromosomes 8 and 20. [provided by RefSeq]. COMPLETENESS: complete on the 3' end.

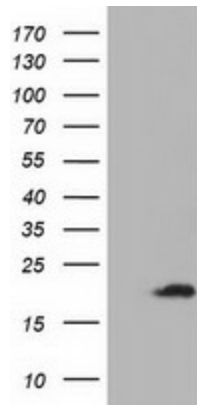


[View online »](#)

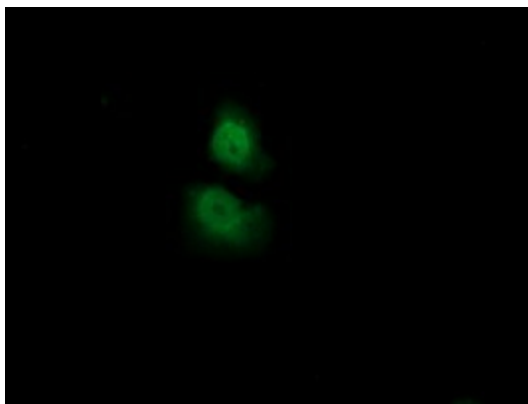
Synonyms: APL1; ARD; Fe-ARD; HMFT1638; MTCBP1; mtnD; Ni-ARD; SIPL

Protein Pathways: Cysteine and methionine metabolism, Metabolic pathways

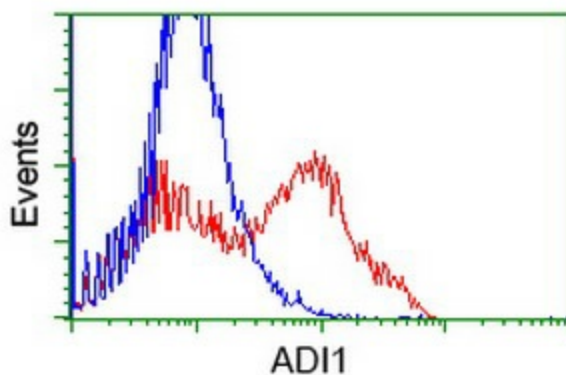
Product images:



HEK293T cells were transfected with the pCMV6-ENTRY control (Left lane) or pCMV6-ENTRY ADI1 ([RC200115], Right lane) cDNA for 48 hrs and lysed. Equivalent amounts of cell lysates (5 ug per lane) were separated by SDS-PAGE and immunoblotted with anti-ADI1. Positive lysates [LY402662] (100ug) and [LC402662] (20ug) can be purchased separately from OriGene.



Anti-ADI1 mouse monoclonal antibody ([TA501755]) immunofluorescent staining of COS7 cells transiently transfected by pCMV6-ENTRY ADI1 ([RC200115]).



HEK293T cells transfected with either [RC200115] overexpress plasmid (Red) or empty vector control plasmid (Blue) were immunostained by anti-ADI1 antibody ([TA501755]), and then analyzed by flow cytometry.