

Product datasheet for **TA501745S**

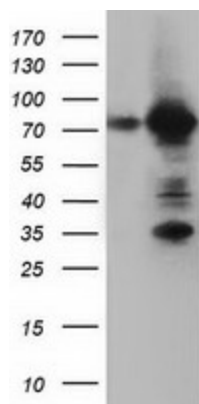
ARHGAP25 Mouse Monoclonal Antibody [Clone ID: OTI12G4]

Product data:

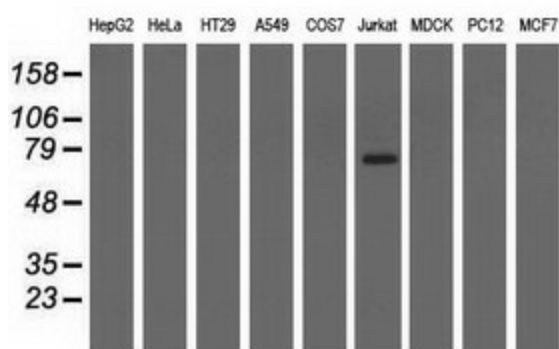
Product Type:	Primary Antibodies
Clone Name:	OTI12G4
Applications:	FC, IF, IHC, WB
Recommended Dilution:	WB 1:500~2000, IHC 1:150, IF 1:100, FLOW 1:100
Reactivity:	Human, Mouse, Rat
Host:	Mouse
Isotype:	IgG1
Clonality:	Monoclonal
Immunogen:	Full length human recombinant protein of human ARHGAP25 (NP_055697) produced in HEK293T cell.
Formulation:	PBS (pH 7.3) containing 1% BSA, 50% glycerol and 0.02% sodium azide.
Concentration:	0.71 mg/ml
Purification:	Purified from mouse ascites fluids or tissue culture supernatant by affinity chromatography (protein A/G)
Conjugation:	Unconjugated
Storage:	Store at -20°C as received.
Stability:	Stable for 12 months from date of receipt.
Predicted Protein Size:	72.3 kDa
Gene Name:	Rho GTPase activating protein 25
Database Link:	NP_055697 Entrez Gene 232201 MouseEntrez Gene 500246 RatEntrez Gene 9938 Human P42331
Background:	ARHGAPs, such as ARHGAP25, encode negative regulators of Rho GTPases (see ARHA; MIM 165390), which are implicated in actin remodeling, cell polarity, and cell migration (Katoh and Katoh, 2004 [PubMed 15254788]). [supplied by OMIM]
Synonyms:	HEL-S-308; KAIA0053



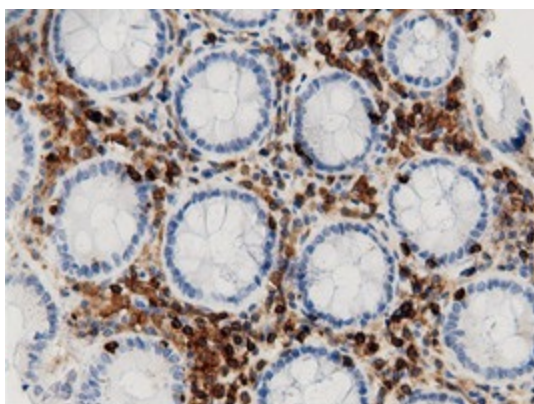
[View online »](#)

Product images:


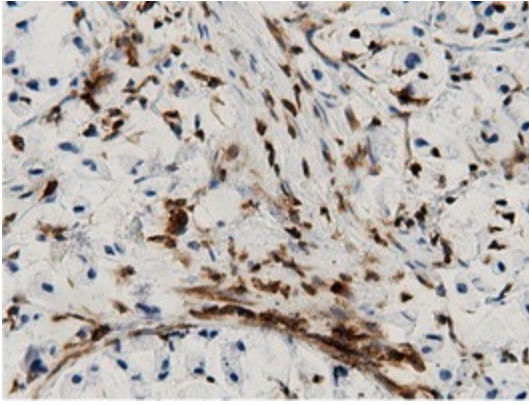
HEK293T cells were transfected with the pCMV6-ENTRY control (Cat# [PS100001], Left lane) or pCMV6-ENTRY ARHGAP25 (Cat# [RC217414], Right lane) cDNA for 48 hrs and lysed. Equivalent amounts of cell lysates (5 ug per lane) were separated by SDS-PAGE and immunoblotted with anti-ARHGAP25 (Cat# [TA501745]). Positive lysates [LY402385] (100ug) and [LC402385] (20ug) can be purchased separately from OriGene.



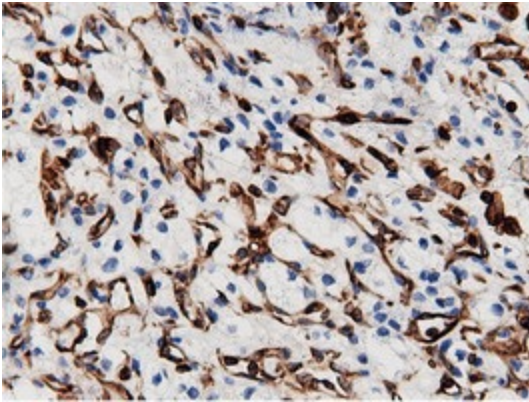
Western blot analysis of extracts (35ug) from 9 different cell lines by using anti-ARHGAP25 monoclonal antibody.



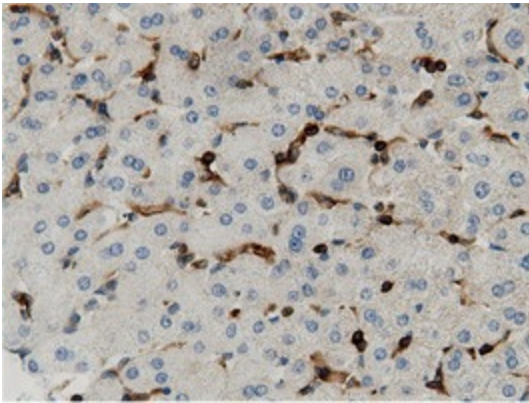
Immunohistochemical staining of paraffin-embedded Human colon tissue within the normal limits using anti-ARHGAP25 mouse monoclonal antibody. (Heat-induced epitope retrieval by 10mM citric buffer, pH6.0, 100°C for 10min, [TA501745])



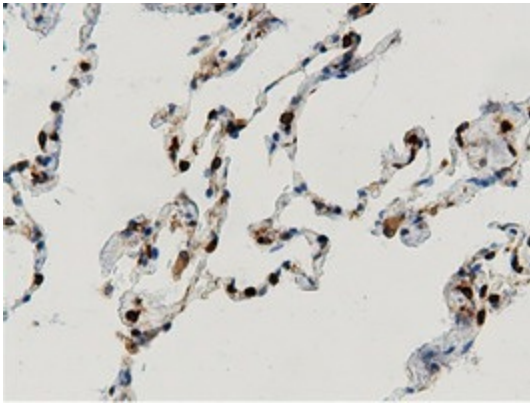
Immunohistochemical staining of paraffin-embedded Adenocarcinoma of Human colon tissue using anti-ARHGAP25 mouse monoclonal antibody. (Heat-induced epitope retrieval by 10mM citric buffer, pH6.0, 100°C for 10min, [TA501745])



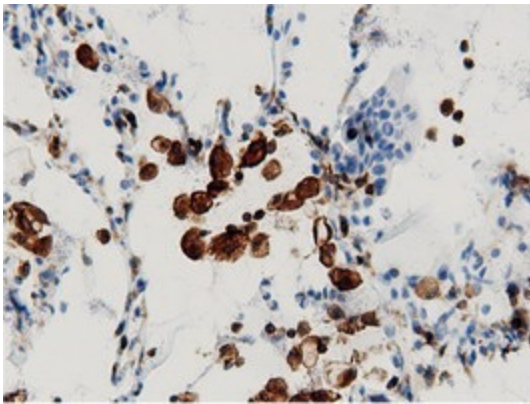
Immunohistochemical staining of paraffin-embedded Carcinoma of Human kidney tissue using anti-ARHGAP25 mouse monoclonal antibody. (Heat-induced epitope retrieval by 10mM citric buffer, pH6.0, 100°C for 10min, [TA501745])



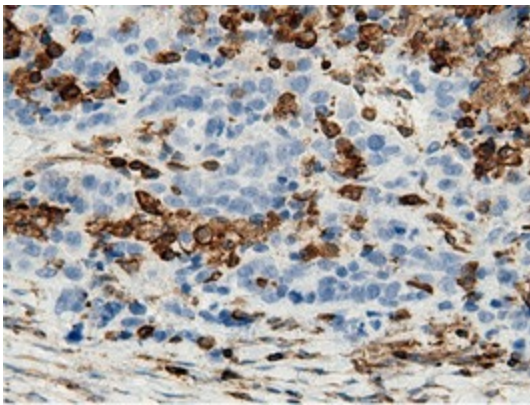
Immunohistochemical staining of paraffin-embedded Human liver tissue within the normal limits using anti-ARHGAP25 mouse monoclonal antibody. (Heat-induced epitope retrieval by 10mM citric buffer, pH6.0, 100°C for 10min, [TA501745])



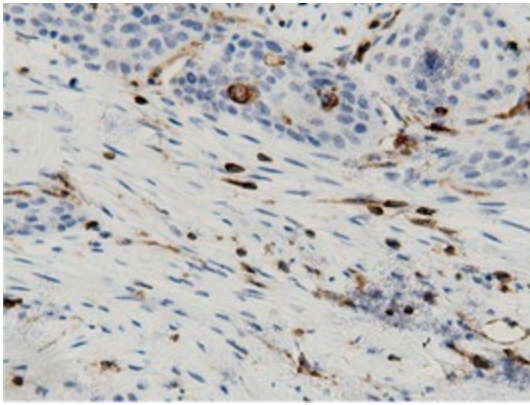
Immunohistochemical staining of paraffin-embedded Human lung tissue within the normal limits using anti-ARHGAP25 mouse monoclonal antibody. (Heat-induced epitope retrieval by 10mM citric buffer, pH6.0, 100°C for 10min, [TA501745])



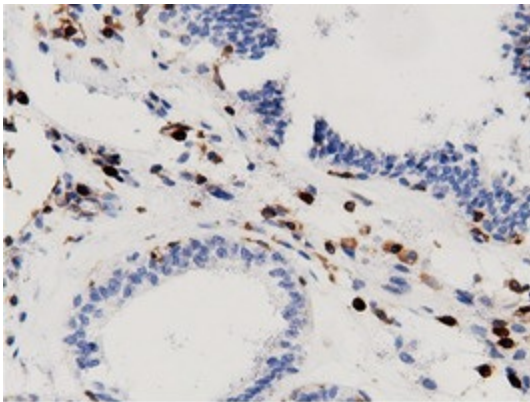
Immunohistochemical staining of paraffin-embedded Carcinoma of Human lung tissue using anti-ARHGAP25 mouse monoclonal antibody. (Heat-induced epitope retrieval by 10mM citric buffer, pH6.0, 100°C for 10min, [TA501745])



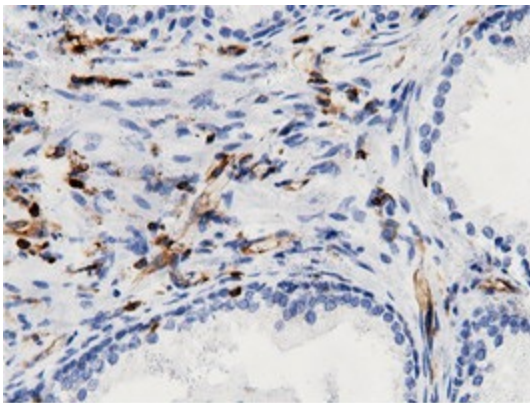
Immunohistochemical staining of paraffin-embedded Adenocarcinoma of Human ovary tissue using anti-ARHGAP25 mouse monoclonal antibody. (Heat-induced epitope retrieval by 10mM citric buffer, pH6.0, 100°C for 10min, [TA501745])



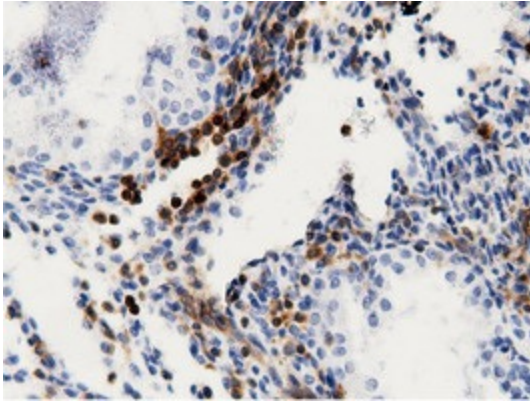
Immunohistochemical staining of paraffin-embedded Carcinoma of Human pancreas tissue using anti-ARHGAP25 mouse monoclonal antibody. (Heat-induced epitope retrieval by 10mM citric buffer, pH6.0, 100°C for 10min, [TA501745])



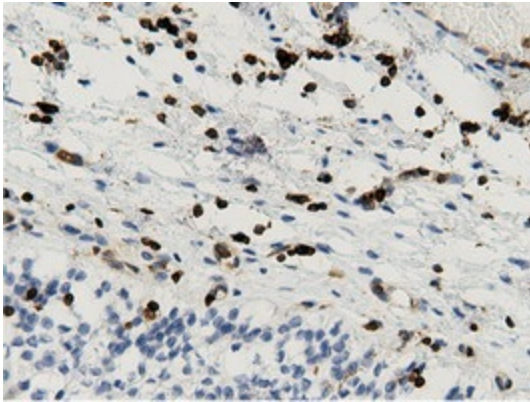
Immunohistochemical staining of paraffin-embedded Adenocarcinoma of Human endometrium tissue using anti-ARHGAP25 mouse monoclonal antibody. (Heat-induced epitope retrieval by 10mM citric buffer, pH6.0, 100°C for 10min, [TA501745])



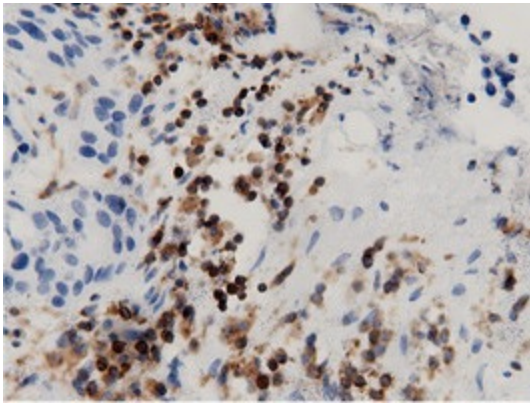
Immunohistochemical staining of paraffin-embedded Human prostate tissue within the normal limits using anti-ARHGAP25 mouse monoclonal antibody. (Heat-induced epitope retrieval by 10mM citric buffer, pH6.0, 100°C for 10min, [TA501745])



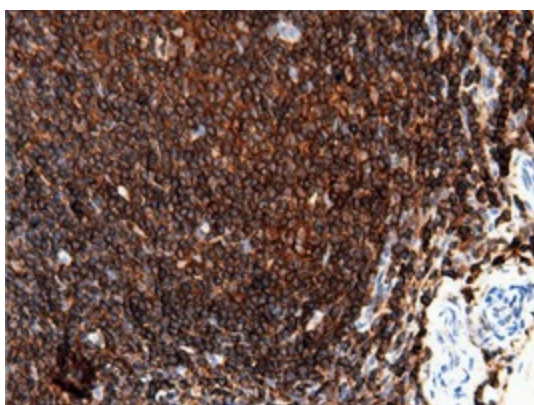
Immunohistochemical staining of paraffin-embedded Carcinoma of Human prostate tissue using anti-ARHGAP25 mouse monoclonal antibody. (Heat-induced epitope retrieval by 10mM citric buffer, pH6.0, 100°C for 10min, [TA501745])



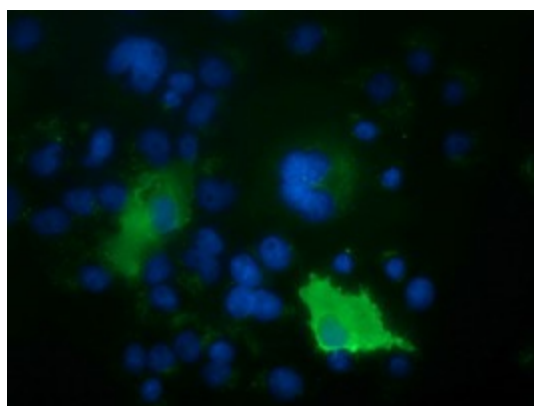
Immunohistochemical staining of paraffin-embedded Human bladder tissue within the normal limits using anti-ARHGAP25 mouse monoclonal antibody. (Heat-induced epitope retrieval by 10mM citric buffer, pH6.0, 100°C for 10min, [TA501745])



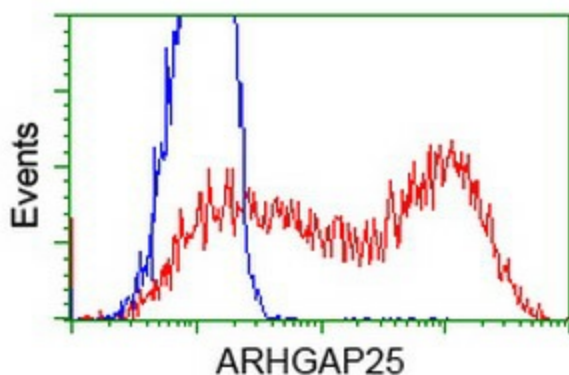
Immunohistochemical staining of paraffin-embedded Carcinoma of Human bladder tissue using anti-ARHGAP25 mouse monoclonal antibody. (Heat-induced epitope retrieval by 10mM citric buffer, pH6.0, 100°C for 10min, [TA501745])



Immunohistochemical staining of paraffin-embedded Human lymphoma tissue using anti-ARHGAP25 mouse monoclonal antibody. (Heat-induced epitope retrieval by 10mM citric buffer, pH6.0, 100°C for 10min, [TA501745])



Anti-ARHGAP25 mouse monoclonal antibody ([TA501745]) immunofluorescent staining of COS7 cells transiently transfected by pCMV6-ENTRY ARHGAP25 ([RC217414]).



HEK293T cells transfected with either [RC217414] overexpress plasmid (Red) or empty vector control plasmid (Blue) were immunostained by anti-ARHGAP25 antibody ([TA501745]), and then analyzed by flow cytometry.