

## Product datasheet for **TA501741M**

### **RBBP9 Mouse Monoclonal Antibody [Clone ID: OTI4G9]**

#### **Product data:**

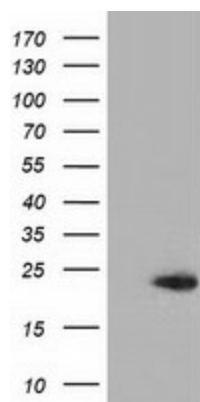
Product Type:	Primary Antibodies
Clone Name:	OTI4G9
Applications:	FC, IF, IHC, WB
Recommended Dilution:	WB 1:2000, IHC 1:150, IF 1:100, Flow: 1:100
Reactivity:	Human, Mouse, Rat
Host:	Mouse
Isotype:	IgG2a
Clonality:	Monoclonal
Immunogen:	Full length human recombinant protein of human RBBP9 (NP_006597) produced in HEK293T cell.
Formulation:	PBS (pH 7.3) containing 1% BSA, 50% glycerol and 0.02% sodium azide.
Concentration:	0.67 mg/ml
Purification:	Purified from mouse ascites fluids or tissue culture supernatant by affinity chromatography (protein A/G)
Conjugation:	Unconjugated
Storage:	Store at -20°C as received.
Stability:	Stable for 12 months from date of receipt.
Predicted Protein Size:	20.8 kDa
Gene Name:	RB binding protein 9, serine hydrolase
Database Link:	<a href="#">NP_006597</a> <a href="#">Entrez Gene 10741 Human</a> <a href="#">O75884</a>
Background:	The protein encoded by this gene is a retinoblastoma binding protein that may play a role in the regulation of cell proliferation and differentiation. Two alternatively spliced transcript variants of this gene with identical predicted protein products have been reported, one of which is a nonsense-mediated decay candidate. [provided by RefSeq]. COMPLETENESS: complete on the 3' end.



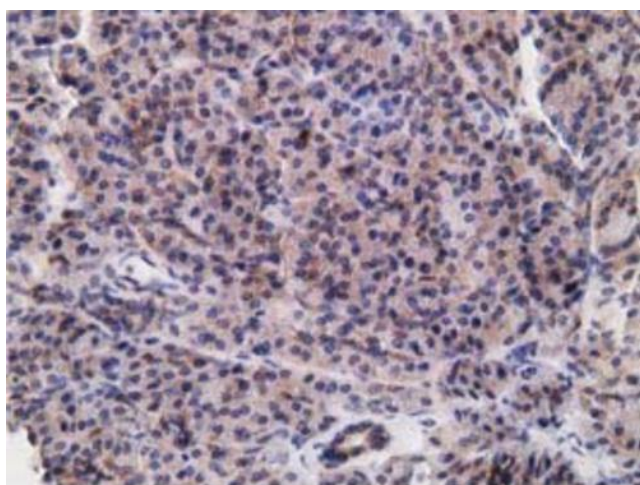
[View online »](#)

**Synonyms:** BOG; RBBP10

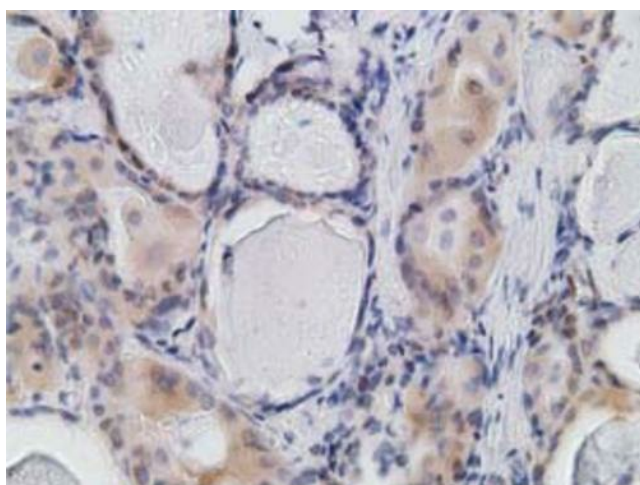
**Product images:**



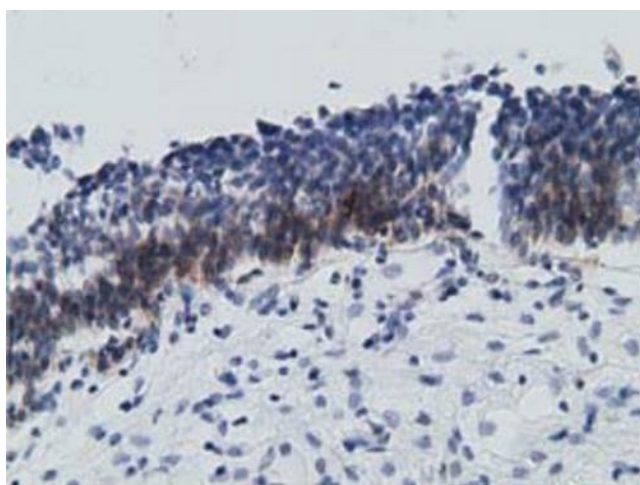
HEK293T cells were transfected with the pCMV6-ENTRY control (Cat# [PS100001], Left lane) or pCMV6-ENTRY RBBP9 (Cat# [RC202090], Right lane) cDNA for 48 hrs and lysed. Equivalent amounts of cell lysates (5 ug per lane) were separated by SDS-PAGE and immunoblotted with anti-RBBP9 (Cat# [TA501741]). Positive lysates [LY401976] (100ug) and [LC401976] (20ug) can be purchased separately from OriGene.



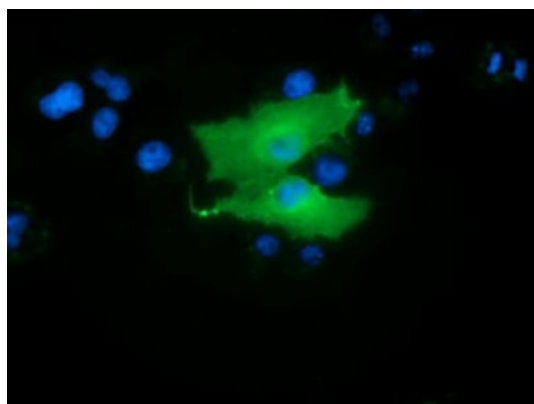
Immunohistochemical staining of paraffin-embedded Human pancreas tissue within the normal limits using anti-RBBP9 mouse monoclonal antibody. Heat-induced epitope retrieval by EDTA solution buffer pH 8.0 at 120°C for 3 min.



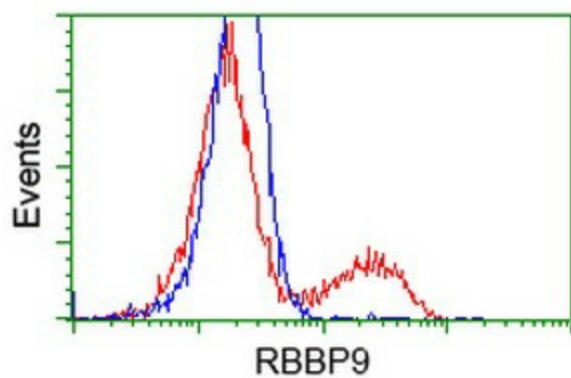
Immunohistochemical staining of paraffin-embedded Carcinoma of Human thyroid tissue using anti-RBBP9 mouse monoclonal antibody. Heat-induced epitope retrieval by EDTA solution buffer pH 8.0 at 120°C for 3 min.



Immunohistochemical staining of paraffin-embedded Human bladder tissue within the normal limits using anti-RBBP9 mouse monoclonal antibody. Heat-induced epitope retrieval by EDTA solution buffer pH 8.0 at 120°C for 3 min.



Anti-RBBP9 mouse monoclonal antibody ([TA501741]) immunofluorescent staining of COS7 cells transiently transfected by pCMV6-ENTRY RBBP9 ([RC202090]).



HEK293T cells transfected with either [RC202090] overexpress plasmid (Red) or empty vector control plasmid (Blue) were immunostained by anti-RBBP9 antibody ([TA501741]), and then analyzed by flow cytometry.