

## Product datasheet for **TA501741AM**

### **RBBP9 Mouse Monoclonal Antibody (Biotin conjugated) [Clone ID: OTI4G9]**

#### **Product data:**

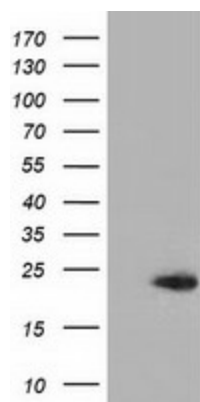
<b>Product Type:</b>	Primary Antibodies
<b>Clone Name:</b>	OTI4G9
<b>Applications:</b>	FC, IF, IHC, WB
<b>Recommended Dilution:</b>	WB 1:2000, IHC 1:150, IF 1:100, Flow: 1:100
<b>Reactivity:</b>	Human, Mouse, Rat
<b>Host:</b>	Mouse
<b>Isotype:</b>	IgG2a
<b>Clonality:</b>	Monoclonal
<b>Immunogen:</b>	Full length human recombinant protein of human RBBP9 (NP_006597) produced in HEK293T cell.
<b>Formulation:</b>	PBS (pH 7.3) containing 1% BSA, 50% glycerol and 0.02% sodium azide.
<b>Concentration:</b>	0.5 mg/ml
<b>Purification:</b>	Purified from mouse ascites fluids or tissue culture supernatant by affinity chromatography (protein A/G)
<b>Conjugation:</b>	Biotin
<b>Storage:</b>	Store at -20°C as received.
<b>Stability:</b>	Stable for 12 months from date of receipt.
<b>Predicted Protein Size:</b>	20.8 kDa
<b>Gene Name:</b>	RB binding protein 9, serine hydrolase
<b>Database Link:</b>	<a href="#">NP_006597</a> <a href="#">Entrez Gene 10741 Human</a> <a href="#">O75884</a>
<b>Background:</b>	The protein encoded by this gene is a retinoblastoma binding protein that may play a role in the regulation of cell proliferation and differentiation. Two alternatively spliced transcript variants of this gene with identical predicted protein products have been reported, one of which is a nonsense-mediated decay candidate. [provided by RefSeq]. COMPLETENESS: complete on the 3' end.



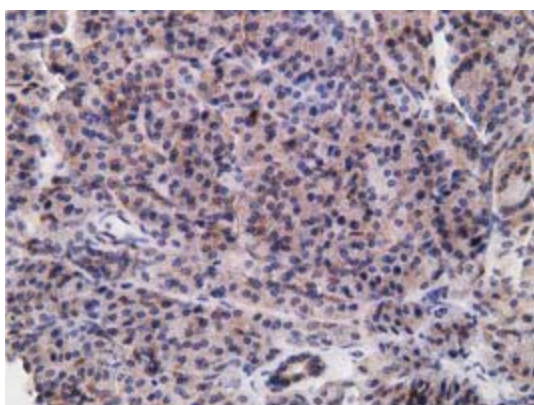
[View online »](#)

Synonyms: BOG; RBBP10

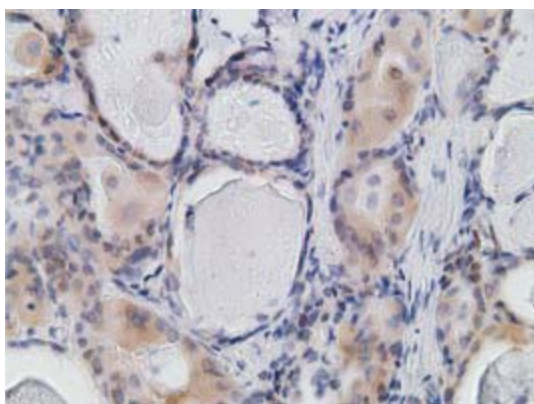
### Product images:



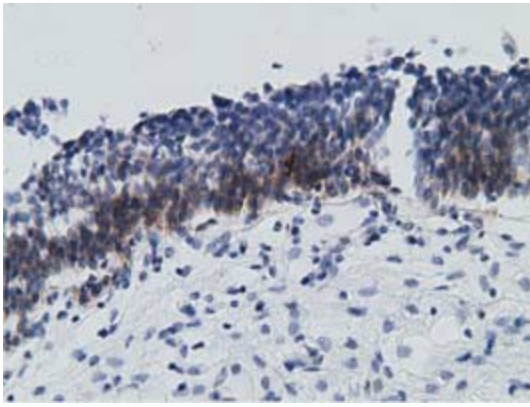
HEK293T cells were transfected with the pCMV6-ENTRY control (Cat# [PS100001], Left lane) or pCMV6-ENTRY RBBP9 (Cat# [RC202090], Right lane) cDNA for 48 hrs and lysed. Equivalent amounts of cell lysates (5 ug per lane) were separated by SDS-PAGE and immunoblotted with anti-RBBP9 (Cat# [TA501741]). Positive lysates [LY401976] (100ug) and [LC401976] (20ug) can be purchased separately from OriGene.



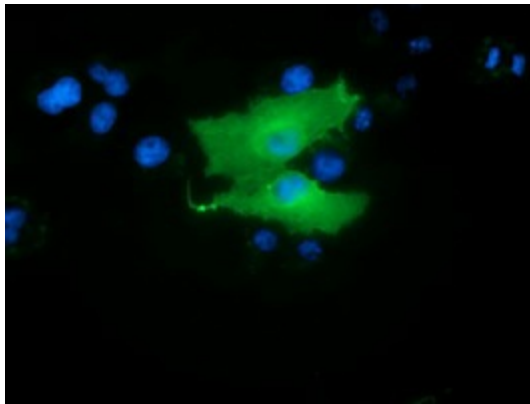
Immunohistochemical staining of paraffin-embedded Human pancreas tissue within the normal limits using anti-RBBP9 mouse monoclonal antibody. (Heat-induced epitope retrieval by 10mM citric buffer, pH6.0, 100°C for 10min, [TA501741], Dilution 1:50)



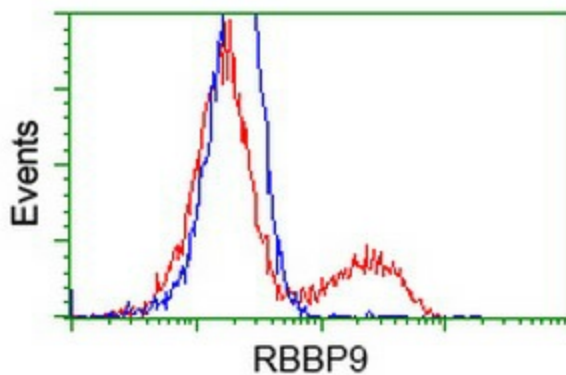
Immunohistochemical staining of paraffin-embedded Carcinoma of Human thyroid tissue using anti-RBBP9 mouse monoclonal antibody. (Heat-induced epitope retrieval by 10mM citric buffer, pH6.0, 100°C for 10min, [TA501741], Dilution 1:50)



Immunohistochemical staining of paraffin-embedded Human bladder tissue within the normal limits using anti-RBBP9 mouse monoclonal antibody. (Heat-induced epitope retrieval by 10mM citric buffer, pH6.0, 100°C for 10min, [TA501741], Dilution 1:50)



Anti-RBBP9 mouse monoclonal antibody ([TA501741]) immunofluorescent staining of COS7 cells transiently transfected by pCMV6-ENTRY RBBP9 ([RC202090]).



HEK293T cells transfected with either [RC202090] overexpress plasmid (Red) or empty vector control plasmid (Blue) were immunostained by anti-RBBP9 antibody ([TA501741]), and then analyzed by flow cytometry.