

## Product datasheet for **TA501740M**

### **RBBP9 Mouse Monoclonal Antibody [Clone ID: OTI4E1]**

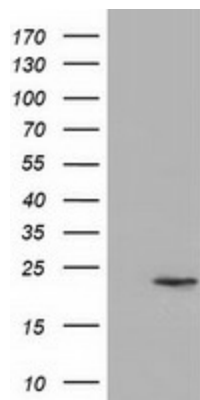
#### **Product data:**

Product Type:	Primary Antibodies
Clone Name:	OTI4E1
Applications:	IF, WB
Recommended Dilution:	WB 1:500, IF 1:100
Reactivity:	Human, Mouse, Rat
Host:	Mouse
Isotype:	IgG1
Clonality:	Monoclonal
Immunogen:	Full length human recombinant protein of human RBBP9 (NP_006597) produced in HEK293T cell.
Formulation:	PBS (pH 7.3) containing 1% BSA, 50% glycerol and 0.02% sodium azide.
Concentration:	1 mg/ml
Purification:	Purified from mouse ascites fluids or tissue culture supernatant by affinity chromatography (protein A/G)
Conjugation:	Unconjugated
Storage:	Store at -20°C as received.
Stability:	Stable for 12 months from date of receipt.
Predicted Protein Size:	20.8 kDa
Gene Name:	RB binding protein 9, serine hydrolase
Database Link:	<a href="#">NP_006597</a> <a href="#">Entrez Gene 10741 Human</a> <a href="#">O75884</a>
Background:	The protein encoded by this gene is a retinoblastoma binding protein that may play a role in the regulation of cell proliferation and differentiation. Two alternatively spliced transcript variants of this gene with identical predicted protein products have been reported, one of which is a nonsense-mediated decay candidate. [provided by RefSeq]. COMPLETENESS: complete on the 3' end.

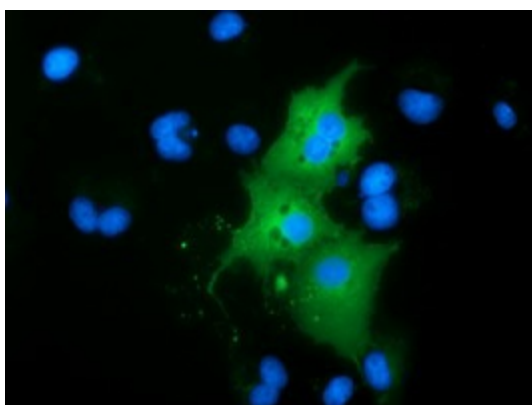
[View online »](#)

**Synonyms:** BOG; RBBP10

**Product images:**



HEK293T cells were transfected with the pCMV6-ENTRY control (Left lane) or pCMV6-ENTRY RBBP9 ([RC202090], Right lane) cDNA for 48 hrs and lysed. Equivalent amounts of cell lysates (5 ug per lane) were separated by SDS-PAGE and immunoblotted with anti-RBBP9. Positive lysates [LY401976] (100ug) and [LC401976] (20ug) can be purchased separately from OriGene.



Anti-RBBP9 mouse monoclonal antibody ([TA501740]) immunofluorescent staining of COS7 cells transiently transfected by pCMV6-ENTRY RBBP9 ([RC202090]).