

## Product datasheet for **TA501730AM**

### GGPS1 Mouse Monoclonal Antibody (Biotin conjugated) [Clone ID: OTI1C6]

#### Product data:

Product Type:	Primary Antibodies
Clone Name:	OTI1C6
Applications:	WB
Recommended Dilution:	WB 1:2000
Reactivity:	Human, Mouse, Rat
Host:	Mouse
Isotype:	IgG1
Clonality:	Monoclonal
Immunogen:	Full length human recombinant protein of human GGPS1 (NP_004828) produced in HEK293T cell.
Formulation:	PBS (pH 7.3) containing 1% BSA, 50% glycerol and 0.02% sodium azide.
Concentration:	0.5 mg/ml
Purification:	Purified from mouse ascites fluids or tissue culture supernatant by affinity chromatography (protein A/G)
Conjugation:	Biotin
Storage:	Store at -20°C as received.
Stability:	Stable for 12 months from date of receipt.
Predicted Protein Size:	34.7 kDa
Gene Name:	geranylgeranyl diphosphate synthase 1
Database Link:	<a href="#">NP_004828</a> <a href="#">Entrez Gene 14593 Mouse</a> <a href="#">Entrez Gene 291211 Rat</a> <a href="#">Entrez Gene 9453 Human</a> <a href="#">O95749</a>
Background:	This gene is a member of the prenyltransferase family and encodes a protein with geranylgeranyl diphosphate (GGPP) synthase activity. The enzyme catalyzes the synthesis of GGPP from farnesyl diphosphate and isopentenyl diphosphate. GGPP is an important molecule responsible for the C20-prenylation of proteins and for the regulation of a nuclear hormone receptor. Alternate transcriptional splice variants, encoding different isoforms, have been characterized. [provided by RefSeq]

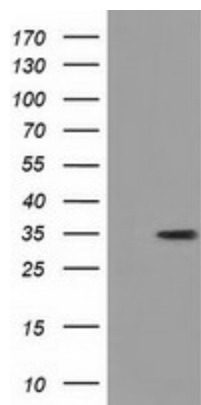


[View online »](#)

Synonyms: GGPPS; GGPPS1

Protein Pathways: Metabolic pathways, Terpenoid backbone biosynthesis

### Product images:



HEK293T cells were transfected with the pCMV6-ENTRY control (Left lane) or pCMV6-ENTRY GGPS1 ([RC202699], Right lane) cDNA for 48 hrs and lysed. Equivalent amounts of cell lysates (5 ug per lane) were separated by SDS-PAGE and immunoblotted with anti-GGPS1. Positive lysates [LY401517] (100ug) and [LC401517] (20ug) can be purchased separately from OriGene.