

## Product datasheet for **TA501720AM**

### **KIST (UHMK1) Mouse Monoclonal Antibody (Biotin conjugated) [Clone ID: OTI2H4]**

#### **Product data:**

<b>Product Type:</b>	Primary Antibodies
<b>Clone Name:</b>	OTI2H4
<b>Applications:</b>	FC, IF, IHC, WB
<b>Recommended Dilution:</b>	WB 1:500~2000, IHC 1:150, IF 1:100, FLOW 1:100
<b>Reactivity:</b>	Human, Mouse, Rat
<b>Host:</b>	Mouse
<b>Isotype:</b>	IgG2b
<b>Clonality:</b>	Monoclonal
<b>Immunogen:</b>	Full length human recombinant protein of human UHMK1 (NP_787062) produced in HEK293T cell.
<b>Formulation:</b>	PBS (pH 7.3) containing 1% BSA, 50% glycerol and 0.02% sodium azide.
<b>Concentration:</b>	0.5 mg/ml
<b>Purification:</b>	Purified from mouse ascites fluids or tissue culture supernatant by affinity chromatography (protein A/G)
<b>Conjugation:</b>	Biotin
<b>Storage:</b>	Store at -20°C as received.
<b>Stability:</b>	Stable for 12 months from date of receipt.
<b>Predicted Protein Size:</b>	46.4 kDa
<b>Gene Name:</b>	U2AF homology motif kinase 1
<b>Database Link:</b>	<a href="#">NP_787062</a> <a href="#">Entrez Gene 246332 Rat</a> <a href="#">Entrez Gene 127933 Human</a> <a href="#">Q8TAS1</a>
<b>Background:</b>	The gene encodes a serine/threonine protein kinase that promotes cell cycle progression through G1 by phosphorylation of the cyclin-dependent kinase inhibitor 1B (p27Kip1), which causes nuclear export and degradation. The encoded protein is also thought to function in the adult nervous system and the gene has been associated with schizophrenia. Alternative splicing results in multiple transcript variants. [provided by RefSeq]

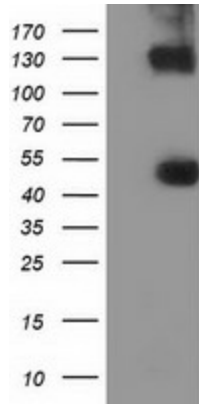


[View online »](#)

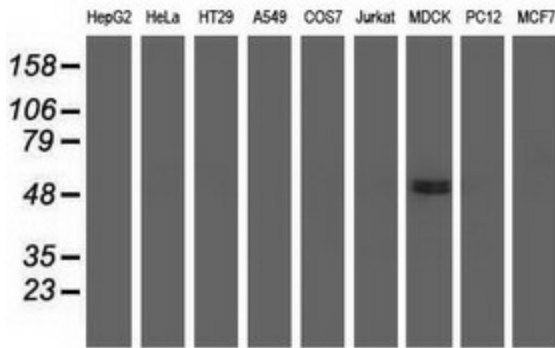
**Synonyms:** KIS; KIST; P-CIP2

**Protein Families:** Druggable Genome, Protein Kinase

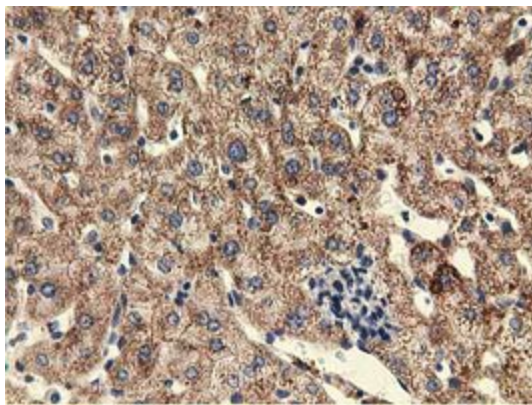
**Product images:**



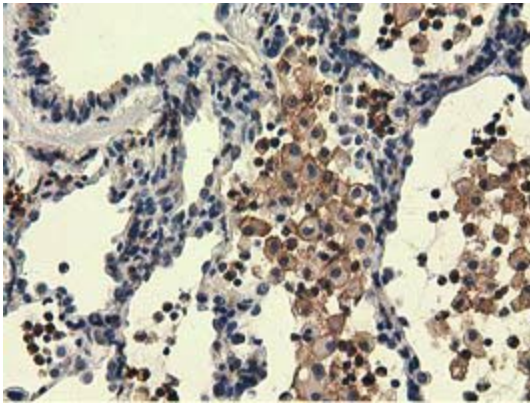
HEK293T cells were transfected with the pCMV6-ENTRY control (Cat# [PS100001], Left lane) or pCMV6-ENTRY UHK1 (Cat# [RC214962], Right lane) cDNA for 48 hrs and lysed. Equivalent amounts of cell lysates (5 ug per lane) were separated by SDS-PAGE and immunoblotted with anti-UHK1(Cat# [TA501720]). Positive lysates [LY406187] (100ug) and [LC406187] (20ug) can be purchased separately from OriGene.



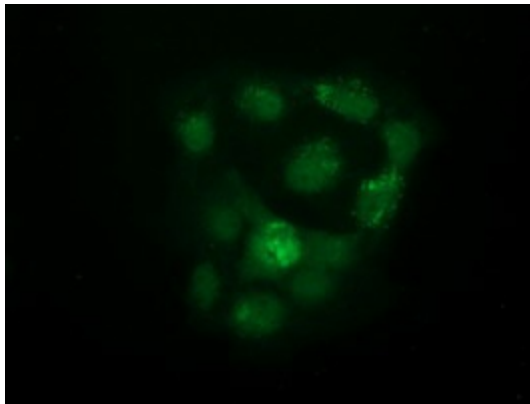
Western blot analysis of extracts (35ug) from 9 different cell lines by using anti-UHK1 monoclonal antibody.



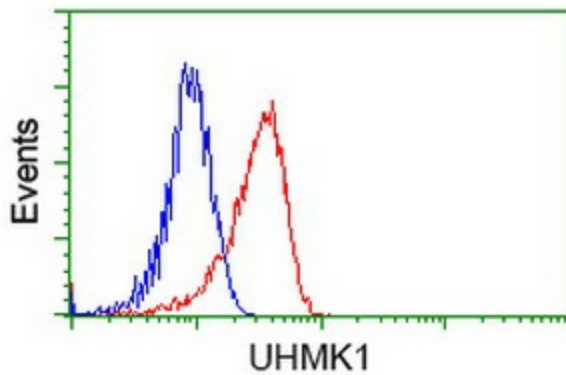
Immunohistochemical staining of paraffin-embedded Human liver tissue within the normal limits using anti-UHK1 mouse monoclonal antibody. (Heat-induced epitope retrieval by 10mM citric buffer, pH6.0, 100°C for 10min, [TA501720])



Immunohistochemical staining of paraffin-embedded Carcinoma of Human lung tissue using anti-UHMK1 mouse monoclonal antibody. (Heat-induced epitope retrieval by 10mM citric buffer, pH6.0, 100°C for 10min, [TA501720])



Anti-UHMK1 mouse monoclonal antibody ([TA501720]) immunofluorescent staining of COS7 cells transiently transfected by pCMV6-ENTRY UHMK1 ([RC214962]).



Flow cytometric Analysis of HeLa cells, using anti-UHMK1 antibody ([TA501720]), (Red), compared to a nonspecific negative control antibody (TA50011), (Blue).