

Product datasheet for **TA501704AM**

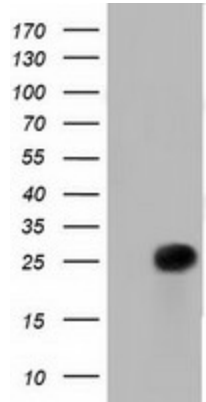
RIT2 Mouse Monoclonal Antibody (Biotin conjugated) [Clone ID: OTI4B5]

Product data:

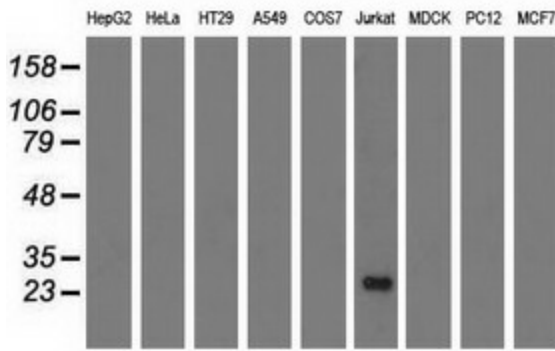
Product Type:	Primary Antibodies
Clone Name:	OTI4B5
Applications:	FC, WB
Recommended Dilution:	WB 1:500~2000, IF 1:100, FLOW 1:100
Reactivity:	Human, Mouse, Rat
Host:	Mouse
Isotype:	IgG2b
Clonality:	Monoclonal
Immunogen:	Full length human recombinant protein of human RIT2 (NP_002921) produced in HEK293T cell.
Formulation:	PBS (pH 7.3) containing 1% BSA, 50% glycerol and 0.02% sodium azide.
Concentration:	0.5 mg/ml
Purification:	Purified from mouse ascites fluids or tissue culture supernatant by affinity chromatography (protein A/G)
Conjugation:	Biotin
Storage:	Store at -20°C as received.
Stability:	Stable for 12 months from date of receipt.
Predicted Protein Size:	24.5 kDa
Gene Name:	Ras like without CAAX 2
Database Link:	NP_002921 Entrez Gene 19762 Mouse Entrez Gene 291713 Rat Entrez Gene 6014 Human Q99578
Background:	RIN belongs to the RAS (HRAS; MIM 190020) superfamily of small GTPases (Shao et al., 1999 [PubMed 10545207]). [supplied by OMIM]
Synonyms:	RIBA; RIN; ROC2



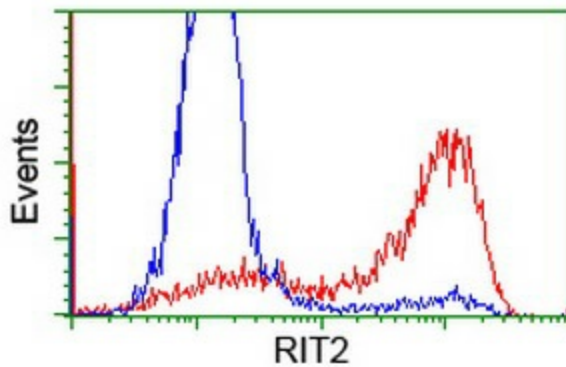
[View online »](#)

Product images:


HEK293T cells were transfected with the pCMV6-ENTRY control (Cat# [PS100001], Left lane) or pCMV6-ENTRY RIT2 (Cat# [RC205367], Right lane) cDNA for 48 hrs and lysed. Equivalent amounts of cell lysates (5 ug per lane) were separated by SDS-PAGE and immunoblotted with anti-RIT2 (Cat# [TA501704]). Positive lysates [LY401022] (100ug) and [LC401022] (20ug) can be purchased separately from OriGene.



Western blot analysis of extracts (35ug) from 9 different cell lines by using anti-RIT2 monoclonal antibody.



HEK293T cells transfected with either [RC205367] overexpress plasmid (Red) or empty vector control plasmid (Blue) were immunostained by anti-RIT2 antibody ([TA501704]), and then analyzed by flow cytometry.