

Product datasheet for **TA501691BM**

RND1 Mouse Monoclonal Antibody (HRP conjugated) [Clone ID: OT11C3]

Product data:

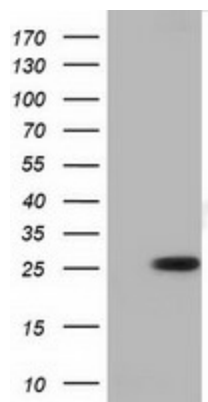
| | |
|--------------------------------|---|
| Product Type: | Primary Antibodies |
| Clone Name: | OT11C3 |
| Applications: | FC, IF, WB |
| Recommended Dilution: | WB 1:2000, IF 1:100, FLOW 1:100 |
| Reactivity: | Human, Mouse, Rat |
| Host: | Mouse |
| Isotype: | IgG1 |
| Clonality: | Monoclonal |
| Immunogen: | Full length human recombinant protein of human RND1 (NP_055285) produced in HEK293T cell. |
| Formulation: | PBS (pH 7.3) containing 1% BSA, 50% glycerol. |
| Concentration: | 0.5 mg/ml |
| Purification: | Purified from mouse ascites fluids or tissue culture supernatant by affinity chromatography (protein A/G) |
| Conjugation: | HRP |
| Storage: | Store at -20°C as received. |
| Stability: | Stable for 12 months from date of receipt. |
| Predicted Protein Size: | 25.9 kDa |
| Gene Name: | Rho family GTPase 1 |
| Database Link: | NP_055285 Entrez Gene 27289 Human Q92730 |
| Background: | Members of the Rho GTPase family, such as RND1, regulate the organization of the actin cytoskeleton in response to extracellular growth factors (Nobes et al., 1998 [PubMed 9531558]). [supplied by OMIM] |
| Synonyms: | ARHS; RHO6; RHOS |
| Protein Families: | Stem cell - Pluripotency |



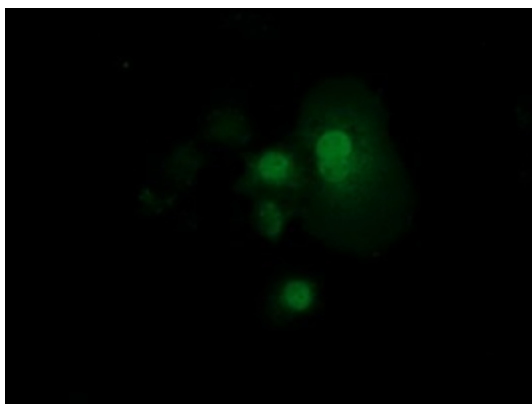
[View online »](#)

Protein Pathways: Axon guidance

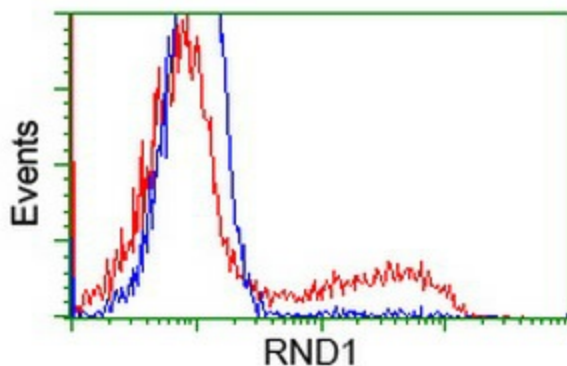
Product images:



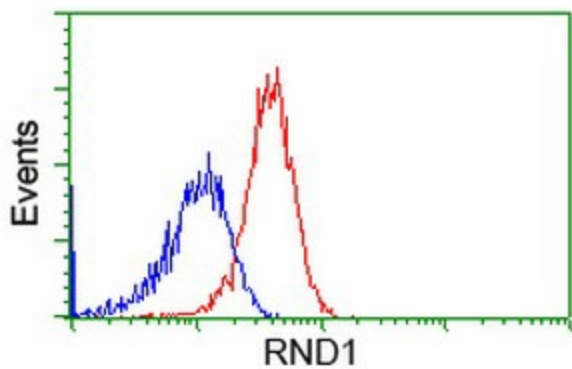
HEK293T cells were transfected with the pCMV6-ENTRY control (Cat# [PS100001], Left lane) or pCMV6-ENTRY RND1 (Cat# [RC205535], Right lane) cDNA for 48 hrs and lysed. Equivalent amounts of cell lysates (5 ug per lane) were separated by SDS-PAGE and immunoblotted with anti-RND1 (Cat# [TA501691]). Positive lysates [LY415252] (100ug) and [LC415252] (20ug) can be purchased separately from OriGene.



Anti-RND1 mouse monoclonal antibody ([TA501691]) immunofluorescent staining of COS7 cells transiently transfected by pCMV6-ENTRY RND1 ([RC205535]).



HEK293T cells transfected with either [RC205535] overexpress plasmid (Red) or empty vector control plasmid (Blue) were immunostained by anti-RND1 antibody ([TA501691]), and then analyzed by flow cytometry.



Flow cytometric Analysis of HeLa cells, using anti-RND1 antibody ([TA501691]), (Red), compared to a nonspecific negative control antibody (TA50011), (Blue).