

Product datasheet for **TA501691AM**

RND1 Mouse Monoclonal Antibody (Biotin conjugated) [Clone ID: OT11C3]

Product data:

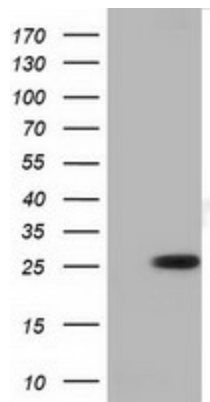
Product Type:	Primary Antibodies
Clone Name:	OT11C3
Applications:	FC, IF, WB
Recommended Dilution:	WB 1:2000, IF 1:100, FLOW 1:100
Reactivity:	Human, Mouse, Rat
Host:	Mouse
Isotype:	IgG1
Clonality:	Monoclonal
Immunogen:	Full length human recombinant protein of human RND1 (NP_055285) produced in HEK293T cell.
Formulation:	PBS (pH 7.3) containing 1% BSA, 50% glycerol and 0.02% sodium azide.
Concentration:	0.5 mg/ml
Purification:	Purified from mouse ascites fluids or tissue culture supernatant by affinity chromatography (protein A/G)
Conjugation:	Biotin
Storage:	Store at -20°C as received.
Stability:	Stable for 12 months from date of receipt.
Predicted Protein Size:	25.9 kDa
Gene Name:	Rho family GTPase 1
Database Link:	NP_055285 Entrez Gene 27289 Human Q92730
Background:	Members of the Rho GTPase family, such as RND1, regulate the organization of the actin cytoskeleton in response to extracellular growth factors (Nobes et al., 1998 [PubMed 9531558]). [supplied by OMIM]
Synonyms:	ARHS; RHO6; RHOS
Protein Families:	Stem cell - Pluripotency



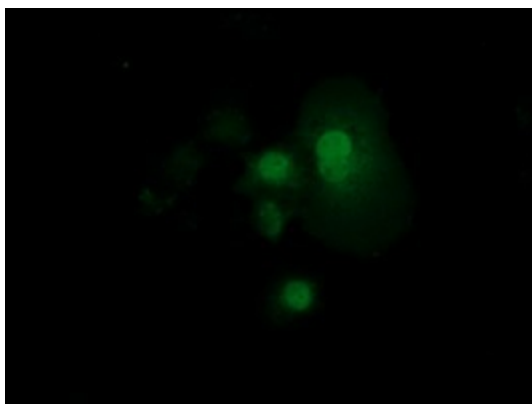
[View online »](#)

Protein Pathways: Axon guidance

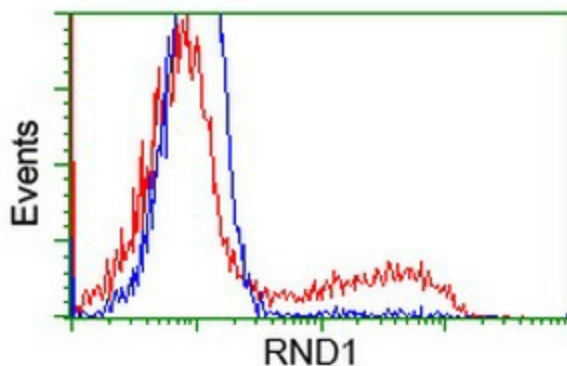
Product images:



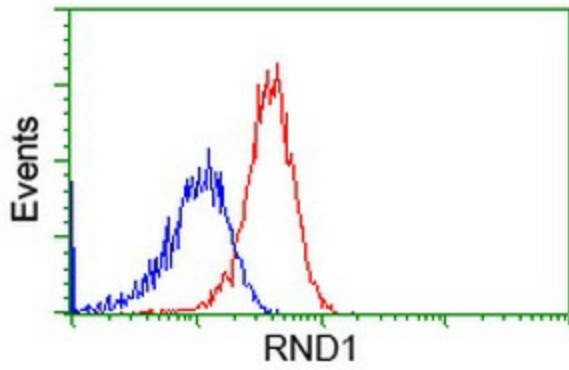
HEK293T cells were transfected with the pCMV6-ENTRY control (Cat# [PS100001], Left lane) or pCMV6-ENTRY RND1 (Cat# [RC205535], Right lane) cDNA for 48 hrs and lysed. Equivalent amounts of cell lysates (5 ug per lane) were separated by SDS-PAGE and immunoblotted with anti-RND1 (Cat# [TA501691]). Positive lysates [LY415252] (100ug) and [LC415252] (20ug) can be purchased separately from OriGene.



Anti-RND1 mouse monoclonal antibody ([TA501691]) immunofluorescent staining of COS7 cells transiently transfected by pCMV6-ENTRY RND1 ([RC205535]).



HEK293T cells transfected with either [RC205535] overexpress plasmid (Red) or empty vector control plasmid (Blue) were immunostained by anti-RND1 antibody ([TA501691]), and then analyzed by flow cytometry.



Flow cytometric Analysis of HeLa cells, using anti-RND1 antibody ([TA501691]), (Red), compared to a nonspecific negative control antibody (TA50011), (Blue).