

## Product datasheet for **TA501691**

### **RND1 Mouse Monoclonal Antibody [Clone ID: OTI1C3]**

#### **Product data:**

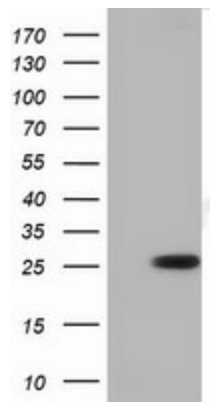
<b>Product Type:</b>	Primary Antibodies
<b>Clone Name:</b>	OTI1C3
<b>Applications:</b>	FC, IF, WB
<b>Recommended Dilution:</b>	WB 1:2000, IF 1:100, FLOW 1:100
<b>Reactivity:</b>	Human, Mouse, Rat
<b>Host:</b>	Mouse
<b>Isotype:</b>	IgG1
<b>Clonality:</b>	Monoclonal
<b>Immunogen:</b>	Full length human recombinant protein of human RND1 (NP_055285) produced in HEK293T cell.
<b>Formulation:</b>	PBS (pH 7.3) containing 1% BSA, 50% glycerol and 0.02% sodium azide.
<b>Concentration:</b>	0.36 mg/ml
<b>Purification:</b>	Purified from mouse ascites fluids or tissue culture supernatant by affinity chromatography (protein A/G)
<b>Conjugation:</b>	Unconjugated
<b>Storage:</b>	Store at -20°C as received.
<b>Stability:</b>	Stable for 12 months from date of receipt.
<b>Predicted Protein Size:</b>	25.9 kDa
<b>Gene Name:</b>	Rho family GTPase 1
<b>Database Link:</b>	<a href="#">NP_055285</a> <a href="#">Entrez Gene 27289 Human</a> <a href="#">Q92730</a>
<b>Background:</b>	Members of the Rho GTPase family, such as RND1, regulate the organization of the actin cytoskeleton in response to extracellular growth factors (Nobes et al., 1998 [PubMed 9531558]). [supplied by OMIM]
<b>Synonyms:</b>	ARHS; RHO6; RHOS
<b>Protein Families:</b>	Stem cell - Pluripotency



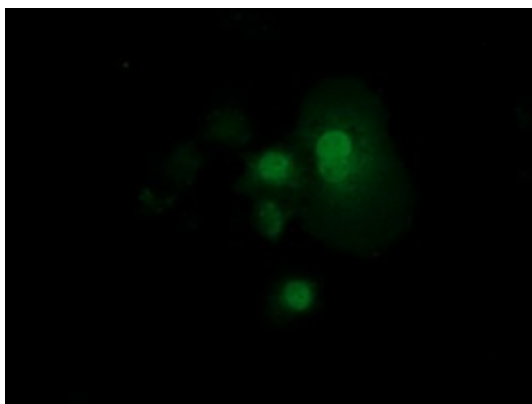
[View online »](#)

Protein Pathways: Axon guidance

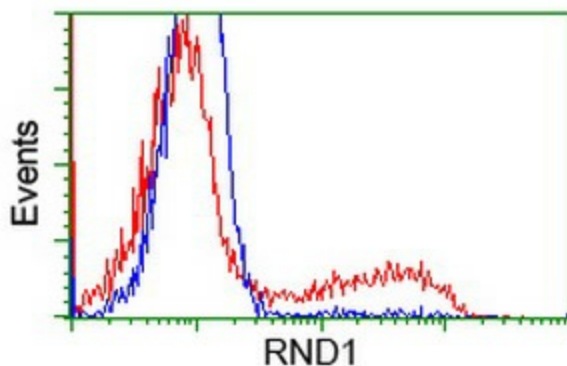
### Product images:



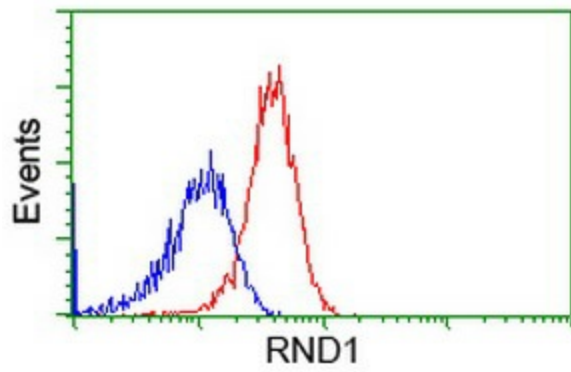
HEK293T cells were transfected with the pCMV6-ENTRY control (Cat# [PS100001], Left lane) or pCMV6-ENTRY RND1 (Cat# [RC205535], Right lane) cDNA for 48 hrs and lysed. Equivalent amounts of cell lysates (5 ug per lane) were separated by SDS-PAGE and immunoblotted with anti-RND1 (Cat# TA501691). Positive lysates [LY415252] (100ug) and [LC415252] (20ug) can be purchased separately from OriGene.



Anti-RND1 mouse monoclonal antibody (TA501691) immunofluorescent staining of COS7 cells transiently transfected by pCMV6-ENTRY RND1 ([RC205535]).



HEK293T cells transfected with either [RC205535] overexpress plasmid (Red) or empty vector control plasmid (Blue) were immunostained by anti-RND1 antibody (TA501691), and then analyzed by flow cytometry.



Flow cytometric Analysis of HeLa cells, using anti-RND1 antibody (TA501691), (Red), compared to a nonspecific negative control antibody (TA50011), (Blue).