

Product datasheet for **TA501672AM**

Protein Kinase D2 (PRKD2) Mouse Monoclonal Antibody (Biotin conjugated) [Clone ID: OTI5G1]

Product data:

Product Type:	Primary Antibodies
Clone Name:	OTI5G1
Applications:	FC, IF, IHC, WB
Recommended Dilution:	WB 1:500~2000, IHC 1:150, IF 1:100, FLOW 1:100
Reactivity:	Human, Dog, Rat, Monkey, Mouse
Host:	Mouse
Isotype:	IgG2b
Clonality:	Monoclonal
Immunogen:	Full length human recombinant protein of human PRKD2 (NP_057541) produced in HEK293T cell.
Formulation:	PBS (pH 7.3) containing 1% BSA, 50% glycerol and 0.02% sodium azide.
Concentration:	0.5 mg/ml
Purification:	Purified from mouse ascites fluids or tissue culture supernatant by affinity chromatography (protein A/G)
Conjugation:	Biotin
Storage:	Store at -20°C as received.
Stability:	Stable for 12 months from date of receipt.
Predicted Protein Size:	96.5 kDa
Gene Name:	protein kinase D2
Database Link:	NP_057541 Entrez Gene 101540 MouseEntrez Gene 292658 RatEntrez Gene 484427 DogEntrez Gene 716736 MonkeyEntrez Gene 25865 Human Q9BZL6



[View online »](#)

Background:

The protein encoded by this gene belongs to the protein kinase D (PKD) family of serine/threonine protein kinases. This kinase can be activated by phorbol esters as well as by gastrin via the cholecystinin B receptor (CCKBR) in gastric cancer cells. It can bind to diacylglycerol (DAG) in the trans-Golgi network (TGN) and may regulate basolateral membrane protein exit from TGN. Alternative splicing results in multiple transcript variants encoding different isoforms. [provided by RefSeq]

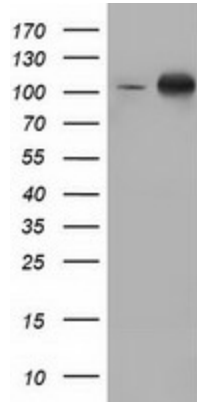
Synonyms:

HSPC187; nPKC-D2; PKD2

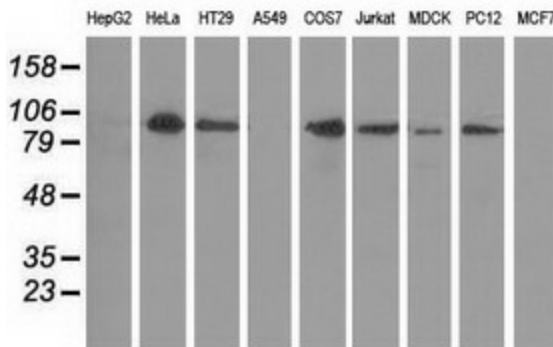
Protein Families:

Druggable Genome, Protein Kinase

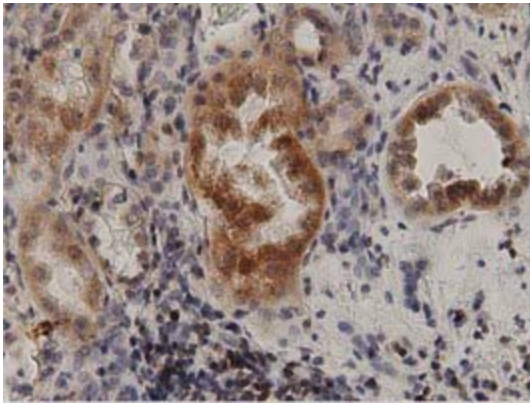
Product images:



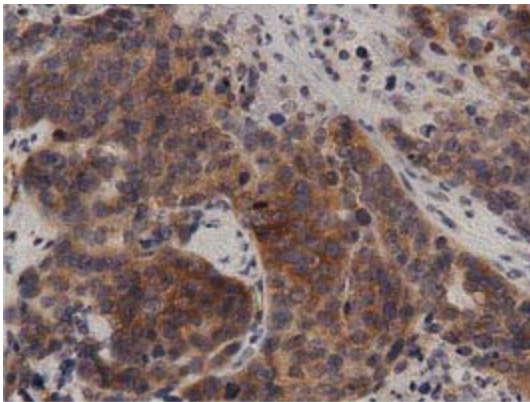
HEK293T cells were transfected with the pCMV6-ENTRY control (Cat# [PS100001], Left lane) or pCMV6-ENTRY PRKD2 (Cat# [RC215335], Right lane) cDNA for 48 hrs and lysed. Equivalent amounts of cell lysates (5 ug per lane) were separated by SDS-PAGE and immunoblotted with anti-PRKD2(Cat# [TA501672]). Positive lysates [LY402555] (100ug) and [LC402555] (20ug) can be purchased separately from OriGene.



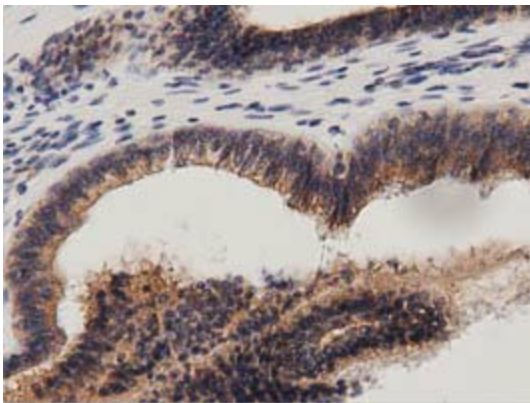
Western blot analysis of extracts (35ug) from 9 different cell lines by using anti-PRKD2 monoclonal antibody.



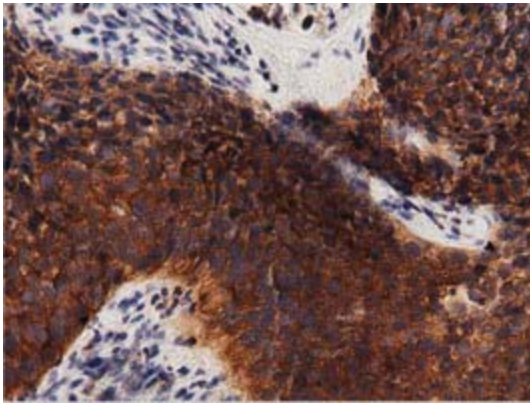
Immunohistochemical staining of paraffin-embedded Human Kidney tissue within the normal limits using anti-PRKD2 mouse monoclonal antibody. (Heat-induced epitope retrieval by 10mM citric buffer, pH6.0, 100°C for 10min, [TA501672], Dilution 1:50)



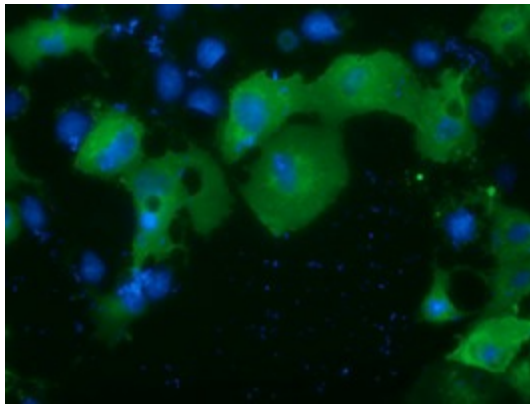
Immunohistochemical staining of paraffin-embedded Adenocarcinoma of Human ovary tissue using anti-PRKD2 mouse monoclonal antibody. (Heat-induced epitope retrieval by 10mM citric buffer, pH6.0, 100°C for 10min, [TA501672], Dilution 1:50)



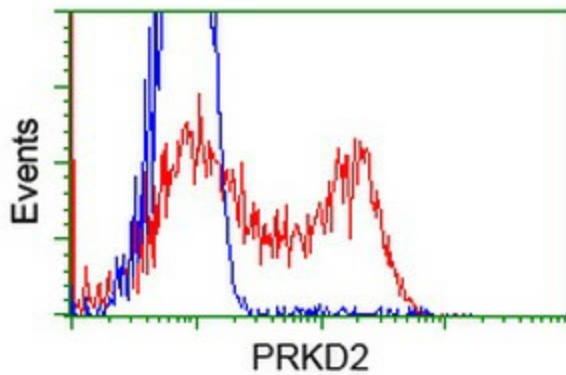
Immunohistochemical staining of paraffin-embedded Adenocarcinoma of Human endometrium tissue using anti-PRKD2 mouse monoclonal antibody. (Heat-induced epitope retrieval by 10mM citric buffer, pH6.0, 100°C for 10min, [TA501672], Dilution 1:50)



Immunohistochemical staining of paraffin-embedded Carcinoma of Human bladder tissue using anti-PRKD2 mouse monoclonal antibody. (Heat-induced epitope retrieval by 10mM citric buffer, pH6.0, 100°C for 10min, [TA501672], Dilution 1:50)



Anti-PRKD2 mouse monoclonal antibody ([TA501672]) immunofluorescent staining of COS7 cells transiently transfected by pCMV6-ENTRY PRKD2 ([RC215335]).



HEK293T cells transfected with either [RC215335] overexpress plasmid (Red) or empty vector control plasmid (Blue) were immunostained by anti-PRKD2 antibody ([TA501672]), and then analyzed by flow cytometry.