

Product datasheet for **TA501671M**

Protein Kinase D2 (PRKD2) Mouse Monoclonal Antibody [Clone ID: OTI3A1]

Product data:

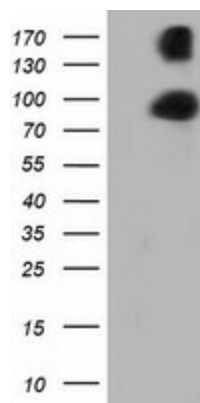
Product Type:	Primary Antibodies
Clone Name:	OTI3A1
Applications:	FC, WB
Recommended Dilution:	WB 1:2000, FLOW 1:100
Reactivity:	Human, Mouse, Rat
Host:	Mouse
Isotype:	IgG2b
Clonality:	Monoclonal
Immunogen:	Full length human recombinant protein of human PRKD2 (NP_057541) produced in HEK293T cell.
Formulation:	PBS (pH 7.3) containing 1% BSA, 50% glycerol and 0.02% sodium azide.
Concentration:	0.58 mg/ml
Purification:	Purified from mouse ascites fluids or tissue culture supernatant by affinity chromatography (protein A/G)
Conjugation:	Unconjugated
Storage:	Store at -20°C as received.
Stability:	Stable for 12 months from date of receipt.
Predicted Protein Size:	96.5 kDa
Gene Name:	protein kinase D2
Database Link:	NP_057541 Entrez Gene 101540 Mouse Entrez Gene 292658 Rat Entrez Gene 25865 Human Q9BZL6
Background:	The protein encoded by this gene belongs to the protein kinase D (PKD) family of serine/threonine protein kinases. This kinase can be activated by phorbol esters as well as by gastrin via the cholecystokinin B receptor (CCKBR) in gastric cancer cells. It can bind to diacylglycerol (DAG) in the trans-Golgi network (TGN) and may regulate basolateral membrane protein exit from TGN. Alternative splicing results in multiple transcript variants encoding different isoforms. [provided by RefSeq]


[View online »](#)

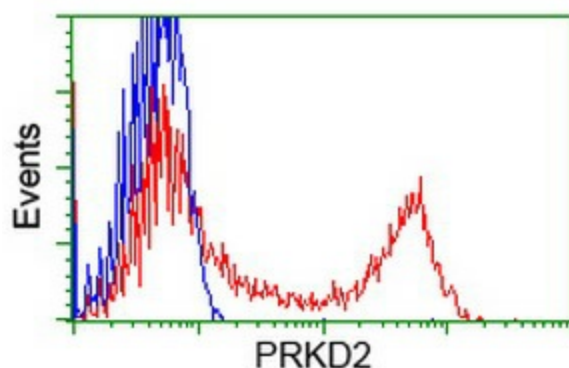
Synonyms: HSPC187; nPKC-D2; PKD2

Protein Families: Druggable Genome, Protein Kinase

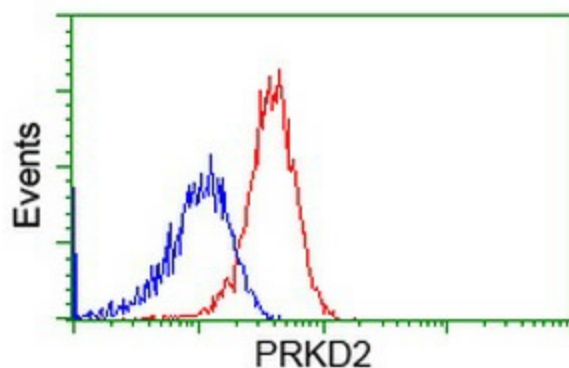
Product images:



HEK293T cells were transfected with the pCMV6-ENTRY control (Left lane) or pCMV6-ENTRY PRKD2 ([RC215335], Right lane) cDNA for 48 hrs and lysed. Equivalent amounts of cell lysates (5 ug per lane) were separated by SDS-PAGE and immunoblotted with anti-PRKD2. Positive lysates [LY402555] (100ug) and [LC402555] (20ug) can be purchased separately from OriGene.



HEK293T cells transfected with either [RC215335] overexpress plasmid (Red) or empty vector control plasmid (Blue) were immunostained by anti-PRKD2 antibody ([TA501671]), and then analyzed by flow cytometry.



Flow cytometric Analysis of HeLa cells, using anti-PRKD2 antibody ([TA501671]), (Red), compared to a nonspecific negative control antibody (TA50011), (Blue).