

Product datasheet for **TA501670**

IVD Mouse Monoclonal Antibody [Clone ID: OTI1F1]

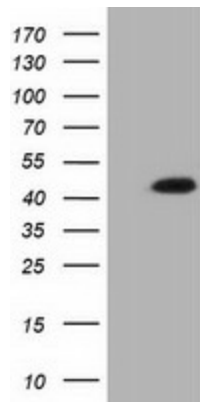
Product data:

Product Type:	Primary Antibodies
Clone Name:	OTI1F1
Applications:	FC, WB
Recommended Dilution:	WB 1:2000, FLOW 1:100
Reactivity:	Human, Mouse, Rat
Host:	Mouse
Isotype:	IgG2b
Clonality:	Monoclonal
Immunogen:	Full length human recombinant protein of human IVD (NP_002612) produced in HEK293T cell.
Formulation:	PBS (pH 7.3) containing 1% BSA, 50% glycerol and 0.02% sodium azide.
Concentration:	0.94 mg/ml
Purification:	Purified from mouse ascites fluids or tissue culture supernatant by affinity chromatography (protein A/G)
Conjugation:	Unconjugated
Storage:	Store at -20°C as received.
Stability:	Stable for 12 months from date of receipt.
Predicted Protein Size:	46.5 kDa
Gene Name:	isovaleryl-CoA dehydrogenase
Database Link:	NP_002216 Entrez Gene 24513 Rat Entrez Gene 56357 Mouse Entrez Gene 3712 Human P26440
Background:	Isovaleryl-CoA dehydrogenase (IVD) is a mitochondrial matrix enzyme that catalyzes the third step in leucine catabolism. The genetic deficiency of IVD results in an accumulation of isovaleric acid, which is toxic to the central nervous system and leads to isovaleric acidemia. Alternatively spliced transcript variants encoding different isoforms have been found for this gene. [provided by RefSeq]

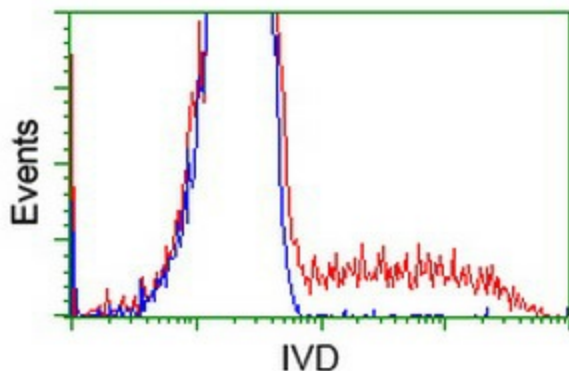


[View online »](#)

Synonyms: ACAD2; IVDH
Protein Families: Druggable Genome
Protein Pathways: Metabolic pathways, Valine, leucine and isoleucine degradation

Product images:

HEK293T cells were transfected with the pCMV6-ENTRY control (Left lane) or pCMV6-ENTRY IVD ([RC229217], Right lane) cDNA for 48 hrs and lysed. Equivalent amounts of cell lysates (5 ug per lane) were separated by SDS-PAGE and immunoblotted with anti-IVD. Positive lysates [LY432239] (100ug) and [LC432239] (20ug) can be purchased separately from OriGene.



HEK293T cells transfected with either [RC201077] overexpress plasmid (Red) or empty vector control plasmid (Blue) were immunostained by anti-IVD antibody (TA501670), and then analyzed by flow cytometry.