

## Product datasheet for **TA501645M**

### **HSPC150 (UBE2T) Mouse Monoclonal Antibody [Clone ID: OTI2F5]**

#### **Product data:**

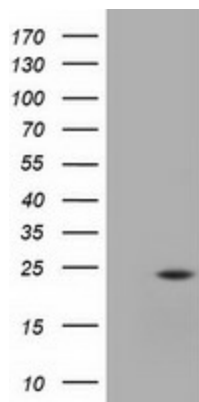
Product Type:	Primary Antibodies
Clone Name:	OTI2F5
Applications:	IF, WB
Recommended Dilution:	WB 1:500, IF 1:100
Reactivity:	Human, Mouse
Host:	Mouse
Isotype:	IgG2a
Clonality:	Monoclonal
Immunogen:	Full length human recombinant protein of human UBE2T (NP_054895) produced in HEK293T cell.
Formulation:	PBS (pH 7.3) containing 1% BSA, 50% glycerol and 0.02% sodium azide.
Concentration:	0.33 mg/ml
Purification:	Purified from mouse ascites fluids or tissue culture supernatant by affinity chromatography (protein A/G)
Conjugation:	Unconjugated
Storage:	Store at -20°C as received.
Stability:	Stable for 12 months from date of receipt.
Predicted Protein Size:	22.3 kDa
Gene Name:	ubiquitin conjugating enzyme E2 T
Database Link:	<a href="#">NP_054895</a> <a href="#">Entrez Gene 67196 Mouse</a> <a href="#">Entrez Gene 29089 Human</a> <a href="#">Q9NPD8</a>
Background:	The covalent conjugation of ubiquitin to proteins regulates diverse cellular pathways and proteins. Ubiquitin is transferred to a target protein through a concerted action of a ubiquitin-activating enzyme (E1), a ubiquitin-conjugating enzyme (E2), such as UBE2T, and a ubiquitin ligase (E3) (Machida et al., 2006 [PubMed 16916645]). [supplied by OMIM]
Synonyms:	FANCT; HSPC150; PIG50



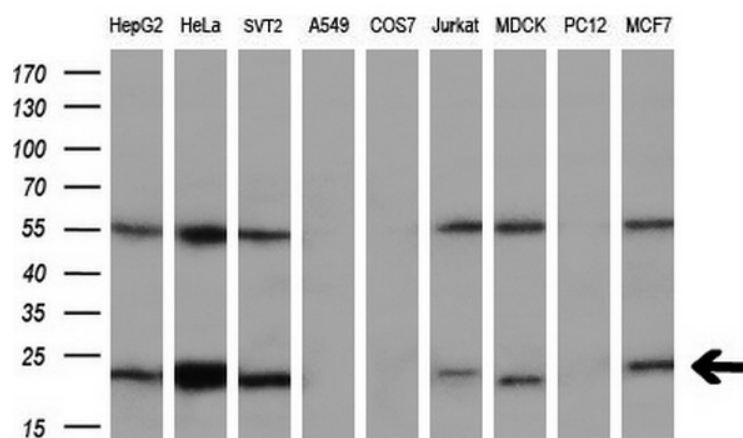
[View online »](#)

Protein Families: Druggable Genome

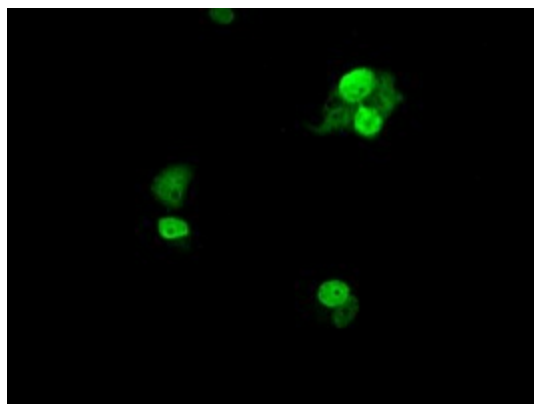
## Product images:



HEK293T cells were transfected with the pCMV6-ENTRY control (Cat# [PS100001], Left lane) or pCMV6-ENTRY UBE2T (Cat# [RC200748], Right lane) cDNA for 48 hrs and lysed. Equivalent amounts of cell lysates (5 ug per lane) were separated by SDS-PAGE and immunoblotted with anti-UBE2T (Cat# [TA501645]). Positive lysates [LY402285] (100ug) and [LC402285] (20ug) can be purchased separately from OriGene.



Western blot analysis of extracts (35ug) from 9 different cell lines by using anti-UBE2T monoclonal antibody (HepG2: human; HeLa: human; SVT2: mouse; A549: human; COS7: monkey; Jurkat: human; MDCK: canine; PC12: rat; MCF7: human) (1:200).



Anti-UBE2T mouse monoclonal antibody ([TA501645]) immunofluorescent staining of COS7 cells transiently transfected by pCMV6-ENTRY UBE2T ([RC200748]).