

## Product datasheet for **TA501645AM**

### **HSPC150 (UBE2T) Mouse Monoclonal Antibody (Biotin conjugated) [Clone ID: OTI2F5]**

#### **Product data:**

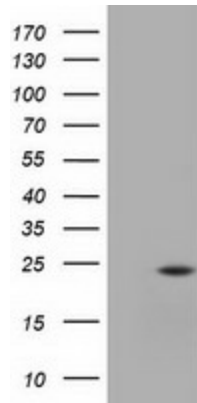
<b>Product Type:</b>	Primary Antibodies
<b>Clone Name:</b>	OTI2F5
<b>Applications:</b>	IF, WB
<b>Recommended Dilution:</b>	WB 1:500, IF 1:100
<b>Reactivity:</b>	Human, Mouse
<b>Host:</b>	Mouse
<b>Isotype:</b>	IgG2a
<b>Clonality:</b>	Monoclonal
<b>Immunogen:</b>	Full length human recombinant protein of human UBE2T (NP_054895) produced in HEK293T cell.
<b>Formulation:</b>	PBS (pH 7.3) containing 1% BSA, 50% glycerol and 0.02% sodium azide.
<b>Concentration:</b>	0.5 mg/ml
<b>Purification:</b>	Purified from mouse ascites fluids or tissue culture supernatant by affinity chromatography (protein A/G)
<b>Conjugation:</b>	Biotin
<b>Storage:</b>	Store at -20°C as received.
<b>Stability:</b>	Stable for 12 months from date of receipt.
<b>Predicted Protein Size:</b>	22.3 kDa
<b>Gene Name:</b>	ubiquitin conjugating enzyme E2 T
<b>Database Link:</b>	<a href="#">NP_054895</a> <a href="#">Entrez Gene 67196 Mouse</a> <a href="#">Entrez Gene 29089 Human</a> <a href="#">Q9NPD8</a>
<b>Background:</b>	The covalent conjugation of ubiquitin to proteins regulates diverse cellular pathways and proteins. Ubiquitin is transferred to a target protein through a concerted action of a ubiquitin-activating enzyme (E1), a ubiquitin-conjugating enzyme (E2), such as UBE2T, and a ubiquitin ligase (E3) (Machida et al., 2006 [PubMed 16916645]). [supplied by OMIM]
<b>Synonyms:</b>	FANCT; HSPC150; PIG50



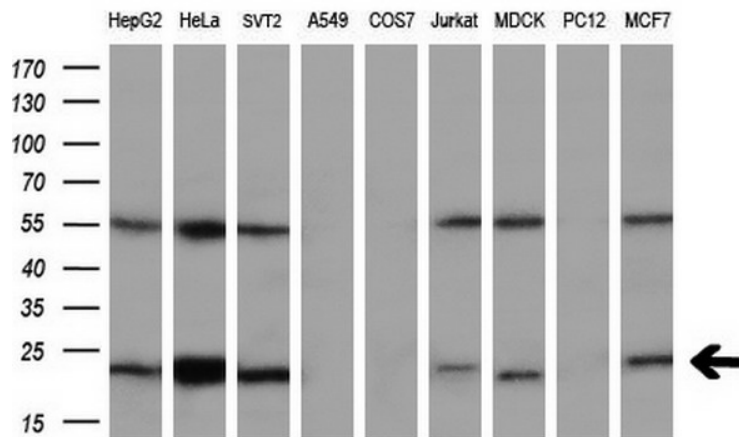
[View online »](#)

Protein Families: Druggable Genome

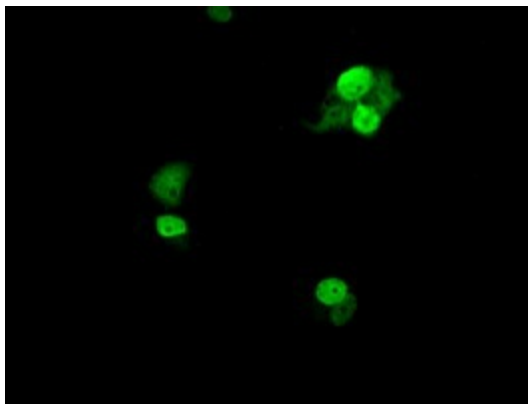
**Product images:**



HEK293T cells were transfected with the pCMV6-ENTRY control (Cat# [PS100001], Left lane) or pCMV6-ENTRY UBE2T (Cat# [RC200748], Right lane) cDNA for 48 hrs and lysed. Equivalent amounts of cell lysates (5 ug per lane) were separated by SDS-PAGE and immunoblotted with anti-UBE2T(Cat# [TA501645]). Positive lysates [LY402285] (100ug) and [LC402285] (20ug) can be purchased separately from OriGene.



Western blot analysis of extracts (35ug) from 9 different cell lines by using anti-UBE2T monoclonal antibody (HepG2: human; HeLa: human; SVT2: mouse; A549: human; COS7: monkey; Jurkat: human; MDCK: canine; PC12: rat; MCF7: human) (1:200).



Anti-UBE2T mouse monoclonal antibody ([TA501645]) immunofluorescent staining of COS7 cells transiently transfected by pCMV6-ENTRY UBE2T ([RC200748]).