

## Product datasheet for **TA501643S**

### Adenylate kinase 5 (AK5) Mouse Monoclonal Antibody [Clone ID: OTI2A2]

#### Product data:

Product Type:	Primary Antibodies
Clone Name:	OTI2A2
Applications:	FC, IHC, WB
Recommended Dilution:	WB 1:2000, IHC 1:150, FLOW 1:100
Reactivity:	Human, Mouse, Rat
Host:	Mouse
Isotype:	IgG1
Clonality:	Monoclonal
Immunogen:	Full length human recombinant protein of human AK5 (NP_777283) produced in HEK293T cell.
Formulation:	PBS (pH 7.3) containing 1% BSA, 50% glycerol and 0.02% sodium azide.
Concentration:	1 mg/ml
Purification:	Purified from mouse ascites fluids or tissue culture supernatant by affinity chromatography (protein A/G)
Conjugation:	Unconjugated
Storage:	Store at -20°C as received.
Stability:	Stable for 12 months from date of receipt.
Predicted Protein Size:	63.2 kDa
Gene Name:	adenylate kinase 5
Database Link:	<a href="#">NP_777283</a> <a href="#">Entrez Gene 229949 Mouse</a> <a href="#">Entrez Gene 26289 Human</a> <a href="#">Q9Y6K8</a>
Background:	This gene encodes a member of the adenylate kinase family, which is involved in regulating the adenine nucleotide composition within a cell by catalyzing the reversible transfer of phosphate groups among adenine nucleotides. This member is related to the UMP/CMP kinase of several species. It is located in the cytosol and expressed exclusively in brain. Alternatively spliced transcript variants encoding distinct isoforms have been identified for this gene. [provided by RefSeq]



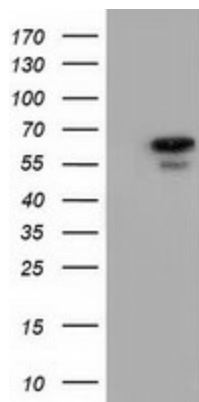
[View online »](#)

**Synonyms:** AK6

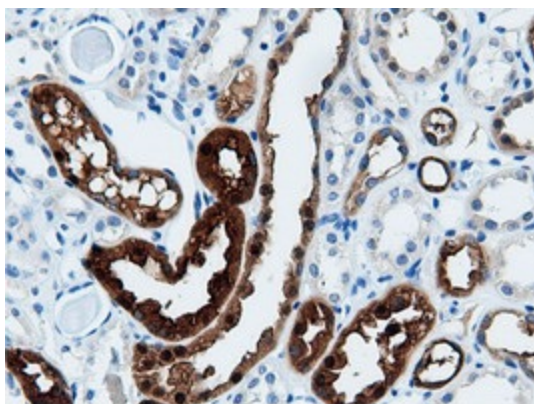
**Protein Families:** Druggable Genome

**Protein Pathways:** Metabolic pathways, Purine metabolism

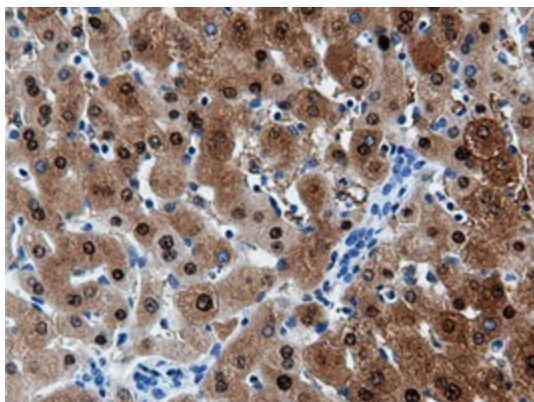
### Product images:



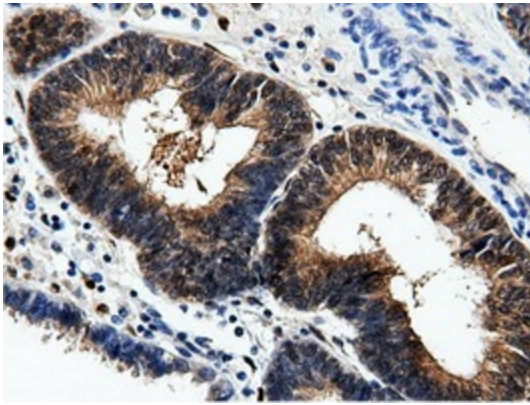
HEK293T cells were transfected with the pCMV6-ENTRY control (Left lane) or pCMV6-ENTRY AK5 ([RC222241], Right lane) cDNA for 48 hrs and lysed. Equivalent amounts of cell lysates (5 ug per lane) were separated by SDS-PAGE and immunoblotted with anti-AK5. Positive lysates [LY403569] (100ug) and [LC403569] (20ug) can be purchased separately from OriGene.



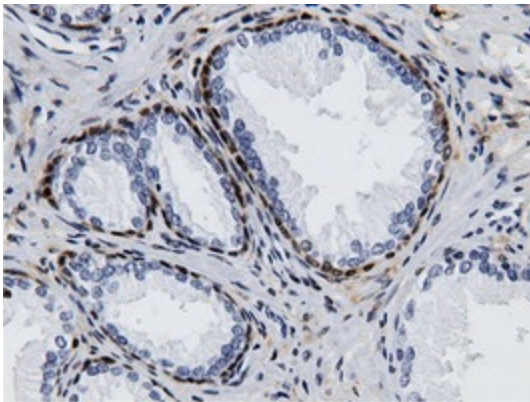
Immunohistochemical staining of paraffin-embedded Human Kidney tissue within the normal limits using anti-AK5 mouse monoclonal antibody. (Heat-induced epitope retrieval by 10mM citric buffer, pH6.0, 100°C for 10min, [TA501643])



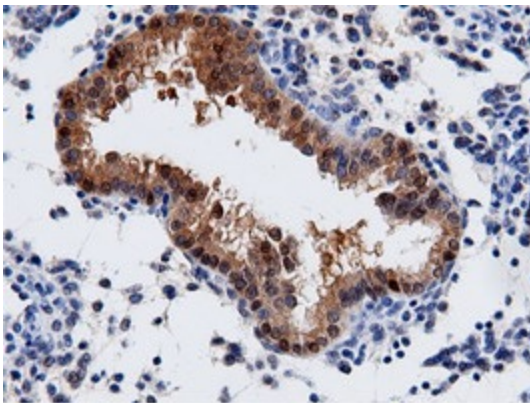
Immunohistochemical staining of paraffin-embedded Human liver tissue within the normal limits using anti-AK5 mouse monoclonal antibody. (Heat-induced epitope retrieval by 10mM citric buffer, pH6.0, 100°C for 10min, [TA501643])



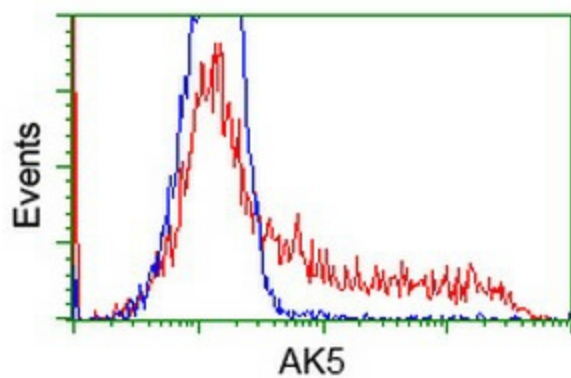
Immunohistochemical staining of paraffin-embedded Adenocarcinoma of Human endometrium tissue using anti-AK5 mouse monoclonal antibody. (Heat-induced epitope retrieval by 10mM citric buffer, pH6.0, 100°C for 10min, [TA501643])



Immunohistochemical staining of paraffin-embedded Human prostate tissue within the normal limits using anti-AK5 mouse monoclonal antibody. (Heat-induced epitope retrieval by 10mM citric buffer, pH6.0, 100°C for 10min, [TA501643])



Immunohistochemical staining of paraffin-embedded Carcinoma of Human prostate tissue using anti-AK5 mouse monoclonal antibody. (Heat-induced epitope retrieval by 10mM citric buffer, pH6.0, 100°C for 10min, [TA501643])



HEK293T cells transfected with either [RC222241] overexpress plasmid (Red) or empty vector control plasmid (Blue) were immunostained by anti-AK5 antibody ([TA501643]), and then analyzed by flow cytometry.