

## Product datasheet for **TA501634M**

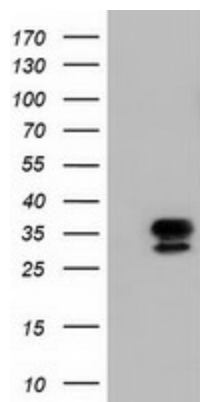
### NSE2 (NSMCE2) Mouse Monoclonal Antibody [Clone ID: OTI4H9]

#### Product data:

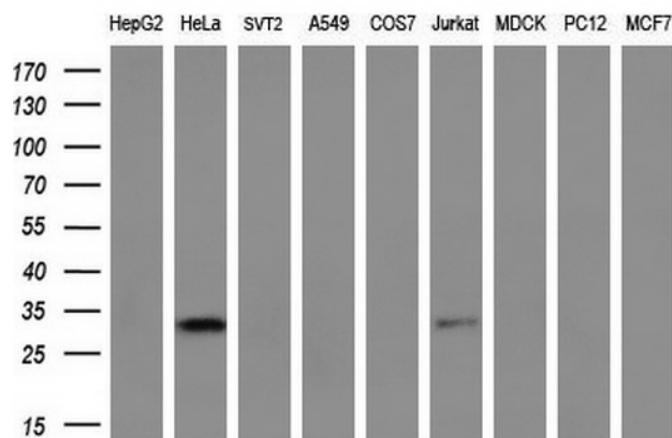
|                         |   |
|-------------------------|---|
| Product Type:           | Primary Antibodies  |
| Clone Name:             | OTI4H9  |
| Applications:           | FC, IF, WB  |
| Recommended Dilution:   | WB 1:2000, IF 1:100, FLOW 1:100   |
| Reactivity:             | Human   |
| Host:                   | Mouse   |
| Isotype:                | IgG1  |
| Clonality:              | Monoclonal  |
| Immunogen:              | Full length human recombinant protein of human NSMCE2 (NP_775956) produced in E.coli.                     |
| Formulation:            | PBS (pH 7.3) containing 1% BSA, 50% glycerol and 0.02% sodium azide.                                      |
| Concentration:          | 0.81 mg/ml  |
| Purification:           | Purified from mouse ascites fluids or tissue culture supernatant by affinity chromatography (protein A/G) |
| Conjugation:            | Unconjugated  |
| Storage:                | Store at -20°C as received.   |
| Stability:              | Stable for 12 months from date of receipt.  |
| Predicted Protein Size: | 27.8 kDa  |
| Gene Name:              | NSE2 (MMS21) homolog, SMC5-SMC6 complex SUMO ligase   |
| Database Link:          | <a href="#">NP_775956</a><br><a href="#">Entrez Gene 286053 Human</a><br><a href="#">Q96MF7</a>           |
| Synonyms:               | C8orf36; MMS21; NSE2; ZMIZ7   |


[View online »](#)

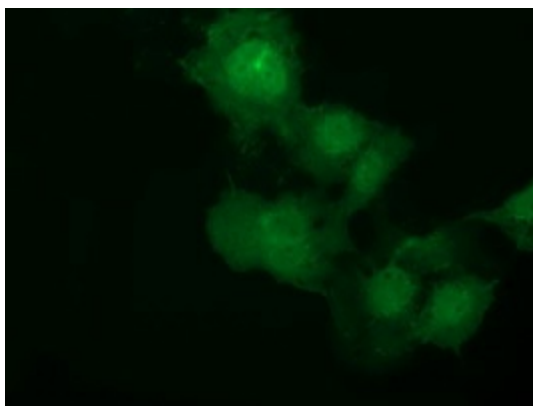
## Product images:



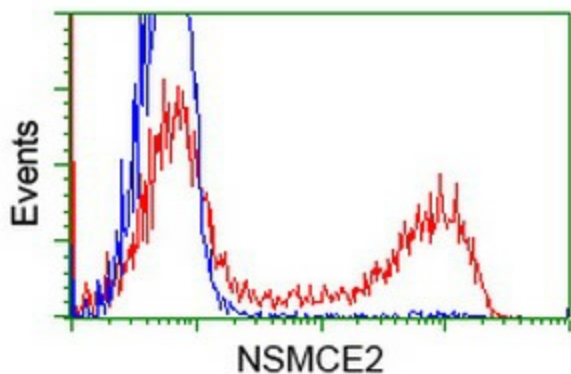
HEK293T cells were transfected with the pCMV6-ENTRY control (Left lane) or pCMV6-ENTRY NSMCE2 [RC207639], Right lane) cDNA for 48 hrs and lysed. Equivalent amounts of cell lysates (5 ug per lane) were separated by SDS-PAGE and immunoblotted with anti-NSMCE2. Positive lysates [LY406558] (100ug) and [LC406558] (20ug) can be purchased separately from OriGene.



Western blot analysis of extracts (35ug) from 9 different cell lines by using anti-NSMCE2 monoclonal antibody (HepG2: human; HeLa: human; SVT2: mouse; A549: human; COS7: monkey; Jurkat: human; MDCK: canine; PC12: rat; MCF7: human) (1:200).



Anti-NSMCE2 mouse monoclonal antibody ([TA501634]) immunofluorescent staining of COS7 cells transiently transfected by pCMV6-ENTRY NSMCE2 ([RC207639]).



HEK293T cells transfected with either [RC207639] overexpress plasmid (Red) or empty vector control plasmid (Blue) were immunostained by anti-NSMCE2 antibody ([TA501634]), and then analyzed by flow cytometry.