

Product datasheet for **TA501633BM**

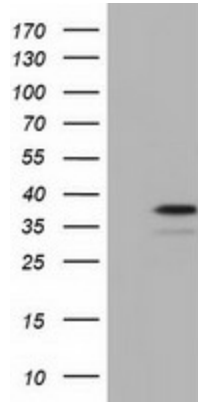
NSE2 (NSMCE2) Mouse Monoclonal Antibody (HRP conjugated) [Clone ID: OTI3C10]

Product data:

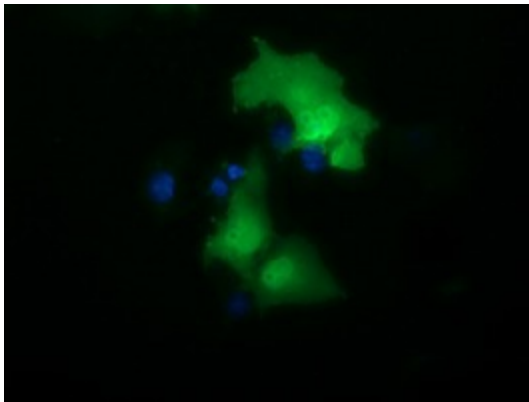
Product Type:	Primary Antibodies
Clone Name:	OTI3C10
Applications:	FC, IF, WB
Recommended Dilution:	WB 1:2000, IF 1:100, FLOW 1:100
Reactivity:	Human
Host:	Mouse
Isotype:	IgG1
Clonality:	Monoclonal
Immunogen:	Full length human recombinant protein of human NSMCE2 (NP_775956) produced in E.coli.
Formulation:	PBS (pH 7.3) containing 1% BSA, 50% glycerol.
Concentration:	0.5 mg/ml
Purification:	Purified from mouse ascites fluids or tissue culture supernatant by affinity chromatography (protein A/G)
Conjugation:	HRP
Storage:	Store at -20°C as received.
Stability:	Stable for 12 months from date of receipt.
Predicted Protein Size:	27.8 kDa
Gene Name:	NSE2 (MMS21) homolog, SMC5-SMC6 complex SUMO ligase
Database Link:	NP_775956 Entrez Gene 286053 Human Q96MF7
Synonyms:	C8orf36; MMS21; NSE2; ZMIZ7



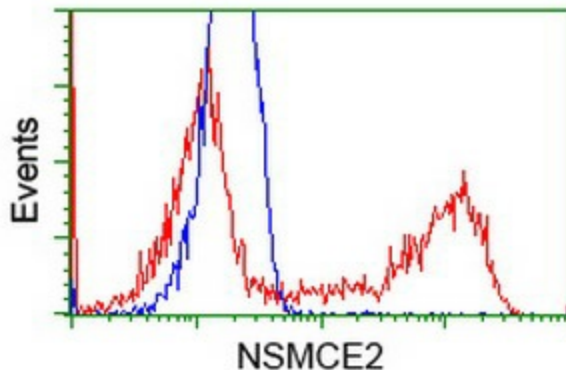
[View online »](#)

Product images:

HEK293T cells were transfected with the pCMV6-ENTRY control (Left lane) or pCMV6-ENTRY NSMCE2 ([RC207639], Right lane) cDNA for 48 hrs and lysed. Equivalent amounts of cell lysates (5 ug per lane) were separated by SDS-PAGE and immunoblotted with anti-NSMCE2. Positive lysates [LY406558] (100ug) and [LC406558] (20ug) can be purchased separately from OriGene.



Anti-NSMCE2 mouse monoclonal antibody ([TA501633]) immunofluorescent staining of COS7 cells transiently transfected by pCMV6-ENTRY NSMCE2 ([RC207639]).



HEK293T cells transfected with either [RC207639] overexpress plasmid (Red) or empty vector control plasmid (Blue) were immunostained by anti-NSMCE2 antibody ([TA501633]), and then analyzed by flow cytometry.