

Product datasheet for **TA501632**

NSE2 (NSMCE2) Mouse Monoclonal Antibody [Clone ID: OTI4A2]

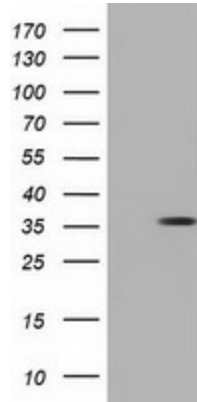
Product data:

Product Type:	Primary Antibodies
Clone Name:	OTI4A2
Applications:	FC, IF, WB
Recommended Dilution:	WB 1:500, IF 1:100, FLOW 1:100
Reactivity:	Human
Host:	Mouse
Isotype:	IgG1
Clonality:	Monoclonal
Immunogen:	Full length human recombinant protein of human NSMCE2 (NP_775956) produced in E.coli.
Formulation:	PBS (pH 7.3) containing 1% BSA, 50% glycerol and 0.02% sodium azide.
Concentration:	0.49 mg/ml
Purification:	Purified from mouse ascites fluids or tissue culture supernatant by affinity chromatography (protein A/G)
Conjugation:	Unconjugated
Storage:	Store at -20°C as received.
Stability:	Stable for 12 months from date of receipt.
Predicted Protein Size:	27.8 kDa
Gene Name:	NSE2 (MMS21) homolog, SMC5-SMC6 complex SUMO ligase
Database Link:	NP_775956 Entrez Gene 286053 Human Q96MF7
Synonyms:	C8orf36; MMS21; NSE2; ZMIZ7

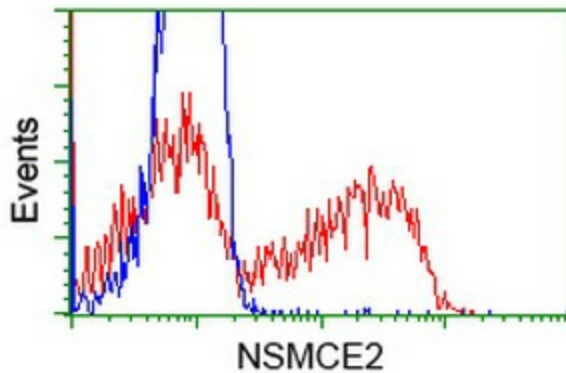


[View online »](#)

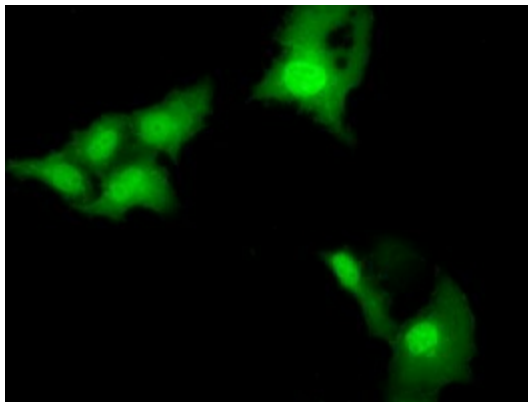
Product images:



HEK293T cells were transfected with the pCMV6-ENTRY control (Cat# [PS100001], Left lane) or pCMV6-ENTRY NSMCE2 (Cat# [RC207639], Right lane) cDNA for 48 hrs and lysed. Equivalent amounts of cell lysates (5 ug per lane) were separated by SDS-PAGE and immunoblotted with anti-NSMCE2 (Cat# TA501632). Positive lysates [LY406558] (100ug) and [LC406558] (20ug) can be purchased separately from OriGene.



HEK293T cells transfected with either [RC207639] overexpress plasmid (Red) or empty vector control plasmid (Blue) were immunostained by anti-NSMCE2 antibody (TA501632), and then analyzed by flow cytometry.



Anti-NSMCE2 mouse monoclonal antibody (TA501632) immunofluorescent staining of COS7 cells transiently transfected by pCMV6-ENTRY NSMCE2 ([RC207639]).