

## Product datasheet for **TA501628**

### EPHX2 Mouse Monoclonal Antibody [Clone ID: OTI3F6]

#### Product data:

Product Type:	Primary Antibodies
Clone Name:	OTI3F6
Applications:	FC, IF, WB
Recommended Dilution:	WB 1:2000, IF 1:100, FLOW 1:100
Reactivity:	Human
Host:	Mouse
Isotype:	IgG1
Clonality:	Monoclonal
Immunogen:	Full length human recombinant protein of human EPHX2 (NP_001970) produced in HEK293T cell.
Formulation:	PBS (pH 7.3) containing 1% BSA, 50% glycerol and 0.02% sodium azide.
Concentration:	1 mg/ml
Purification:	Purified from mouse ascites fluids or tissue culture supernatant by affinity chromatography (protein A/G)
Conjugation:	Unconjugated
Storage:	Store at -20°C as received.
Stability:	Stable for 12 months from date of receipt.
Predicted Protein Size:	62.4 kDa
Gene Name:	epoxide hydrolase 2
Database Link:	<a href="#">NP_001970</a> <a href="#">Entrez Gene 2053 Human</a> <a href="#">P34913</a>
Background:	This gene encodes a member of the epoxide hydrolase family. The protein, found in both the cytosol and peroxisomes, binds to specific epoxides and converts them to the corresponding dihydrodiols. Mutations in this gene have been associated with familial hypercholesterolemia. Alternate transcriptional splice variants of this gene have been observed but have not been thoroughly characterized. [provided by RefSeq]

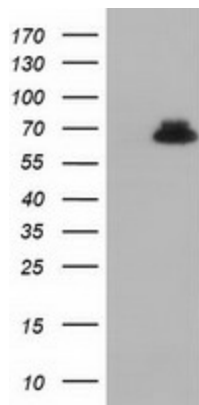


[View online »](#)

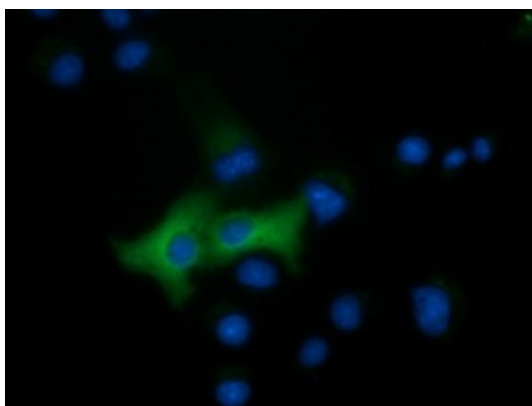
**Synonyms:** CEH; SEH

**Protein Pathways:** Arachidonic acid metabolism, Metabolic pathways

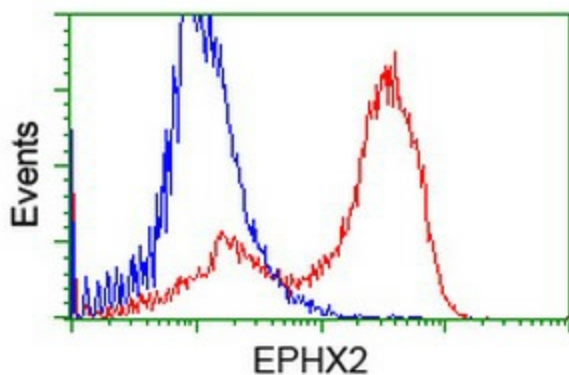
**Product images:**



HEK293T cells were transfected with the pCMV6-ENTRY control (Left lane) or pCMV6-ENTRY EPHX2 ([RC202489], Right lane) cDNA for 48 hrs and lysed. Equivalent amounts of cell lysates (5 ug per lane) were separated by SDS-PAGE and immunoblotted with anti-EPHX2. Positive lysates [LY419612] (100ug) and [LC419612] (20ug) can be purchased separately from OriGene.



Anti-EPHX2 mouse monoclonal antibody (TA501628) immunofluorescent staining of COS7 cells transiently transfected by pCMV6-ENTRY EPHX2 ([RC202489]).



HEK293T cells transfected with either [RC202489] overexpress plasmid (Red) or empty vector control plasmid (Blue) were immunostained by anti-EPHX2 antibody (TA501628), and then analyzed by flow cytometry.